

## **RPS15 Antibody (monoclonal) (M01)**

Mouse monoclonal antibody raised against a partial recombinant RPS15.

Catalog # AT3711a

### **Specification**

---

#### **RPS15 Antibody (monoclonal) (M01) - Product Information**

Application	<b>WB</b>
Primary Accession	<a href="#">P62841</a>
Other Accession	<a href="#">NM_001018</a>
Reactivity	<b>Human</b>
Host	<b>mouse</b>
Clonality	<b>Monoclonal</b>
Isotype	<b>IgG2b Kappa</b>
Calculated MW	<b>17040</b>

#### **RPS15 Antibody (monoclonal) (M01) - Additional Information**

**Gene ID** 6209

#### **Other Names**

40S ribosomal protein S15, RIG protein, RPS15, RIG

#### **Target/Specificity**

RPS15 (NP\_001009, 77 a.a. ~ 145 a.a) partial recombinant protein with GST tag. MW of the GST tag alone is 26 KDa.

#### **Dilution**

WB ~ 1:500 ~ 1000

#### **Format**

Clear, colorless solution in phosphate buffered saline, pH 7.2 .

#### **Storage**

Store at -20°C or lower. Aliquot to avoid repeated freezing and thawing.

#### **Precautions**

RPS15 Antibody (monoclonal) (M01) is for research use only and not for use in diagnostic or therapeutic procedures.

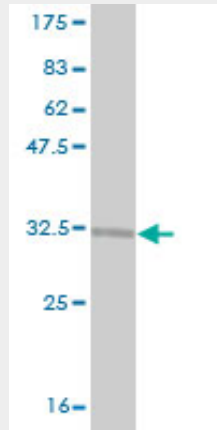
#### **RPS15 Antibody (monoclonal) (M01) - Protocols**

Provided below are standard protocols that you may find useful for product applications.

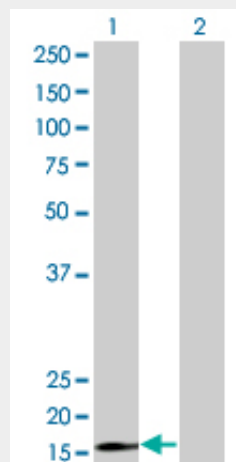
- [Western Blot](#)
- [Blocking Peptides](#)
- [Dot Blot](#)
- [Immunohistochemistry](#)

- [Immunofluorescence](#)
- [Immunoprecipitation](#)
- [Flow Cytometry](#)
- [Cell Culture](#)

### RPS15 Antibody (monoclonal) (M01) - Images



Antibody Reactive Against Recombinant Protein. Western Blot detection against Immunogen (33.33 KDa) .



Western Blot analysis of RPS15 expression in transfected 293T cell line by RPS15 monoclonal antibody (M01), clone 4H8.

Lane 1: RPS15 transfected lysate(17 KDa).  
Lane 2: Non-transfected lysate.

### RPS15 Antibody (monoclonal) (M01) - Background

Ribosomes, the organelles that catalyze protein synthesis, consist of a small 40S subunit and a large 60S subunit. Together these subunits are composed of 4 RNA species and approximately 80 structurally distinct proteins. This gene encodes a ribosomal protein that is a component of the 40S subunit. The protein belongs to the S19P family of ribosomal proteins. It is located in the cytoplasm. This gene has been found to be activated in various tumors, such as insulinomas, esophageal cancers, and colon cancers. As is typical for genes encoding ribosomal proteins, there are multiple processed pseudogenes of this gene dispersed through the genome.

**RPS15 Antibody (monoclonal) (M01) - References**

Ribosomal protein L5 and L11 mutations are associated with cleft palate and abnormal thumbs in Diamond-Blackfan anemia patients. Gazda HT, et al. Am J Hum Genet, 2008 Dec. PMID 19061985. The role of human ribosomal proteins in the maturation of rRNA and ribosome production. Robledo S, et al. RNA, 2008 Sep. PMID 18697920. Nuclear export and cytoplasmic processing of precursors to the 40S ribosomal subunits in mammalian cells. Rouquette J, et al. EMBO J, 2005 Aug 17. PMID 16037817. Mass spectrometric analysis of the human 40S ribosomal subunit: native and HCV IRES-bound complexes. Yu Y, et al. Protein Sci, 2005 Jun. PMID 15883184. The status, quality, and expansion of the NIH full-length cDNA project: the Mammalian Gene Collection (MGC). Gerhard DS, et al. Genome Res, 2004 Oct. PMID 15489334.