

RPA3 Antibody (monoclonal) (M01)

Mouse monoclonal antibody raised against a partial recombinant RPA3.

Catalog # AT3699a

Specification

RPA3 Antibody (monoclonal) (M01) - Product Information

Application	WB, IHC, E
Primary Accession	P35244
Other Accession	BC005264
Reactivity	Human
Host	mouse
Clonality	Monoclonal
Isotype	IgG1 lambda
Calculated MW	13569

RPA3 Antibody (monoclonal) (M01) - Additional Information**Gene ID** 6119**Other Names**

Replication protein A 14 kDa subunit, RP-A p14, Replication factor A protein 3, RF-A protein 3, RPA3, REPA3, RPA14

Target/Specificity

RPA3 (AAH05264, 12 a.a. ~ 121 a.a) partial recombinant protein with GST tag. MW of the GST tag alone is 26 KDa.

Dilution

WB~~1:500~1000

Format

Clear, colorless solution in phosphate buffered saline, pH 7.2 .

Storage

Store at -20°C or lower. Aliquot to avoid repeated freezing and thawing.

Precautions

RPA3 Antibody (monoclonal) (M01) is for research use only and not for use in diagnostic or therapeutic procedures.

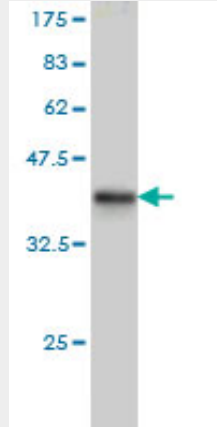
RPA3 Antibody (monoclonal) (M01) - Protocols

Provided below are standard protocols that you may find useful for product applications.

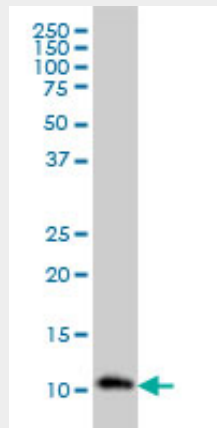
- [Western Blot](#)
- [Blocking Peptides](#)
- [Dot Blot](#)

- [Immunohistochemistry](#)
- [Immunofluorescence](#)
- [Immunoprecipitation](#)
- [Flow Cytometry](#)
- [Cell Culture](#)

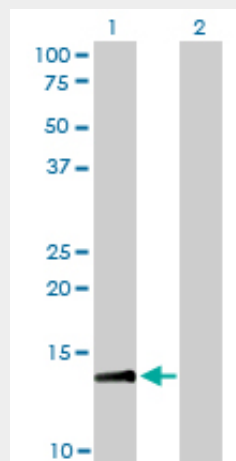
RPA3 Antibody (monoclonal) (M01) - Images



Antibody Reactive Against Recombinant Protein. Western Blot detection against Immunogen (37.73 KDa) .

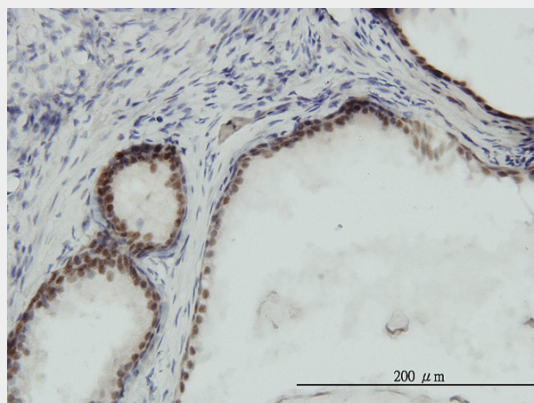


RPA3 monoclonal antibody (M01), clone 1F4 Western Blot analysis of RPA3 expression in HL-60 (Cat # AT3699a)

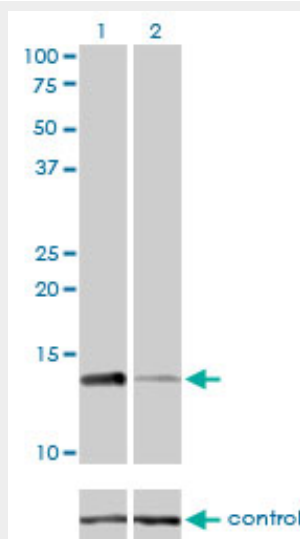


Western Blot analysis of RPA3 expression in transfected 293T cell line by RPA3 monoclonal antibody (M01), clone 1F4.

Lane 1: RPA3 transfected lysate(13.6 KDa).
 Lane 2: Non-transfected lysate.



Immunoperoxidase of monoclonal antibody to RPA3 on formalin-fixed paraffin-embedded human prostate. [antibody concentration 3 ug/ml]



Detection limit for recombinant GST tagged RPA3 is approximately 0.1ng/ml as a capture antibody.

RPA3 Antibody (monoclonal) (M01) - References

XPC genetic polymorphisms correlate with the response to imatinib treatment in patients with chronic phase chronic myeloid leukemia. Guillem VM, et al. *Am J Hematol*, 2010 Jul. PMID 20575039. Variation within DNA repair pathway genes and risk of multiple sclerosis. Briggs FB, et al. *Am J Epidemiol*, 2010 Jul 15. PMID 20522537. Comprehensive screen of genetic variation in DNA repair pathway genes and postmenopausal breast cancer risk. Monsees GM, et al. *Breast Cancer Res Treat*, 2010 May 23. PMID 20496165. Human variation in alcohol response is influenced by variation in neuronal signaling genes. Joslyn G, et al. *Alcohol Clin Exp Res*, 2010 May. PMID 20201926. Genetic polymorphisms in 85 DNA repair genes and bladder cancer risk. Michiels S, et al. *Carcinogenesis*, 2009 May. PMID 19237606.