

**RORB Antibody (monoclonal) (M08)**

Mouse monoclonal antibody raised against a partial recombinant RORB.

Catalog # AT3692a

**Specification**

---

**RORB Antibody (monoclonal) (M08) - Product Information**

Application	WB, E
Primary Accession	<a href="#">O92753</a>
Other Accession	<a href="#">NM_006914</a>
Reactivity	Human
Host	mouse
Clonality	Monoclonal
Isotype	IgG1 Lambda
Calculated MW	53220

**RORB Antibody (monoclonal) (M08) - Additional Information****Other Names**

Nuclear receptor ROR-beta, Nuclear receptor RZR-beta, Nuclear receptor subfamily 1 group F member 2, Retinoid-related orphan receptor-beta, RORB, NR1F2, RZRB

**Target/Specificity**

RORB (NP\_008845, 136 a.a. ~ 224 a.a) partial recombinant protein with GST tag. MW of the GST tag alone is 26 KDa.

**Dilution**

WB~~1:500~1000

**Format**

Clear, colorless solution in phosphate buffered saline, pH 7.2 .

**Storage**

Store at -20°C or lower. Aliquot to avoid repeated freezing and thawing.

**Precautions**

RORB Antibody (monoclonal) (M08) is for research use only and not for use in diagnostic or therapeutic procedures.

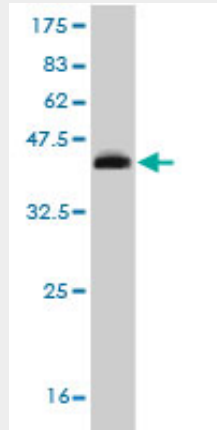
**RORB Antibody (monoclonal) (M08) - Protocols**

Provided below are standard protocols that you may find useful for product applications.

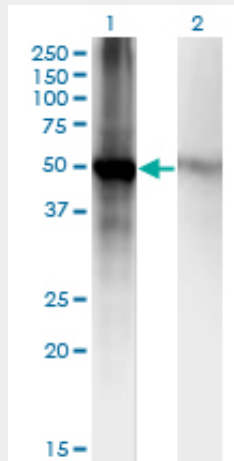
- [Western Blot](#)
- [Blocking Peptides](#)
- [Dot Blot](#)
- [Immunohistochemistry](#)
- [Immunofluorescence](#)

- [Immunoprecipitation](#)
- [Flow Cytometry](#)
- [Cell Culture](#)

**RORB Antibody (monoclonal) (M08) - Images**

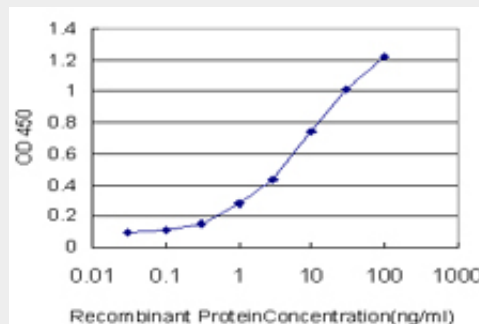


Antibody Reactive Against Recombinant Protein. Western Blot detection against Immunogen (35.53 KDa) .



Western Blot analysis of RORB expression in transfected 293T cell line by RORB monoclonal antibody (M08), clone 1E5.

Lane 1: RORB transfected lysate (Predicted MW: 52.1 KDa).  
 Lane 2: Non-transfected lysate.



Detection limit for recombinant GST tagged RORB is approximately 0.1ng/ml as a capture

antibody.

### **RORB Antibody (monoclonal) (M08) - Background**

The protein encoded by this gene is a member of the NR1 subfamily of nuclear hormone receptors. It is a DNA-binding protein that can bind as a monomer or as a homodimer to hormone response elements upstream of several genes to enhance the expression of those genes. The specific functions of this protein are not known, but it has been shown to interact with NM23-2, a nucleoside diphosphate kinase involved in organogenesis and differentiation.

### **RORB Antibody (monoclonal) (M08) - References**

Personalized smoking cessation: interactions between nicotine dose, dependence and quit-success genotype score. Rose JE, et al. *Mol Med*, 2010 Jul-Aug. PMID 20379614. Human variation in alcohol response is influenced by variation in neuronal signaling genes. Joslyn G, et al. *Alcohol Clin Exp Res*, 2010 May. PMID 20201926. Evidence for genetic association of RORB with bipolar disorder. McGrath CL, et al. *BMC Psychiatry*, 2009 Nov 12. PMID 19909500. Association study of 21 circadian genes with bipolar I disorder, schizoaffective disorder, and schizophrenia. Mansour HA, et al. *Bipolar Disord*, 2009 Nov. PMID 19839995. Automated yeast two-hybrid screening for nuclear receptor-interacting proteins. Albers M, et al. *Mol Cell Proteomics*, 2005 Feb. PMID 15604093.