

**ROBO1 Antibody (monoclonal) (M01)**

Mouse monoclonal antibody raised against a partial recombinant ROBO1.

Catalog # AT3684a

**Specification**

---

**ROBO1 Antibody (monoclonal) (M01) - Product Information**

Application	WB, E
Primary Accession	<a href="#">O9Y6N7</a>
Other Accession	<a href="#">NM_002941</a>
Reactivity	Human
Host	mouse
Clonality	Monoclonal
Isotype	IgG2a Kappa
Calculated MW	180930

**ROBO1 Antibody (monoclonal) (M01) - Additional Information****Gene ID** 6091**Other Names**

Roundabout homolog 1, Deleted in U twenty twenty, H-Robo-1, ROBO1, DUTT1

**Target/Specificity**

ROBO1 (NP\_002932, 491 a.a. ~ 589 a.a) partial recombinant protein with GST tag. MW of the GST tag alone is 26 KDa.

**Dilution**

WB~~1:500~1000

**Format**

Clear, colorless solution in phosphate buffered saline, pH 7.2 .

**Storage**

Store at -20°C or lower. Aliquot to avoid repeated freezing and thawing.

**Precautions**

ROBO1 Antibody (monoclonal) (M01) is for research use only and not for use in diagnostic or therapeutic procedures.

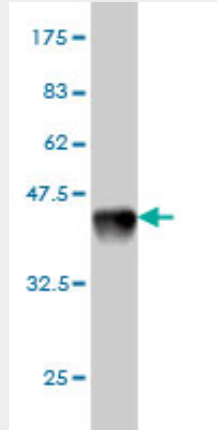
**ROBO1 Antibody (monoclonal) (M01) - Protocols**

Provided below are standard protocols that you may find useful for product applications.

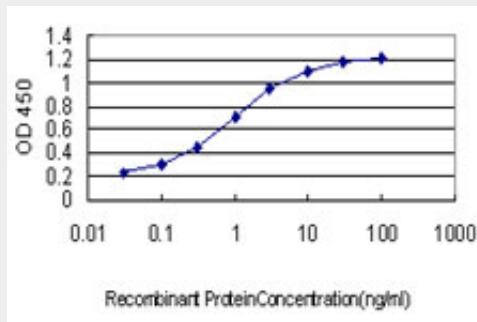
- [Western Blot](#)
- [Blocking Peptides](#)
- [Dot Blot](#)
- [Immunohistochemistry](#)

- [Immunofluorescence](#)
- [Immunoprecipitation](#)
- [Flow Cytometry](#)
- [Cell Culture](#)

### ROBO1 Antibody (monoclonal) (M01) - Images



Antibody Reactive Against Recombinant Protein. Western Blot detection against Immunogen (36.63 KDa) .



Detection limit for recombinant GST tagged ROBO1 is approximately 0.03ng/ml as a capture antibody.