

## **RNPC2 Antibody (monoclonal) (M01)**

Mouse monoclonal antibody raised against a partial recombinant RNPC2.

Catalog # AT3680a

### **Specification**

---

#### **RNPC2 Antibody (monoclonal) (M01) - Product Information**

Application	IF, WB, IHC, E
Primary Accession	<a href="#">O14498</a>
Other Accession	<a href="#">NM_184234</a>
Reactivity	Human, Mouse
Host	mouse
Clonality	Monoclonal
Isotype	IgG2a Kappa
Calculated MW	59380

#### **RNPC2 Antibody (monoclonal) (M01) - Additional Information**

**Gene ID** 9584

##### **Other Names**

RNA-binding protein 39, CAPER alpha, Hepatocellular carcinoma protein 1, RNA-binding motif protein 39, RNA-binding region-containing protein 2, Splicing factor HCC1, RBM39, HCC1, RNPC2

##### **Target/Specificity**

RNPC2 (NP\_909122, 423 a.a. ~ 472 a.a) partial recombinant protein with GST tag. MW of the GST tag alone is 26 KDa.

##### **Dilution**

WB~~1:500~1000

##### **Format**

Clear, colorless solution in phosphate buffered saline, pH 7.2 .

##### **Storage**

Store at -20°C or lower. Aliquot to avoid repeated freezing and thawing.

##### **Precautions**

RNPC2 Antibody (monoclonal) (M01) is for research use only and not for use in diagnostic or therapeutic procedures.

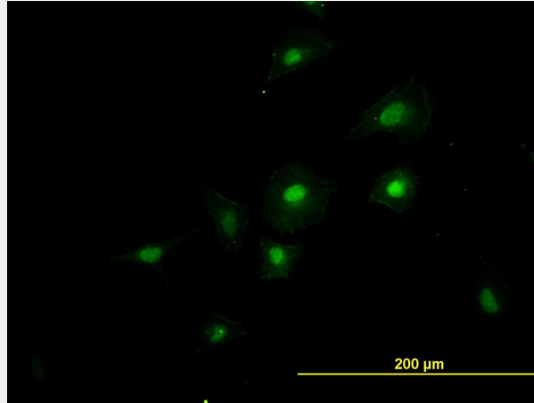
#### **RNPC2 Antibody (monoclonal) (M01) - Protocols**

Provided below are standard protocols that you may find useful for product applications.

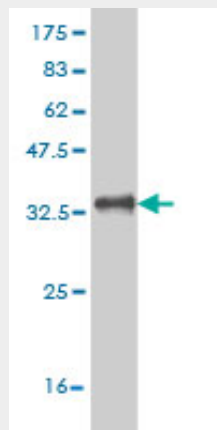
- [Western Blot](#)
- [Blocking Peptides](#)
- [Dot Blot](#)

- [Immunohistochemistry](#)
- [Immunofluorescence](#)
- [Immunoprecipitation](#)
- [Flow Cytometry](#)
- [Cell Culture](#)

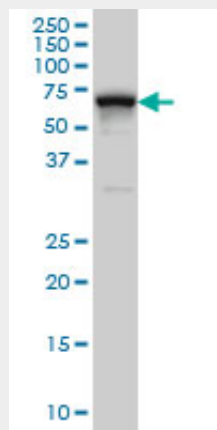
### RNPC2 Antibody (monoclonal) (M01) - Images



Immunofluorescence of monoclonal antibody to RNPC2 on HeLa cell. [antibody concentration 40 ug/ml]

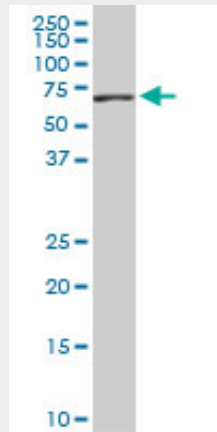


Antibody Reactive Against Recombinant Protein. Western Blot detection against Immunogen (31.24 KDa) .

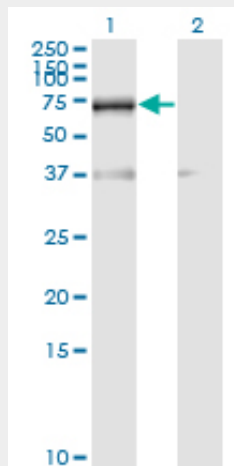


RNPC2 monoclonal antibody (M01), clone 4G8 Western Blot analysis of RNPC2 expression in HeLa

S3 NE ( (Cat # AT3680a )

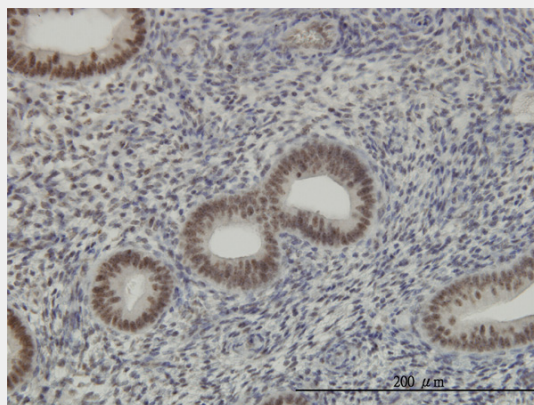


RNPC2 monoclonal antibody (M01), clone 4G8. Western Blot analysis of RNPC2 expression in NIH/3T3 ( (Cat # AT3680a )

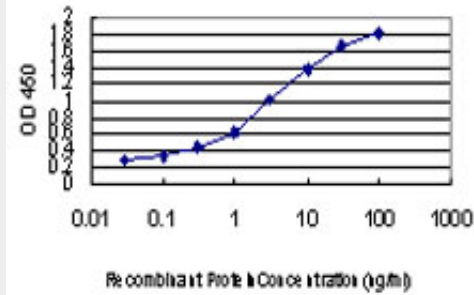


Western Blot analysis of RBM39 expression in transfected 293T cell line by RNPC2 monoclonal antibody (M01), clone 4G8.

Lane 1: RBM39 transfected lysate(58.7 KDa).  
Lane 2: Non-transfected lysate.



Immunoperoxidase of monoclonal antibody to RNPC2 on formalin-fixed paraffin-embedded human endometrium. [antibody concentration 1 ug/ml]



Detection limit for recombinant GST tagged RNPC2 is approximately 0.03ng/ml as a capture antibody.

### **RNPC2 Antibody (monoclonal) (M01) - Background**

The protein encoded by this gene is an RNA binding protein and possible splicing factor. The encoded protein is found in the nucleus, where it colocalizes with core spliceosomal proteins. Studies of a mouse protein with high sequence similarity to this protein suggest that this protein may act as a transcriptional coactivator for JUN/AP-1 and estrogen receptors. Multiple transcript variants encoding different isoforms have been observed for this gene.

### **RNPC2 Antibody (monoclonal) (M01) - References**

Genetic ablation of caveolin-1 drives estrogen-hypersensitivity and the development of DCIS-like mammary lesions. Mercier I, et al. *Am J Pathol*, 2009 Apr. PMID 19342371. CAPERalpha is a novel Rel-TAD-interacting factor that inhibits lymphocyte transformation by the potent Rel/NF-kappaB oncoprotein v-Rel. Dutta J, et al. *J Virol*, 2008 Nov. PMID 18753212. Toward a confocal subcellular atlas of the human proteome. Barbe L, et al. *Mol Cell Proteomics*, 2008 Mar. PMID 18029348. Systematic analysis of the protein interaction network for the human transcription machinery reveals the identity of the 7SK capping enzyme. Jeronimo C, et al. *Mol Cell*, 2007 Jul 20. PMID 17643375. Global, in vivo, and site-specific phosphorylation dynamics in signaling networks. Olsen JV, et al. *Cell*, 2006 Nov 3. PMID 17081983.