

**RIOK3 Antibody (monoclonal) (M02)**

Mouse monoclonal antibody raised against a partial recombinant RIOK3.

Catalog # AT3645a

**Specification**

---

**RIOK3 Antibody (monoclonal) (M02) - Product Information**

Application	WB, E
Primary Accession	<a href="#">O14730</a>
Other Accession	<a href="#">BC039729</a>
Reactivity	Human
Host	mouse
Clonality	Monoclonal
Isotype	IgG1 Kappa
Calculated MW	59093

**RIOK3 Antibody (monoclonal) (M02) - Additional Information****Gene ID** 8780**Other Names**

Serine/threonine-protein kinase RIO3, RIO kinase 3, sudD homolog, RIOK3, SUDD

**Target/Specificity**

RIOK3 (AAH39729, 411 a.a. ~ 516 a.a) partial recombinant protein with GST tag. MW of the GST tag alone is 26 KDa.

**Dilution**

WB~~1:500~1000

**Format**

Clear, colorless solution in phosphate buffered saline, pH 7.2 .

**Storage**

Store at -20°C or lower. Aliquot to avoid repeated freezing and thawing.

**Precautions**

RIOK3 Antibody (monoclonal) (M02) is for research use only and not for use in diagnostic or therapeutic procedures.

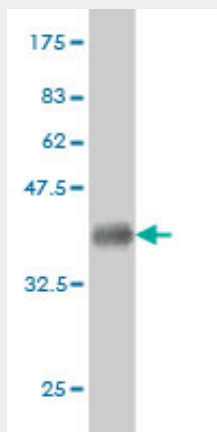
**RIOK3 Antibody (monoclonal) (M02) - Protocols**

Provided below are standard protocols that you may find useful for product applications.

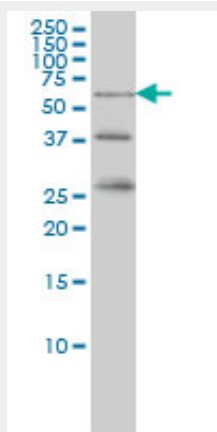
- [Western Blot](#)
- [Blocking Peptides](#)
- [Dot Blot](#)
- [Immunohistochemistry](#)

- [Immunofluorescence](#)
- [Immunoprecipitation](#)
- [Flow Cytometry](#)
- [Cell Culture](#)

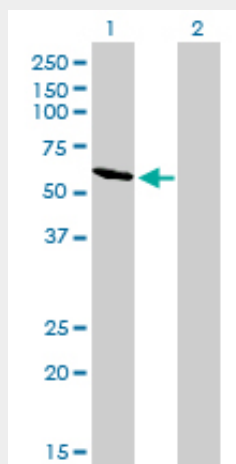
### RIOK3 Antibody (monoclonal) (M02) - Images



Antibody Reactive Against Recombinant Protein. Western Blot detection against Immunogen (37.29 KDa) .

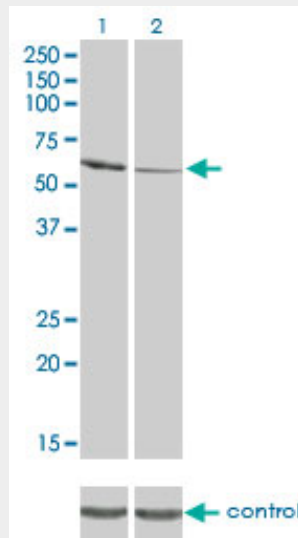


RIOK3 monoclonal antibody (M02), clone 3G11 Western Blot analysis of RIOK3 expression in K-562 ( (Cat # AT3645a )

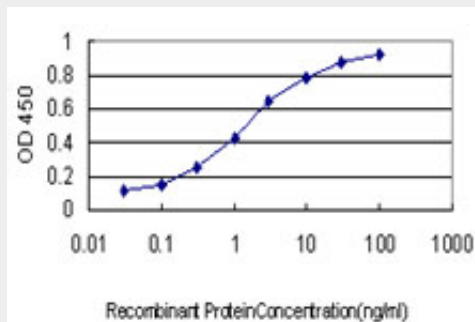


Western Blot analysis of RIOK3 expression in transfected 293T cell line by RIOK3 monoclonal antibody (M02), clone 3G11.

Lane 1: RIOK3 transfected lysate(59.1 KDa).  
Lane 2: Non-transfected lysate.



Western blot analysis of RIOK3 over-expressed 293 cell line, cotransfected with RIOK3 Validated Chimera RNAi (Cat # AT3645a)



Detection limit for recombinant GST tagged RIOK3 is approximately 0.03ng/ml as a capture antibody.

### **RIOK3 Antibody (monoclonal) (M02) - Background**

This gene was identified by the similarity of its product to the *Aspergillus nidulans* SUD protein, an extragenic suppressor of the heat-sensitive bimD6 mutation that fails to attach properly to the spindle microtubules at a restrictive temperature. The specific function of this gene has not yet been determined.

### **RIOK3 Antibody (monoclonal) (M02) - References**

Genomic alterations link Rho family of GTPases to the highly invasive phenotype of pancreas cancer. Kimmelman AC, et al. Proc Natl Acad Sci U S A, 2008 Dec 9. PMID 19050074. Toward a confocal subcellular atlas of the human proteome. Barbe L, et al. Mol Cell Proteomics, 2008 Mar. PMID 18029348. Large-scale mapping of human protein-protein interactions by mass spectrometry. Ewing RM, et al. Mol Syst Biol, 2007. PMID 17353931. Diversification of transcriptional modulation: large-scale identification and characterization of putative alternative promoters of human genes. Kimura K, et al. Genome Res, 2006 Jan. PMID 16344560. DNA sequence and analysis of human

chromosome 18. Nusbaum C, et al. Nature, 2005 Sep 22. PMID 16177791.