

RIOK3 Antibody (monoclonal) (M01)

Mouse monoclonal antibody raised against a full length recombinant RIOK3.

Catalog # AT3644a

Specification

RIOK3 Antibody (monoclonal) (M01) - Product Information

Application	IP, WB, E
Primary Accession	O14730
Other Accession	BC039729
Reactivity	Human
Host	mouse
Clonality	Monoclonal
Isotype	IgG1 kappa
Calculated MW	59093

RIOK3 Antibody (monoclonal) (M01) - Additional Information

Gene ID 8780

Other Names

Serine/threonine-protein kinase RIO3, RIO kinase 3, sudD homolog, RIOK3, SUDD

Target/Specificity

RIOK3 (AAH39729, 1 a.a. ~ 516 a.a) full-length recombinant protein with GST tag. MW of the GST tag alone is 26 KDa.

Dilution

WB~~1:500~1000

Format

Clear, colorless solution in phosphate buffered saline, pH 7.2 .

Storage

Store at -20°C or lower. Aliquot to avoid repeated freezing and thawing.

Precautions

RIOK3 Antibody (monoclonal) (M01) is for research use only and not for use in diagnostic or therapeutic procedures.

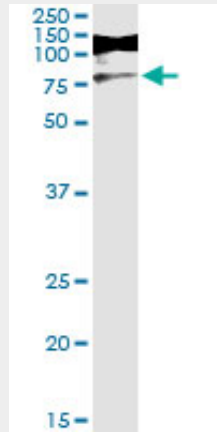
RIOK3 Antibody (monoclonal) (M01) - Protocols

Provided below are standard protocols that you may find useful for product applications.

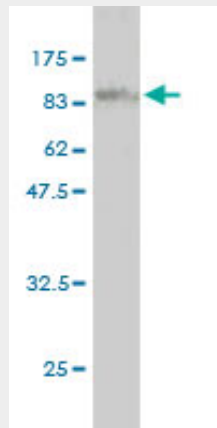
- [Western Blot](#)
- [Blocking Peptides](#)
- [Dot Blot](#)
- [Immunohistochemistry](#)

- [Immunofluorescence](#)
- [Immunoprecipitation](#)
- [Flow Cytometry](#)
- [Cell Culture](#)

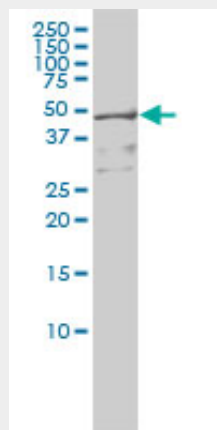
RIOK3 Antibody (monoclonal) (M01) - Images



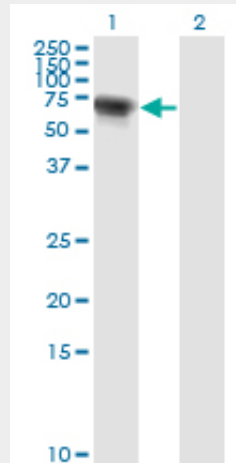
Immunoprecipitation of RIOK3 transfected lysate using anti-RIOK3 monoclonal antibody and Protein A Magnetic Bead ([U0007](#)), and immunoblotted with RIOK3 MaxPab rabbit polyclonal antibody.



Antibody Reactive Against Recombinant Protein. Western Blot detection against Immunogen (82.5 KDa) .

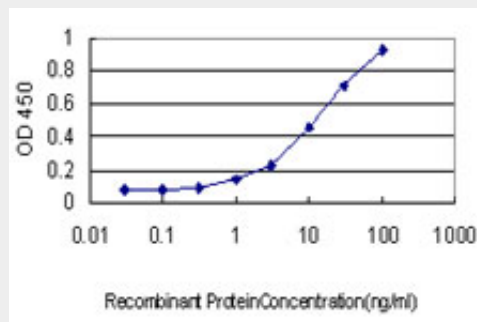


RIOK3 monoclonal antibody (M01), clone 4A12-1D2 Western Blot analysis of RIOK3 expression in Hela S3 NE ((Cat # AT3644a)



Western Blot analysis of RIOK3 expression in transfected 293T cell line by RIOK3 monoclonal antibody (M01), clone 4A12-1D2.

Lane 1: RIOK3 transfected lysate(59.1 KDa).
Lane 2: Non-transfected lysate.



Detection limit for recombinant GST tagged RIOK3 is approximately 0.3ng/ml as a capture antibody.

RIOK3 Antibody (monoclonal) (M01) - Background

This gene was identified by the similarity of its product to the *Aspergillus nidulans* Sudd protein, an extragenic suppressor of the heat-sensitive bimD6 mutation that fails to attach properly to the spindle microtubules at a restrictive temperature. The specific function of this gene has not yet been determined.

RIOK3 Antibody (monoclonal) (M01) - References

1.Genomic alterations link Rho family of GTPases to the highly invasive phenotype of pancreas cancer.Kimmelman AC, Hezel AF, Aguirre AJ, Zheng H, Paik JH, Ying H, Chu GC, Zhang JX, Sahin E, Yeo G, Ponugoti A, Nabioullin R, Deroo S, Yang S, Wang X, McGrath JP, Protopopova M, Ivanova E, Zhang J, Feng B, Tsao MS, Redston M, Protopopov A, Xiao Y, Futreal PA,Proc Natl Acad Sci U S A. 2008 Dec 9;105(49):19372-7. Epub 2008 Dec 2.