

**RHOC Antibody (monoclonal) (M01)**

Mouse monoclonal antibody raised against a full length recombinant RHOC.

Catalog # AT3636a

**Specification**

---

**RHOC Antibody (monoclonal) (M01) - Product Information**

Application	WB, E
Primary Accession	<a href="#">P08134</a>
Other Accession	<a href="#">BC007245</a>
Reactivity	Human, Mouse, Rat
Host	mouse
Clonality	Monoclonal
Isotype	IgG2b Kappa
Calculated MW	22006

**RHOC Antibody (monoclonal) (M01) - Additional Information****Gene ID** 389**Other Names**

Rho-related GTP-binding protein RhoC, Rho cDNA clone 9, h9, RHOC, ARH9, ARHC

**Target/Specificity**

RHOC (AAH07245, 1 a.a. ~ 193 a.a) full-length recombinant protein with GST tag. MW of the GST tag alone is 26 KDa.

**Dilution**

WB~~1:500~1000

**Format**

Clear, colorless solution in phosphate buffered saline, pH 7.2 .

**Storage**

Store at -20°C or lower. Aliquot to avoid repeated freezing and thawing.

**Precautions**

RHOC Antibody (monoclonal) (M01) is for research use only and not for use in diagnostic or therapeutic procedures.

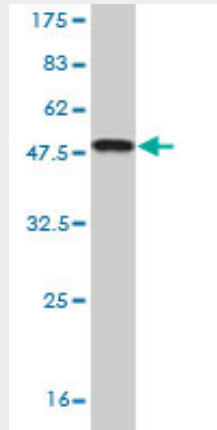
**RHOC Antibody (monoclonal) (M01) - Protocols**

Provided below are standard protocols that you may find useful for product applications.

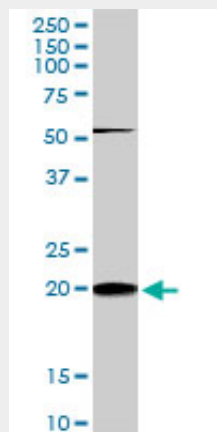
- [Western Blot](#)
- [Blocking Peptides](#)
- [Dot Blot](#)
- [Immunohistochemistry](#)

- [Immunofluorescence](#)
- [Immunoprecipitation](#)
- [Flow Cytometry](#)
- [Cell Culture](#)

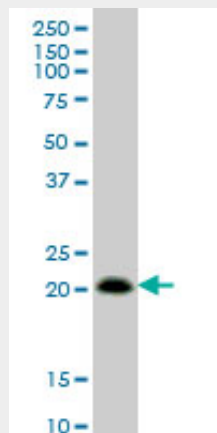
### RHOC Antibody (monoclonal) (M01) - Images



Antibody Reactive Against Recombinant Protein. Western Blot detection against Immunogen (46.97 KDa) .

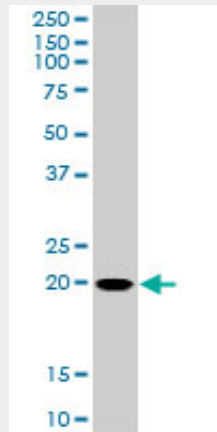


RHOC monoclonal antibody (M01), clone 2E12. Western Blot analysis of RHOC expression in PC-12 (Cat # AT3636a )

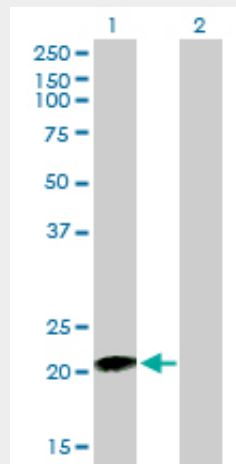


RHOC monoclonal antibody (M01), clone 2E12 Western Blot analysis of RHOC expression in Jurkat

( Cat # AT3636a )

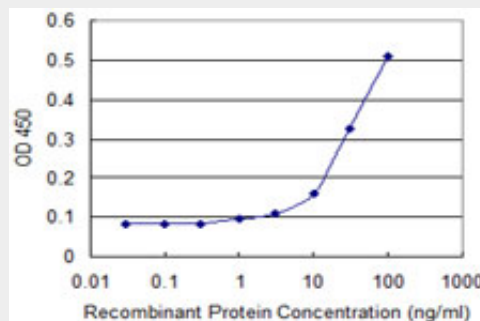


RHOC monoclonal antibody (M01), clone 2E12. Western Blot analysis of RHOC expression in NIH/3T3((Cat # AT3636a )



Western Blot analysis of RHOC expression in transfected 293T cell line by RHOC monoclonal antibody (M01), clone 2E12.

Lane 1: RHOC transfected lysate(22 KDa).  
 Lane 2: Non-transfected lysate.



Detection limit for recombinant GST tagged RHOC is approximately 3ng/ml as a capture antibody.

### **RHOC Antibody (monoclonal) (M01) - Background**

This gene encodes a member of the Rho family of small GTPases, which cycle between inactive GDP-bound and active GTP-bound states and function as molecular switches in signal transduction

cascades. Rho proteins promote reorganization of the actin cytoskeleton and regulate cell shape, attachment, and motility. The protein encoded by this gene is prenylated at its C-terminus, and localizes to the cytoplasm and plasma membrane. It is thought to be important in cell locomotion. Overexpression of this gene is associated with tumor cell proliferation and metastasis. Multiple alternatively spliced variants, encoding the same protein, have been identified.

#### **RHOC Antibody (monoclonal) (M01) - References**

1. Epidermal Growth Factor Stimulates Human Trophoblast Cell Migration through Rho A and Rho C Activation. Han J, Li L, Hu J, Yu L, Zheng Y, Guo J, Zheng X, Yi P, Zhou Y. *Endocrinology*. 2010 Feb 11. [Epub ahead of print]

#### **RHOC Antibody (monoclonal) (M01) - Citations**

- [Knockdown of RHOC by shRNA suppresses invasion and migration of cholangiocellular carcinoma cells via inhibition of MMP2, MMP3, MMP9 and epithelial-mesenchymal transition.](#)