

RGL1 Antibody (monoclonal) (M01)

Mouse monoclonal antibody raised against a partial recombinant RGL1.

Catalog # AT3626a

Specification

RGL1 Antibody (monoclonal) (M01) - Product Information

Application	WB, IHC, E
Primary Accession	O9NZL6
Other Accession	NM_015149
Reactivity	Human
Host	mouse
Clonality	Monoclonal
Isotype	IgG1 Kappa
Calculated MW	86701

RGL1 Antibody (monoclonal) (M01) - Additional Information

Gene ID 23179

Other Names

Ral guanine nucleotide dissociation stimulator-like 1, RaIGDS-like 1, RGL1, KIAA0959, RGL

Target/Specificity

RGL1 (NP_055964, 2 a.a. ~ 109 a.a) partial recombinant protein with GST tag. MW of the GST tag alone is 26 KDa.

Dilution

WB~~1:500~1000

Format

Clear, colorless solution in phosphate buffered saline, pH 7.2 .

Storage

Store at -20°C or lower. Aliquot to avoid repeated freezing and thawing.

Precautions

RGL1 Antibody (monoclonal) (M01) is for research use only and not for use in diagnostic or therapeutic procedures.

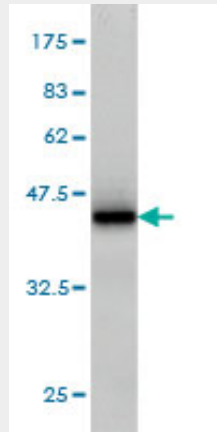
RGL1 Antibody (monoclonal) (M01) - Protocols

Provided below are standard protocols that you may find useful for product applications.

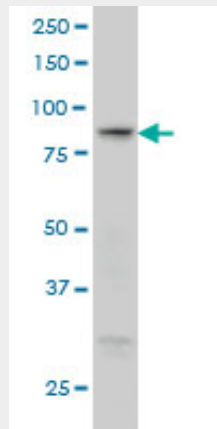
- [Western Blot](#)
- [Blocking Peptides](#)
- [Dot Blot](#)
- [Immunohistochemistry](#)

- [Immunofluorescence](#)
- [Immunoprecipitation](#)
- [Flow Cytometry](#)
- [Cell Culture](#)

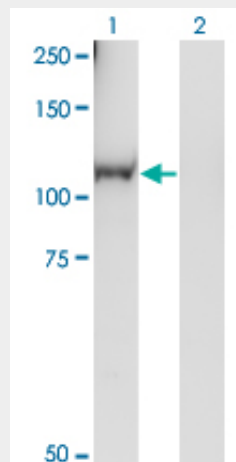
RGL1 Antibody (monoclonal) (M01) - Images



Antibody Reactive Against Recombinant Protein. Western Blot detection against Immunogen (37.62 KDa) .

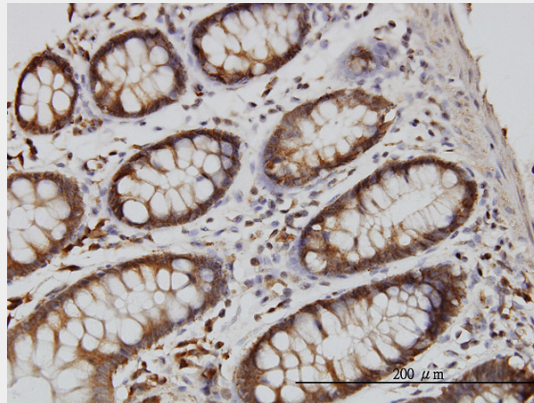


RGL1 monoclonal antibody (M01), clone 2D10 Western Blot analysis of RGL1 expression in A-431 ((Cat # AT3626a)

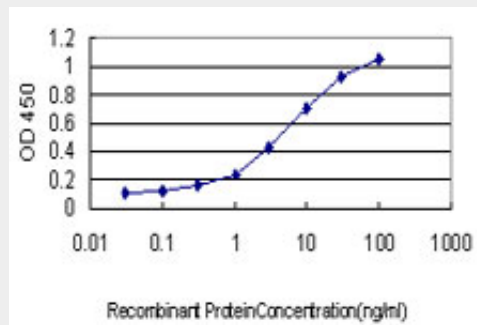


Western Blot analysis of RGL1 expression in transfected 293T cell line by RGL1 monoclonal antibody (M01), clone 2D10.

Lane 1: RGL1 transfected lysate(90.7 KDa).
Lane 2: Non-transfected lysate.



Immunoperoxidase of monoclonal antibody to RGL1 on formalin-fixed paraffin-embedded human colon. [antibody concentration 3 ug/ml]



Detection limit for recombinant GST tagged RGL1 is approximately 0.1ng/ml as a capture antibody.

RGL1 Antibody (monoclonal) (M01) - References

1.The Anti-inflammatory TIPE2 Is an Inhibitor of the Oncogenic Ras.Gus-Brautbar Y, Johnson D, Zhang L, Sun H, Wang P, Zhang S, Zhang L, Chen YH.Mol Cell. 2012 Mar 9;45(5):610-8. Epub 2012 Feb 8.