

REPS2 Antibody (monoclonal) (M01A)

Mouse monoclonal antibody raised against a partial recombinant REPS2.

Catalog # AT3618a

Specification

REPS2 Antibody (monoclonal) (M01A) - Product Information

Application	WB
Primary Accession	Q8NFH8
Other Accession	NM_004726
Reactivity	Human, Mouse
Host	Mouse
Clonality	Monoclonal
Isotype	IgM Kappa
Calculated MW	71534

REPS2 Antibody (monoclonal) (M01A) - Additional Information

Gene ID 9185

Other Names

RalBP1-associated Eps domain-containing protein 2, Partner of RalBP1, RalBP1-interacting protein 2, REPS2, POB1

Target/Specificity

REPS2 (NP_004717, 66 a.a. ~ 165 a.a) partial recombinant protein with GST tag. MW of the GST tag alone is 26 KDa.

Dilution

WB~~1:500~1000

Format

Clear, colorless solution in phosphate buffered saline, pH 7.2 .

Storage

Store at -20°C or lower. Aliquot to avoid repeated freezing and thawing.

Precautions

REPS2 Antibody (monoclonal) (M01A) is for research use only and not for use in diagnostic or therapeutic procedures.

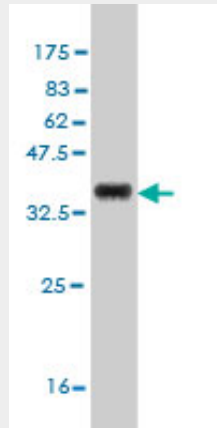
REPS2 Antibody (monoclonal) (M01A) - Protocols

Provided below are standard protocols that you may find useful for product applications.

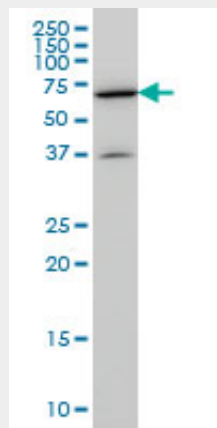
- [Western Blot](#)
- [Blocking Peptides](#)
- [Dot Blot](#)

- [Immunohistochemistry](#)
- [Immunofluorescence](#)
- [Immunoprecipitation](#)
- [Flow Cytometry](#)
- [Cell Culture](#)

REPS2 Antibody (monoclonal) (M01A) - Images



Antibody Reactive Against Recombinant Protein. Western Blot detection against Immunogen (36.74 kDa) .



REPS2 monoclonal antibody (M01A), clone 4C2 Western Blot analysis of REPS2 expression in NIH/3T3 ((Cat # AT3618a)

REPS2 Antibody (monoclonal) (M01A) - Background

The product of this gene is part of a protein complex that regulates the endocytosis of growth factor receptors. The encoded protein directly interacts with a GTPase activating protein that functions downstream of the small G protein Ral. Its expression can negatively affect receptor internalization and inhibit growth factor signaling. Multiple transcript variants encoding different isoforms have been found for this gene.

REPS2 Antibody (monoclonal) (M01A) - References

TMEM25, REPS2 and Meis 1: favourable prognostic and predictive biomarkers for breast cancer. Doolan P, et al. Tumour Biol, 2009. PMID 19776672. Hsf-1 and POB1 induce drug sensitivity and apoptosis by inhibiting Ralbp1. Singhal SS, et al. J Biol Chem, 2008 Jul 11. PMID 18474607. Toward a confocal subcellular atlas of the human proteome. Barbe L, et al. Mol Cell Proteomics, 2008 Mar.

PMID 18029348. POB1 over-expression inhibits RLIP76-mediated transport of glutathione-conjugates, drugs and promotes apoptosis. Yadav S, et al. Biochem Biophys Res Commun, 2005 Mar 25. PMID 15707977. EGF signalling in prostate cancer cell lines is inhibited by a high expression level of the endocytosis protein REPS2. Oosterhoff JK, et al. Int J Cancer, 2005 Feb 10. PMID 15455380.