

RCC1 Antibody (monoclonal) (M01)

Mouse monoclonal antibody raised against a partial recombinant RCC1.

Catalog # AT3604a

Specification

RCC1 Antibody (monoclonal) (M01) - Product Information

Application	IF, WB, IHC
Primary Accession	P18754
Other Accession	BC007300
Reactivity	Human
Host	mouse
Clonality	Monoclonal
Isotype	IgG1 Kappa
Calculated MW	44969

RCC1 Antibody (monoclonal) (M01) - Additional Information

Gene ID 1104

Other Names

Regulator of chromosome condensation, Cell cycle regulatory protein, Chromosome condensation protein 1, RCC1, CHC1

Target/Specificity

RCC1 (AAH07300, 312 a.a. ~ 421 a.a) partial recombinant protein with GST tag. MW of the GST tag alone is 26 KDa.

Dilution

WB~~1:500~1000

Format

Clear, colorless solution in phosphate buffered saline, pH 7.2 .

Storage

Store at -20°C or lower. Aliquot to avoid repeated freezing and thawing.

Precautions

RCC1 Antibody (monoclonal) (M01) is for research use only and not for use in diagnostic or therapeutic procedures.

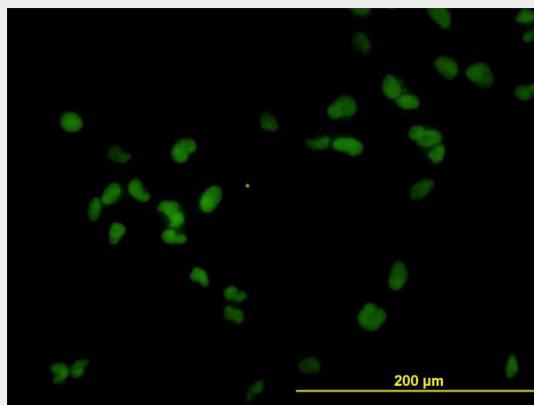
RCC1 Antibody (monoclonal) (M01) - Protocols

Provided below are standard protocols that you may find useful for product applications.

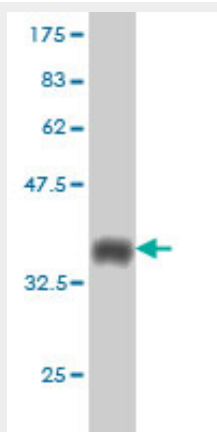
- [Western Blot](#)
- [Blocking Peptides](#)
- [Dot Blot](#)

- [Immunohistochemistry](#)
- [Immunofluorescence](#)
- [Immunoprecipitation](#)
- [Flow Cytometry](#)
- [Cell Culture](#)

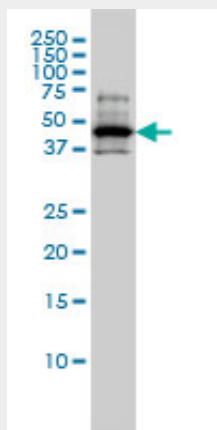
RCC1 Antibody (monoclonal) (M01) - Images



Immunofluorescence of monoclonal antibody to RCC1 on HeLa cell. [antibody concentration 10 ug/ml]

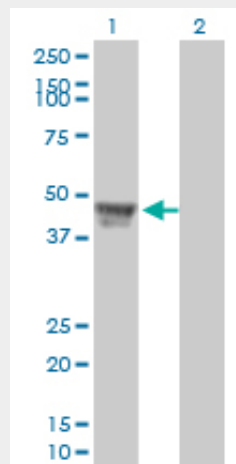


Antibody Reactive Against Recombinant Protein. Western Blot detection against Immunogen (37.73 KDa) .



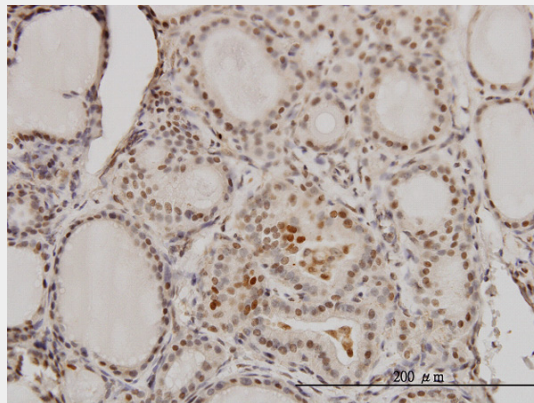
RCC1 monoclonal antibody (M01), clone 2F1 Western Blot analysis of RCC1 expression in A-431 (

(Cat # AT3604a)



Western Blot analysis of RCC1 expression in transfected 293T cell line by RCC1 monoclonal antibody (M01), clone 2F1.

Lane 1: RCC1 transfected lysate(45 KDa).
Lane 2: Non-transfected lysate.



Immunoperoxidase of monoclonal antibody to RCC1 on formalin-fixed paraffin-embedded human thyroid nodular goiter. [antibody concentration 3 ug/ml]