

RBM5 Antibody (monoclonal) (M01)

Mouse monoclonal antibody raised against a partial recombinant RBM5.

Catalog # AT3592a

Specification

RBM5 Antibody (monoclonal) (M01) - Product Information

Application	IF, WB, IHC
Primary Accession	P52756
Other Accession	BC002957
Reactivity	Human
Host	mouse
Clonality	Monoclonal
Isotype	IgG2a Kappa
Calculated MW	92154

RBM5 Antibody (monoclonal) (M01) - Additional Information

Gene ID 10181

Other Names

RNA-binding protein 5, Protein G15, Putative tumor suppressor LUCA15, RNA-binding motif protein 5, Renal carcinoma antigen NY-REN-9, RBM5

Target/Specificity

RBM5 (AAH02957, 75 a.a. ~ 184 a.a) partial recombinant protein with GST tag. MW of the GST tag alone is 26 KDa.

Dilution

WB~~1:500~1000

Format

Clear, colorless solution in phosphate buffered saline, pH 7.2 .

Storage

Store at -20°C or lower. Aliquot to avoid repeated freezing and thawing.

Precautions

RBM5 Antibody (monoclonal) (M01) is for research use only and not for use in diagnostic or therapeutic procedures.

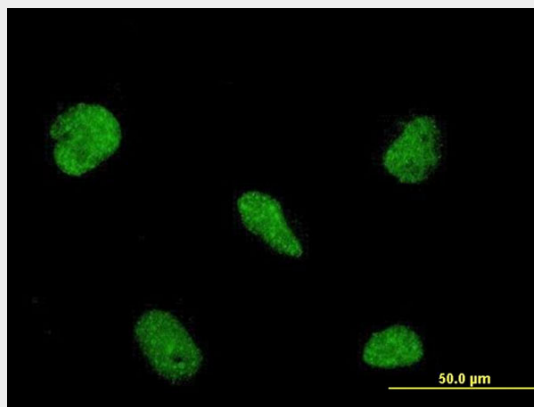
RBM5 Antibody (monoclonal) (M01) - Protocols

Provided below are standard protocols that you may find useful for product applications.

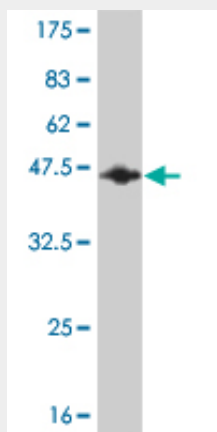
- [Western Blot](#)
- [Blocking Peptides](#)
- [Dot Blot](#)

- [Immunohistochemistry](#)
- [Immunofluorescence](#)
- [Immunoprecipitation](#)
- [Flow Cytometry](#)
- [Cell Culture](#)

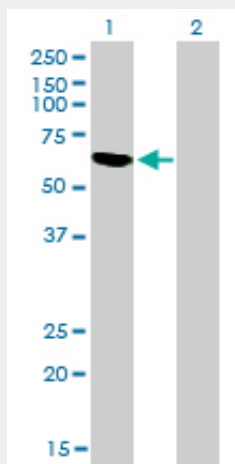
RBM5 Antibody (monoclonal) (M01) - Images



Immunofluorescence of monoclonal antibody to RBM5 on HeLa cell . [antibody concentration 10 ug/ml]

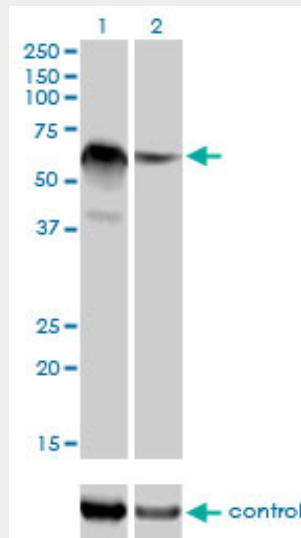


Antibody Reactive Against Recombinant Protein. Western Blot detection against Immunogen (37.73 KDa) .

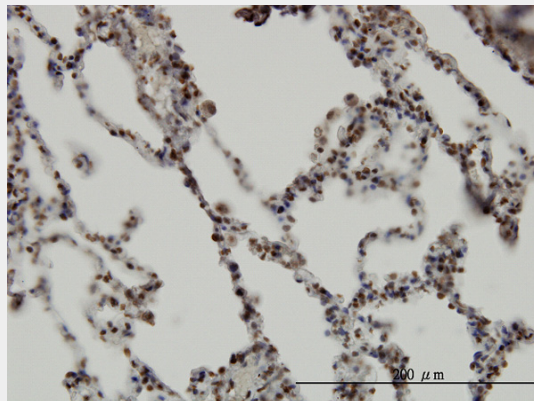


Western Blot analysis of RBM5 expression in transfected 293T cell line by RBM5 monoclonal antibody (M01), clone 2B6.

Lane 1: RBM5 transfected lysate(61.5 KDa).
Lane 2: Non-transfected lysate.



Western blot analysis of RBM5 over-expressed 293 cell line, cotransfected with RBM5 Validated Chimera RNAi (Cat # AT3592a)



Immunoperoxidase of monoclonal antibody to RBM5 on formalin-fixed paraffin-embedded human lung. [antibody concentration 3 ug/ml]