

RASSF8 Antibody (monoclonal) (M01)

Mouse monoclonal antibody raised against a partial recombinant RASSF8.

Catalog # AT3583a

Specification

RASSF8 Antibody (monoclonal) (M01) - Product Information

Application	IF, IP, WB, IHC, E
Primary Accession	O8NHQ8
Other Accession	NM_007211
Reactivity	Human, Mouse
Host	mouse
Clonality	Monoclonal
Isotype	IgG2a Kappa
Calculated MW	48327

RASSF8 Antibody (monoclonal) (M01) - Additional Information

Gene ID 11228

Other Names

Ras association domain-containing protein 8, Carcinoma-associated protein HOJ-1, RASSF8, C12orf2

Target/Specificity

RASSF8 (NP_009142, 40 a.a. ~ 137 a.a) partial recombinant protein with GST tag. MW of the GST tag alone is 26 KDa.

Dilution

WB~~1:500~1000

Format

Clear, colorless solution in phosphate buffered saline, pH 7.2 .

Storage

Store at -20°C or lower. Aliquot to avoid repeated freezing and thawing.

Precautions

RASSF8 Antibody (monoclonal) (M01) is for research use only and not for use in diagnostic or therapeutic procedures.

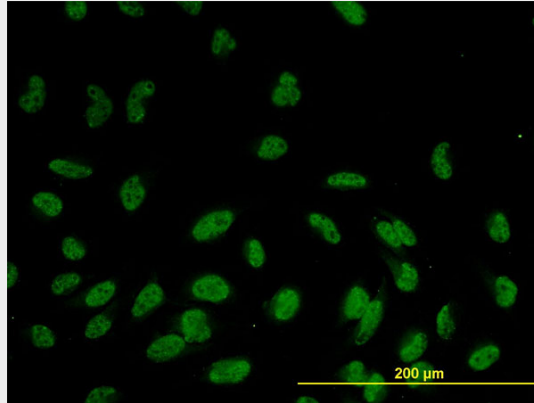
RASSF8 Antibody (monoclonal) (M01) - Protocols

Provided below are standard protocols that you may find useful for product applications.

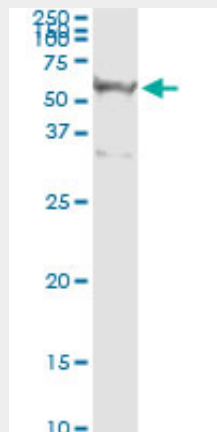
- [Western Blot](#)
- [Blocking Peptides](#)
- [Dot Blot](#)

- [Immunohistochemistry](#)
- [Immunofluorescence](#)
- [Immunoprecipitation](#)
- [Flow Cytometry](#)
- [Cell Culture](#)

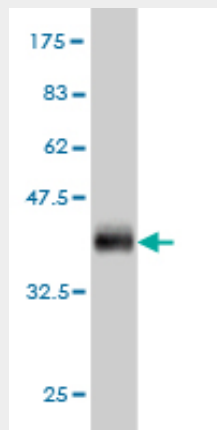
RASSF8 Antibody (monoclonal) (M01) - Images



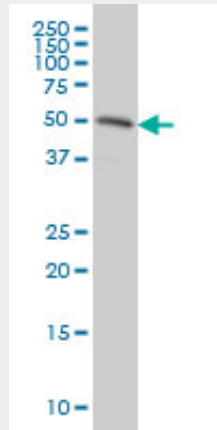
Immunofluorescence of monoclonal antibody to RASSF8 on HeLa cell. [antibody concentration 10 ug/ml]



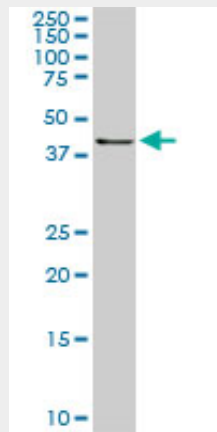
Immunoprecipitation of RASSF8 transfected lysate using anti-RASSF8 monoclonal antibody and Protein A Magnetic Bead ([U0007](#)), and immunoblotted with RASSF8 MaxPab rabbit polyclonal antibody.



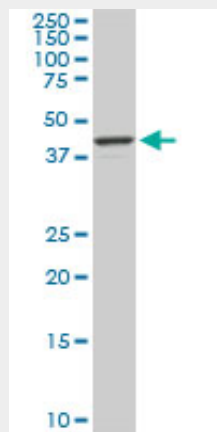
Antibody Reactive Against Recombinant Protein. Western Blot detection against Immunogen (36.52 KDa) .



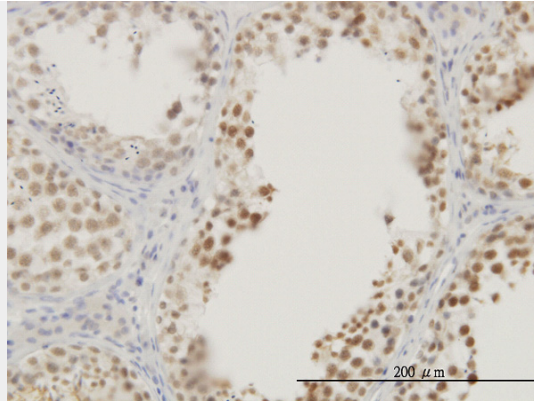
RASSF8 monoclonal antibody (M01), clone 2G1 Western Blot analysis of RASSF8 expression in HeLa ((Cat # AT3583a)



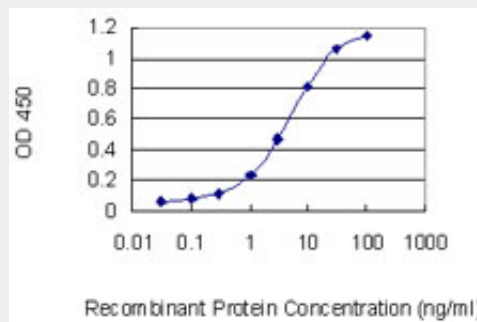
RASSF8 monoclonal antibody (M01), clone 2G1. Western Blot analysis of RASSF8 expression in PC-12((Cat # AT3583a)



RASSF8 monoclonal antibody (M01), clone 2G1. Western Blot analysis of RASSF8 expression in NIH/3T3((Cat # AT3583a)



Immunoperoxidase of monoclonal antibody to RASSF8 on formalin-fixed paraffin-embedded human testis. [antibody concentration 3 ug/ml]



Detection limit for recombinant GST tagged RASSF8 is 0.1 ng/ml as a capture antibody.

RASSF8 Antibody (monoclonal) (M01) - References

The RASSF8 candidate tumor suppressor inhibits cell growth and regulates the Wnt and NF-kappaB signaling pathways. Lock FE, et al. *Oncogene*, 2010 Jul 29. PMID 20514026. Personalized smoking cessation: interactions between nicotine dose, dependence and quit-success genotype score. Rose JE, et al. *Mol Med*, 2010 Jul-Aug. PMID 20379614. Common polymorphisms in D12S1034 flanking genes RASSF8 and BHLHB3 are not associated with lung adenocarcinoma risk. Falvella FS, et al. *Lung Cancer*, 2007 Apr. PMID 17194498. Identification of RASSF8 as a candidate lung tumor suppressor gene. Falvella FS, et al. *Oncogene*, 2006 Jun 29. PMID 16462760. Diversification of transcriptional modulation: large-scale identification and characterization of putative alternative promoters of human genes. Kimura K, et al. *Genome Res*, 2006 Jan. PMID 16344560.