

## **RASL11B Antibody (monoclonal) (M01)**

Mouse monoclonal antibody raised against a full length recombinant RASL11B.

Catalog # AT3582a

### **Specification**

---

#### **RASL11B Antibody (monoclonal) (M01) - Product Information**

Application	WB, E
Primary Accession	<a href="#">O9BPW5</a>
Other Accession	<a href="#">BC025694</a>
Reactivity	Human
Host	mouse
Clonality	Monoclonal
Isotype	IgG1 kappa
Calculated MW	27508

#### **RASL11B Antibody (monoclonal) (M01) - Additional Information**

**Gene ID** 65997

##### **Other Names**

Ras-like protein family member 11B, RASL11B {ECO:0000312|EMBL:AAH018461}

##### **Target/Specificity**

RASL11B (AAH25694, 1 a.a. ~ 248 a.a) full-length recombinant protein with GST tag. MW of the GST tag alone is 26 KDa.

##### **Dilution**

WB~~1:500~1000

##### **Format**

Clear, colorless solution in phosphate buffered saline, pH 7.2 .

##### **Storage**

Store at -20°C or lower. Aliquot to avoid repeated freezing and thawing.

##### **Precautions**

RASL11B Antibody (monoclonal) (M01) is for research use only and not for use in diagnostic or therapeutic procedures.

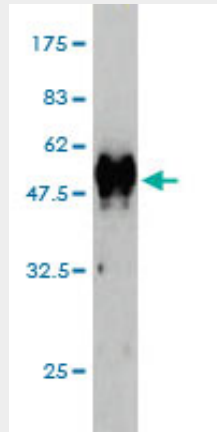
#### **RASL11B Antibody (monoclonal) (M01) - Protocols**

Provided below are standard protocols that you may find useful for product applications.

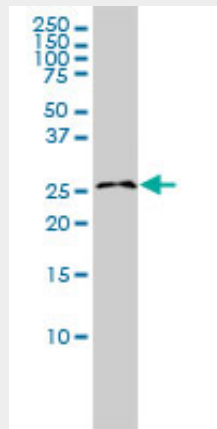
- [Western Blot](#)
- [Blocking Peptides](#)
- [Dot Blot](#)
- [Immunohistochemistry](#)

- [Immunofluorescence](#)
- [Immunoprecipitation](#)
- [Flow Cytometry](#)
- [Cell Culture](#)

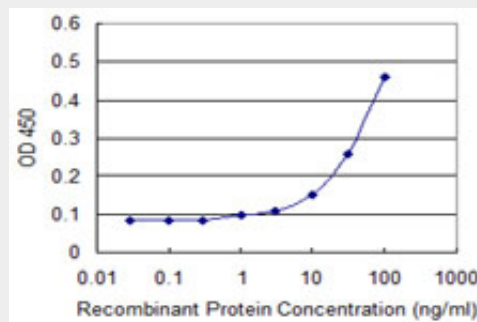
### RASL11B Antibody (monoclonal) (M01) - Images



Antibody Reactive Against Recombinant Protein. Western Blot detection against Immunogen (53.02 KDa) .



RASL11B monoclonal antibody (M01), clone 1B5 Western Blot analysis of RASL11B expression in K-562 ( (Cat # AT3582a )



Detection limit for recombinant GST tagged RASL11B is approximately 3ng/ml as a capture antibody.

### RASL11B Antibody (monoclonal) (M01) - Background

RASL11B is a member of the small GTPase protein family with a high degree of similarity to RAS (see HRAS, MIM 190020) proteins.

#### **RASL11B Antibody (monoclonal) (M01) - References**

Cloning, genomic organization, and tissue-specific expression of the RASL11B gene. Stolle K, et al. *Biochim Biophys Acta*, 2007 Jul-Aug. PMID 17628721. Towards a proteome-scale map of the human protein-protein interaction network. Rual JF, et al. *Nature*, 2005 Oct 20. PMID 16189514. RASL11A, member of a novel small monomeric GTPase gene family, is down-regulated in prostate tumors. Louro R, et al. *Biochem Biophys Res Commun*, 2004 Apr 9. PMID 15033445. Complete sequencing and characterization of 21,243 full-length human cDNAs. Ota T, et al. *Nat Genet*, 2004 Jan. PMID 14702039. Generation and initial analysis of more than 15,000 full-length human and mouse cDNA sequences. Strausberg RL, et al. *Proc Natl Acad Sci U S A*, 2002 Dec 24. PMID 12477932.