

## **RANBP5 Antibody (monoclonal) (M01)**

Mouse monoclonal antibody raised against a partial recombinant RANBP5.

Catalog # AT3561a

### **Specification**

---

#### **RANBP5 Antibody (monoclonal) (M01) - Product Information**

Application	WB, IHC, E
Primary Accession	<a href="#">O00410</a>
Other Accession	<a href="#">BC001497</a>
Reactivity	Human, Mouse, Rat
Host	mouse
Clonality	Monoclonal
Isotype	IgG1 Kappa
Calculated MW	123630

#### **RANBP5 Antibody (monoclonal) (M01) - Additional Information**

**Gene ID** 3843

##### **Other Names**

Importin-5, Imp5, Importin subunit beta-3, Karyopherin beta-3, Ran-binding protein 5, RanBP5, IPO5, KPNB3, RANBP5

##### **Target/Specificity**

RANBP5 (AAH01497, 1 a.a. ~ 100 a.a) partial recombinant protein with GST tag. MW of the GST tag alone is 26 KDa.

##### **Dilution**

WB~~1:500~1000

##### **Format**

Clear, colorless solution in phosphate buffered saline, pH 7.2 .

##### **Storage**

Store at -20°C or lower. Aliquot to avoid repeated freezing and thawing.

##### **Precautions**

RANBP5 Antibody (monoclonal) (M01) is for research use only and not for use in diagnostic or therapeutic procedures.

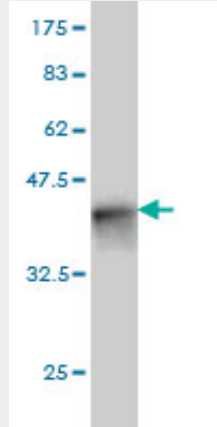
#### **RANBP5 Antibody (monoclonal) (M01) - Protocols**

Provided below are standard protocols that you may find useful for product applications.

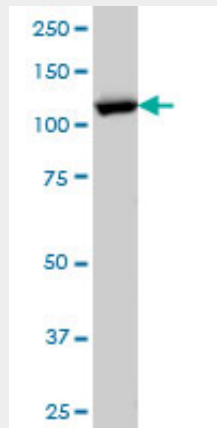
- [Western Blot](#)
- [Blocking Peptides](#)
- [Dot Blot](#)

- [Immunohistochemistry](#)
- [Immunofluorescence](#)
- [Immunoprecipitation](#)
- [Flow Cytometry](#)
- [Cell Culture](#)

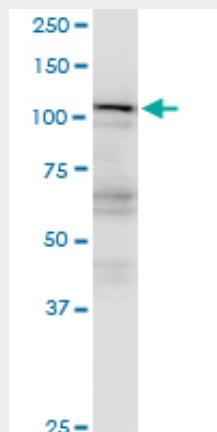
### RANBP5 Antibody (monoclonal) (M01) - Images



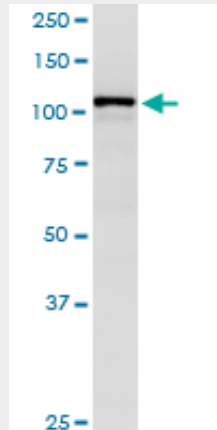
Antibody Reactive Against Recombinant Protein. Western Blot detection against Immunogen (36.74 KDa) .



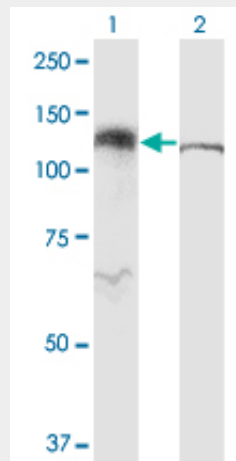
RANBP5 monoclonal antibody (M01), clone 1C4 Western Blot analysis of RANBP5 expression in HeLa ( (Cat # AT3561a )



RANBP5 monoclonal antibody (M01), clone 1C4. Western Blot analysis of IPO5 expression in PC-12.

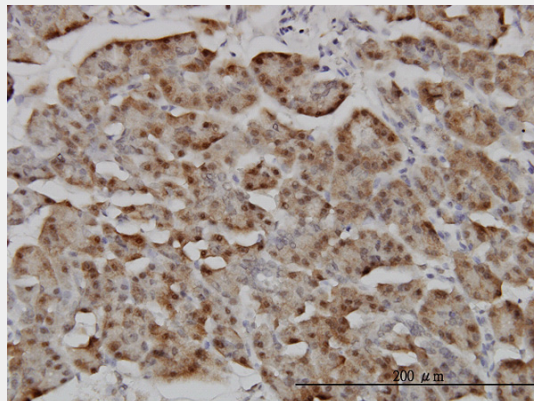


RANBP5 monoclonal antibody (M01), clone 1C4. Western Blot analysis of IPO5 expression in Raw 264.7.

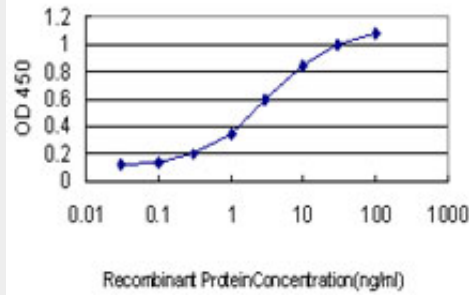


Western Blot analysis of IPO5 expression in transfected 293T cell line by RANBP5 monoclonal antibody (M01), clone 1C4.

Lane 1: IPO5 transfected lysate (Predicted MW: 125.6 kDa).  
Lane 2: Non-transfected lysate.



Immunoperoxidase of monoclonal antibody to RANBP5 on formalin-fixed paraffin-embedded human pancreas. [antibody concentration 3 ug/ml]



Detection limit for recombinant GST tagged RANBP5 is approximately 0.03ng/ml as a capture antibody.

### **RANBP5 Antibody (monoclonal) (M01) - Background**

Nucleocytoplasmic transport, a signal- and energy-dependent process, takes place through nuclear pore complexes embedded in the nuclear envelope. The import of proteins containing a nuclear localization signal (NLS) requires the NLS import receptor, a heterodimer of importin alpha and beta subunits also known as karyopherins. Importin alpha binds the NLS-containing cargo in the cytoplasm and importin beta docks the complex at the cytoplasmic side of the nuclear pore complex. In the presence of nucleoside triphosphates and the small GTP binding protein Ran, the complex moves into the nuclear pore complex and the importin subunits dissociate. Importin alpha enters the nucleoplasm with its passenger protein and importin beta remains at the pore. Interactions between importin beta and the FG repeats of nucleoporins are essential in translocation through the pore complex. The protein encoded by this gene is a member of the importin beta family.

### **RANBP5 Antibody (monoclonal) (M01) - References**

1. Localization of retinitis pigmentosa 2 to cilia is regulated by Importin {beta} 2. Hurd TW, Fan S, Margolis BL. *J Cell Sci.* 2011 Mar 1;124(Pt 5):718-26. Epub 2011 Feb 1.