

RALB Antibody (monoclonal) (M04)

Mouse monoclonal antibody raised against a partial recombinant RALB.

Catalog # AT3553a

Specification

RALB Antibody (monoclonal) (M04) - Product Information

Application	IP, WB, IHC, E
Primary Accession	P11234
Other Accession	BC018163
Reactivity	Human
Host	mouse
Clonality	Monoclonal
Isotype	IgG2a Kappa
Calculated MW	23409

RALB Antibody (monoclonal) (M04) - Additional Information**Gene ID** 5899**Other Names**

Ras-related protein Ral-B, RALB

Target/Specificity

RALB (AAH18163, 89 a.a. ~ 183 a.a) partial recombinant protein with GST tag. MW of the GST tag alone is 26 KDa.

Dilution

WB~~1:500~1000

Format

Clear, colorless solution in phosphate buffered saline, pH 7.2 .

Storage

Store at -20°C or lower. Aliquot to avoid repeated freezing and thawing.

Precautions

RALB Antibody (monoclonal) (M04) is for research use only and not for use in diagnostic or therapeutic procedures.

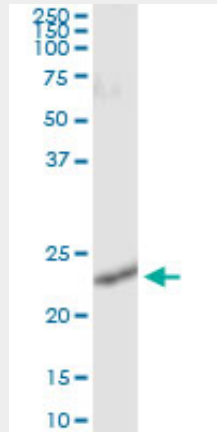
RALB Antibody (monoclonal) (M04) - Protocols

Provided below are standard protocols that you may find useful for product applications.

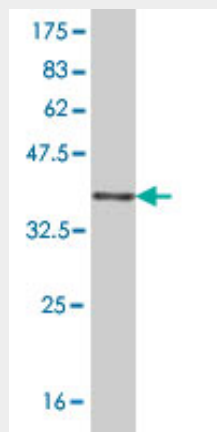
- [Western Blot](#)
- [Blocking Peptides](#)
- [Dot Blot](#)
- [Immunohistochemistry](#)

- [Immunofluorescence](#)
- [Immunoprecipitation](#)
- [Flow Cytometry](#)
- [Cell Culture](#)

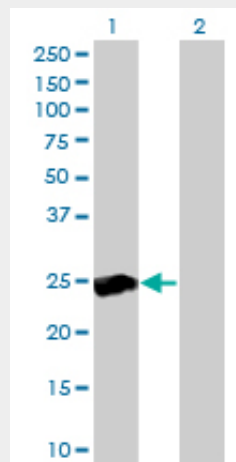
RALB Antibody (monoclonal) (M04) - Images



Immunoprecipitation of RALB transfected lysate using anti-RALB monoclonal antibody and Protein A Magnetic Bead ([U0007](#)), and immunoblotted with RALB MaxPab rabbit polyclonal antibody.

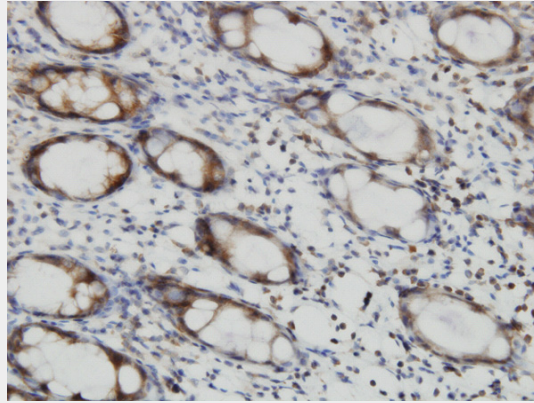


Antibody Reactive Against Recombinant Protein. Western Blot detection against Immunogen (36.08 KDa) .

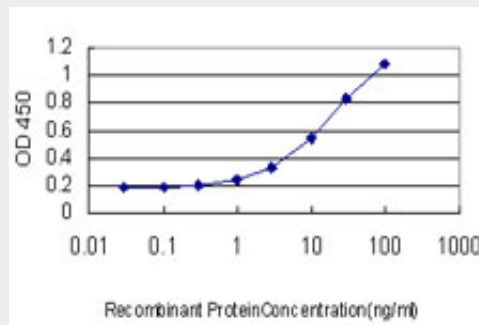


Western Blot analysis of RALB expression in transfected 293T cell line by RALB monoclonal antibody (M04), clone 4D1.

Lane 1: RALB transfected lysate(23.4 KDa).
Lane 2: Non-transfected lysate.



Immunoperoxidase of monoclonal antibody to RALB on formalin-fixed paraffin-embedded human colon. [antibody concentration 3 ug/ml]



Detection limit for recombinant GST tagged RALB is approximately 0.3ng/ml as a capture antibody.

RALB Antibody (monoclonal) (M04) - Background

This gene encodes a GTP-binding protein that belongs to the small GTPase superfamily and Ras family of proteins. GTP-binding proteins mediate the transmembrane signaling initiated by the occupancy of certain cell surface receptors.

RALB Antibody (monoclonal) (M04) - References

1.The mycobacterium bovis BCG phagosome proteome.Lee BY, Jethwaney D, Schilling B, Clemens DL, Gibson BW, Horwitz MA.Mol Cell Proteomics. 2009 Oct 7. [Epub ahead of print]