

## **RAB8A Antibody (monoclonal) (M02)**

Mouse monoclonal antibody raised against a partial recombinant RAB8A.

Catalog # AT3535a

### **Specification**

---

#### **RAB8A Antibody (monoclonal) (M02) - Product Information**

Application	WB, E
Primary Accession	<a href="#">P61006</a>
Other Accession	<a href="#">BC002977</a>
Reactivity	Human
Host	mouse
Clonality	Monoclonal
Isotype	IgG1 Kappa
Calculated MW	23668

#### **RAB8A Antibody (monoclonal) (M02) - Additional Information**

**Gene ID** 4218

##### **Other Names**

Ras-related protein Rab-8A, Oncogene c-mel, RAB8A, MEL, RAB8

##### **Target/Specificity**

RAB8A (AAH02977, 108 a.a. ~ 207 a.a) partial recombinant protein with GST tag. MW of the GST tag alone is 26 KDa.

##### **Dilution**

WB~~1:500~1000

##### **Format**

Clear, colorless solution in phosphate buffered saline, pH 7.2 .

##### **Storage**

Store at -20°C or lower. Aliquot to avoid repeated freezing and thawing.

##### **Precautions**

RAB8A Antibody (monoclonal) (M02) is for research use only and not for use in diagnostic or therapeutic procedures.

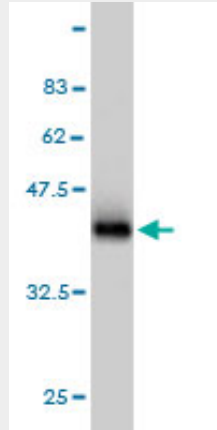
#### **RAB8A Antibody (monoclonal) (M02) - Protocols**

Provided below are standard protocols that you may find useful for product applications.

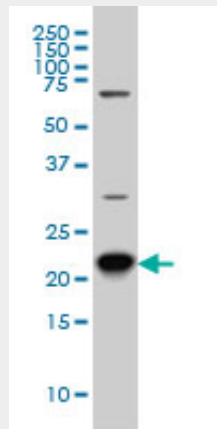
- [Western Blot](#)
- [Blocking Peptides](#)
- [Dot Blot](#)
- [Immunohistochemistry](#)

- [Immunofluorescence](#)
- [Immunoprecipitation](#)
- [Flow Cytometry](#)
- [Cell Culture](#)

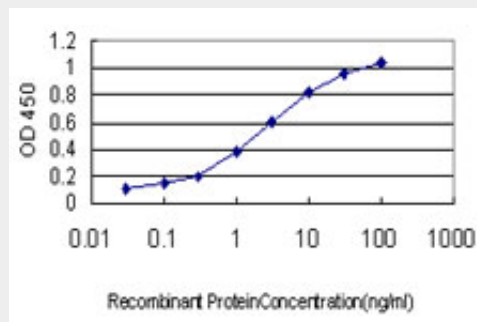
**RAB8A Antibody (monoclonal) (M02) - Images**



Antibody Reactive Against Recombinant Protein. Western Blot detection against Immunogen (36.63 KDa) .



RAB8A monoclonal antibody (M02), clone 3G1 Western Blot analysis of RAB8A expression in Hela S3 NE ( (Cat # AT3535a )



Detection limit for recombinant GST tagged RAB8A is approximately 0.1ng/ml as a capture antibody.

**RAB8A Antibody (monoclonal) (M02) - Background**

The protein encoded by this gene is a member of the RAS superfamily which are small GTP/GDP-binding proteins with an average size of 200 amino acids. The RAS-related proteins of the RAB/YPT family may play a role in the transport of proteins from the endoplasmic reticulum to the Golgi and the plasma membrane. This protein shares 97%, 96%, and 51% similarity with the dog RAB8, mouse MEL, and mouse YPT1 proteins, respectively and contains the 4 GTP/GDP-binding sites that are present in all the RAS proteins. The putative effector-binding site of this protein is similar to that of the RAB/YPT proteins. However, this protein contains a C-terminal CAAX motif that is characteristic of many RAS superfamily members but which is not found in YPT1 and the majority of RAB proteins. Although this gene was isolated as a transforming gene from a melanoma cell line, no linkage between MEL and malignant melanoma has been demonstrable. This oncogene is located 800 kb distal to MY09B on chromosome 19p13.1.

### **RAB8A Antibody (monoclonal) (M02) - References**

Rab8 interacts with distinct motifs in alpha2B- and beta2-adrenergic receptors and differentially modulates their transport. Dong C, et al. J Biol Chem, 2010 Jun 25. PMID 20424170. Coordination of Rab8 and Rab11 in primary ciliogenesis. Kn?dler A, et al. Proc Natl Acad Sci U S A, 2010 Apr 6. PMID 20308558. New genetic associations detected in a host response study to hepatitis B vaccine. Davila S, et al. Genes Immun, 2010 Apr. PMID 20237496. Myosin Vc, a member of the actin motor family associated with Rab8, is involved in the release of DV2 from HepG2 cells. Xu XF, et al. Intervirology, 2009. PMID 19641326. Rab8 regulates ABCA1 cell surface expression and facilitates cholesterol efflux in primary human macrophages. Linder MD, et al. Arterioscler Thromb Vasc Biol, 2009 Jun. PMID 19304576.

### **RAB8A Antibody (monoclonal) (M02) - Citations**

- [Cargo-selective apical exocytosis in epithelial cells is conducted by Myo5B, Slp4a, Vamp7, and Syntaxin 3.](#)