

RAB7L1 Antibody (monoclonal) (M03)**Mouse monoclonal antibody raised against a full length recombinant RAB7L1.****Catalog # AT3534a****Specification**

RAB7L1 Antibody (monoclonal) (M03) - Product Information

Application	WB, E
Primary Accession	O14966
Other Accession	BC002585
Reactivity	Human
Host	mouse
Clonality	Monoclonal
Isotype	IgG2b Kappa
Calculated MW	23155

RAB7L1 Antibody (monoclonal) (M03) - Additional Information**Gene ID** 8934**Other Names**

Ras-related protein Rab-7L1, Rab-7-like protein 1, Ras-related protein Rab-29, RAB29, RAB7L1

Target/Specificity

RAB7L1 (AAH02585, 1 a.a. ~ 203 a.a) full-length recombinant protein with GST tag. MW of the GST tag alone is 26 KDa.

Dilution

WB~~1:500~1000

Format

Clear, colorless solution in phosphate buffered saline, pH 7.2 .

Storage

Store at -20°C or lower. Aliquot to avoid repeated freezing and thawing.

Precautions

RAB7L1 Antibody (monoclonal) (M03) is for research use only and not for use in diagnostic or therapeutic procedures.

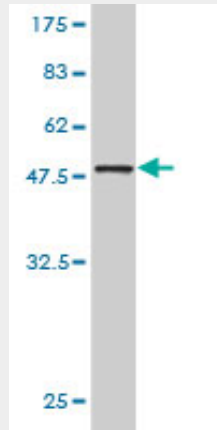
RAB7L1 Antibody (monoclonal) (M03) - Protocols

Provided below are standard protocols that you may find useful for product applications.

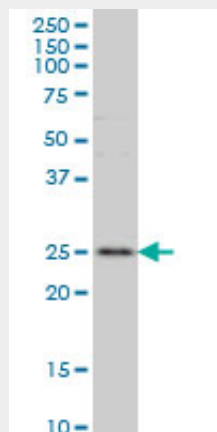
- [Western Blot](#)
- [Blocking Peptides](#)
- [Dot Blot](#)
- [Immunohistochemistry](#)

- [Immunofluorescence](#)
- [Immunoprecipitation](#)
- [Flow Cytometry](#)
- [Cell Culture](#)

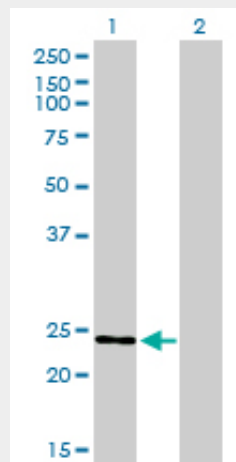
RAB7L1 Antibody (monoclonal) (M03) - Images



Antibody Reactive Against Recombinant Protein. Western Blot detection against Immunogen (48.07 KDa) .

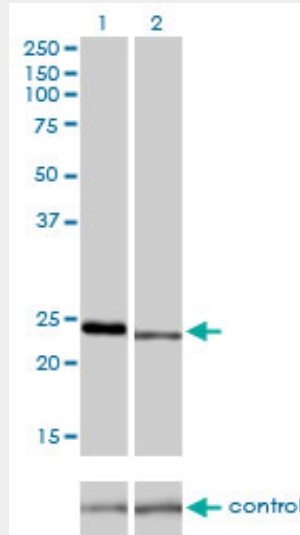


RAB7L1 monoclonal antibody (M03), clone 2B8 Western Blot analysis of RAB7L1 expression in Jurkat ((Cat # AT3534a)

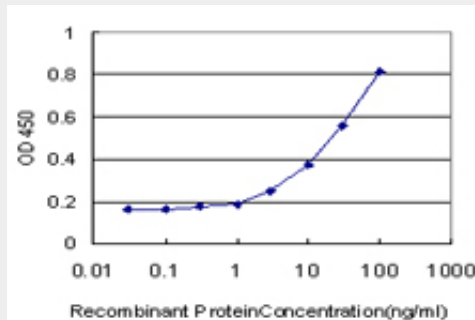


Western Blot analysis of RAB7L1 expression in transfected 293T cell line by RAB7L1 monoclonal antibody (M03), clone 2B8.

Lane 1: RAB7L1 transfected lysate(23.2 KDa).
 Lane 2: Non-transfected lysate.



Western blot analysis of RAB7L1 over-expressed 293 cell line, cotransfected with RAB7L1 Validated Chimera RNAi (Cat # AT3534a)



Detection limit for recombinant GST tagged RAB7L1 is approximately 1ng/ml as a capture antibody.

RAB7L1 Antibody (monoclonal) (M03) - References

Genetic variability at the PARK16 locus. Tucci A, et al. Eur J Hum Genet, 2010 Aug 4. PMID 20683486. Genome-wide association study identifies common variants at four loci as genetic risk factors for Parkinson's disease. Satake W, et al. Nat Genet, 2009 Dec. PMID 19915576. Diversification of transcriptional modulation: large-scale identification and characterization of putative alternative promoters of human genes. Kimura K, et al. Genome Res, 2006 Jan. PMID 16344560. The status, quality, and expansion of the NIH full-length cDNA project: the Mammalian Gene Collection (MGC). Gerhard DS, et al. Genome Res, 2004 Oct. PMID 15489334. A protein interaction framework for human mRNA degradation. Lehner B, et al. Genome Res, 2004 Jul. PMID 15231747.