

RAB6A Antibody (monoclonal) (M01)

Mouse monoclonal antibody raised against a partial recombinant RAB6A.

Catalog # AT3532a

Specification

RAB6A Antibody (monoclonal) (M01) - Product Information

Application	WB, E
Primary Accession	P20340
Other Accession	BC003617
Reactivity	Human, Rat
Host	mouse
Clonality	Monoclonal
Isotype	IgG2b Kappa
Calculated MW	23593

RAB6A Antibody (monoclonal) (M01) - Additional Information**Gene ID** 5870**Other Names**

Ras-related protein Rab-6A, Rab-6, RAB6A, RAB6

Target/Specificity

RAB6A (AAH03617, 109 a.a. ~ 208 a.a) partial recombinant protein with GST tag. MW of the GST tag alone is 26 KDa.

Dilution

WB ~ ~ 1:500 ~ 1000

Format

Clear, colorless solution in phosphate buffered saline, pH 7.2 .

Storage

Store at -20°C or lower. Aliquot to avoid repeated freezing and thawing.

Precautions

RAB6A Antibody (monoclonal) (M01) is for research use only and not for use in diagnostic or therapeutic procedures.

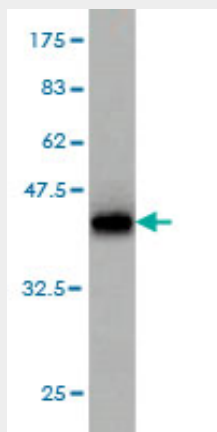
RAB6A Antibody (monoclonal) (M01) - Protocols

Provided below are standard protocols that you may find useful for product applications.

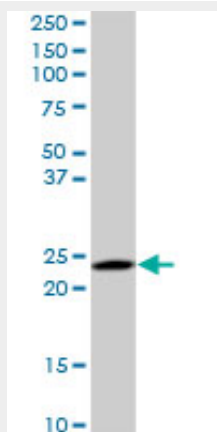
- [Western Blot](#)
- [Blocking Peptides](#)
- [Dot Blot](#)
- [Immunohistochemistry](#)

- [Immunofluorescence](#)
- [Immunoprecipitation](#)
- [Flow Cytometry](#)
- [Cell Culture](#)

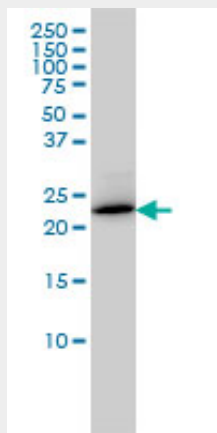
RAB6A Antibody (monoclonal) (M01) - Images



Antibody Reactive Against Recombinant Protein. Western Blot detection against Immunogen (36.63 KDa) .

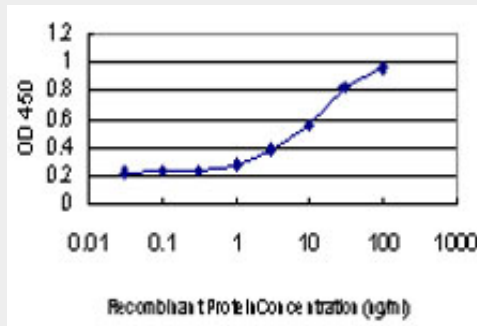


RAB6A monoclonal antibody (M01), clone 3G3. Western Blot analysis of RAB6A expression in PC-12 ((Cat # AT3532a)



RAB6A monoclonal antibody (M01), clone 3G3 Western Blot analysis of RAB6A expression in

HL-60 ((Cat # AT3532a)



Detection limit for recombinant GST tagged RAB6A is approximately 1ng/ml as a capture antibody.

RAB6A Antibody (monoclonal) (M01) - References

Rab and actomyosin-dependent fission of transport vesicles at the Golgi complex. Miserey-Lenkei S, et al. *Nat Cell Biol*, 2010 Jul. PMID 20562865. The localization of the Golgin GCC185 is independent of Rab6A/A' and Arl1. Houghton FJ, et al. *Cell*, 2009 Aug 21. PMID 19703403. Intracellular phospholipase A1gamma (iPLA1gamma) is a novel factor involved in coat protein complex I- and Rab6-independent retrograde transport between the endoplasmic reticulum and the Golgi complex. Morikawa RK, et al. *J Biol Chem*, 2009 Sep 25. PMID 19632984. Structural basis for recruitment of Rab6-interacting protein 1 to Golgi via a RUN domain. Recacha R, et al. *Structure*, 2009 Jan 14. PMID 19141279. Rab and Arl GTPase family members cooperate in the localization of the golgin GCC185. Burguete AS, et al. *Cell*, 2008 Jan 25. PMID 18243103.