

## **RAB21 Antibody (monoclonal) (M01)**

Mouse monoclonal antibody raised against a partial recombinant RAB21.

Catalog # AT3515a

### **Specification**

---

#### **RAB21 Antibody (monoclonal) (M01) - Product Information**

Application	IF, WB, IHC, E
Primary Accession	<a href="#">O9UL25</a>
Other Accession	<a href="#">NM_014999</a>
Reactivity	Human
Host	mouse
Clonality	Monoclonal
Isotype	IgG1 Kappa
Calculated MW	24348

#### **RAB21 Antibody (monoclonal) (M01) - Additional Information**

**Gene ID** 23011

##### **Other Names**

Ras-related protein Rab-21, RAB21, KIAA0118

##### **Target/Specificity**

RAB21 (NP\_055814, 116 a.a. ~ 225 a.a) partial recombinant protein with GST tag. MW of the GST tag alone is 26 KDa.

##### **Dilution**

WB~~1:500~1000

##### **Format**

Clear, colorless solution in phosphate buffered saline, pH 7.2 .

##### **Storage**

Store at -20°C or lower. Aliquot to avoid repeated freezing and thawing.

##### **Precautions**

RAB21 Antibody (monoclonal) (M01) is for research use only and not for use in diagnostic or therapeutic procedures.

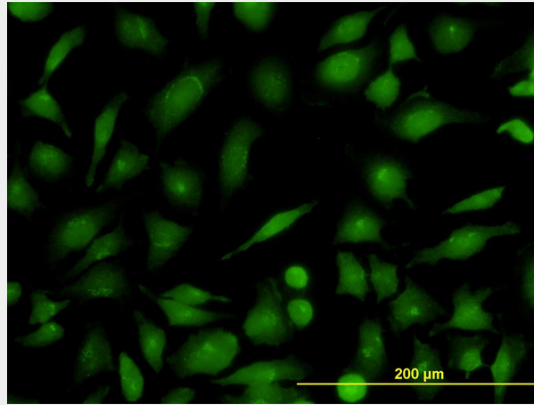
#### **RAB21 Antibody (monoclonal) (M01) - Protocols**

Provided below are standard protocols that you may find useful for product applications.

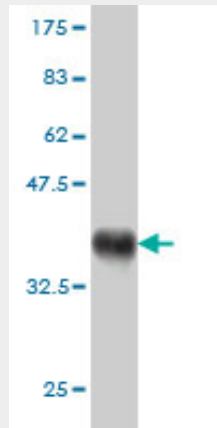
- [Western Blot](#)
- [Blocking Peptides](#)
- [Dot Blot](#)
- [Immunohistochemistry](#)

- [Immunofluorescence](#)
- [Immunoprecipitation](#)
- [Flow Cytometry](#)
- [Cell Culture](#)

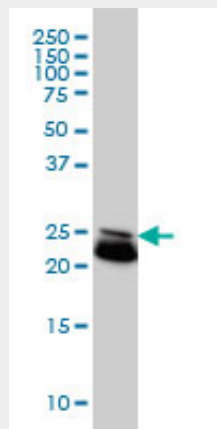
### RAB21 Antibody (monoclonal) (M01) - Images



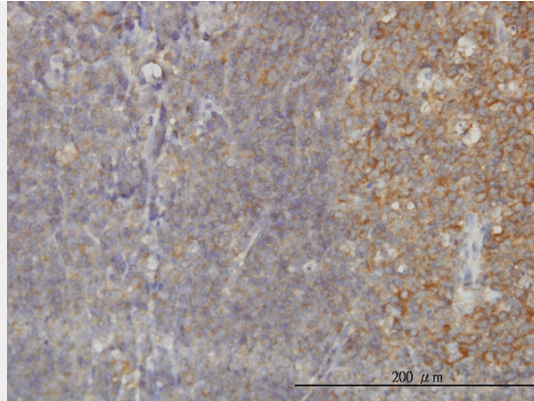
Immunofluorescence of monoclonal antibody to RAB21 on HeLa cell. [antibody concentration 10 ug/ml]



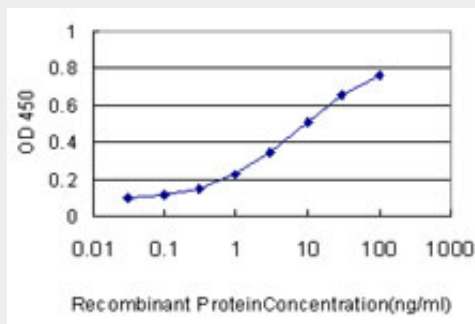
Antibody Reactive Against Recombinant Protein. Western Blot detection against Immunogen (37.84 KDa) .



RAB21 monoclonal antibody (M01), clone 1F6 Western Blot analysis of RAB21 expression in HeLa ( (Cat # AT3515a )



Immunoperoxidase of monoclonal antibody to RAB21 on formalin-fixed paraffin-embedded human tonsil. [antibody concentration 3 ug/ml]



Detection limit for recombinant GST tagged RAB21 is approximately 0.1ng/ml as a capture antibody.

### **RAB21 Antibody (monoclonal) (M01) - Background**

RAB21 belongs to the RAB family of small GTP-binding proteins that regulate intracellular vesicle targeting (Opdam et al., 2000 [PubMed 10887961]).

### **RAB21 Antibody (monoclonal) (M01) - References**

Role of Varp, a Rab21 exchange factor and TI-VAMP/VAMP7 partner, in neurite growth. Burgo A, et al. EMBO Rep, 2009 Oct. PMID 19745841. Integrin trafficking regulated by Rab21 is necessary for cytokinesis. Pellinen T, et al. Dev Cell, 2008 Sep. PMID 18804435. Structural basis for Rab GTPase activation by VPS9 domain exchange factors. Delprato A, et al. Nat Struct Mol Biol, 2007 May. PMID 17450153. Small GTPase Rab21 regulates cell adhesion and controls endosomal traffic of beta1-integrins. Pellinen T, et al. J Cell Biol, 2006 Jun 5. PMID 16754960. The LIFEdb database in 2006. Mehrle A, et al. Nucleic Acids Res, 2006 Jan 1. PMID 16381901.