

## **RAB1B Antibody (monoclonal) (M02)**

Mouse monoclonal antibody raised against a partial recombinant RAB1B.

Catalog # AT3514a

### **Specification**

---

#### **RAB1B Antibody (monoclonal) (M02) - Product Information**

Application	WB, IHC, E
Primary Accession	<a href="#">O9H0U4</a>
Other Accession	<a href="#">NM_030981</a>
Reactivity	Human
Host	mouse
Clonality	Monoclonal
Isotype	IgG2a Kappa
Calculated MW	22171

#### **RAB1B Antibody (monoclonal) (M02) - Additional Information**

**Gene ID** 81876

##### **Other Names**

Ras-related protein Rab-1B, RAB1B

##### **Target/Specificity**

RAB1B (NP\_112243, 91 a.a. ~ 201 a.a) partial recombinant protein with GST tag. MW of the GST tag alone is 26 KDa.

##### **Dilution**

WB~~1:500~1000

##### **Format**

Clear, colorless solution in phosphate buffered saline, pH 7.2 .

##### **Storage**

Store at -20°C or lower. Aliquot to avoid repeated freezing and thawing.

##### **Precautions**

RAB1B Antibody (monoclonal) (M02) is for research use only and not for use in diagnostic or therapeutic procedures.

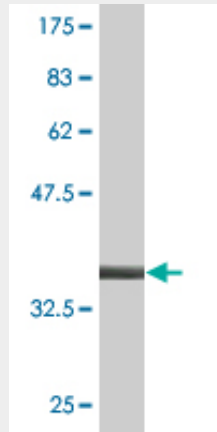
#### **RAB1B Antibody (monoclonal) (M02) - Protocols**

Provided below are standard protocols that you may find useful for product applications.

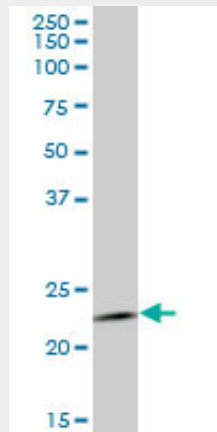
- [Western Blot](#)
- [Blocking Peptides](#)
- [Dot Blot](#)
- [Immunohistochemistry](#)

- [Immunofluorescence](#)
- [Immunoprecipitation](#)
- [Flow Cytometry](#)
- [Cell Culture](#)

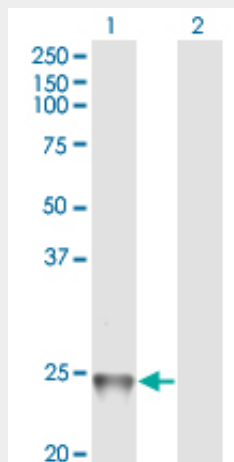
### RAB1B Antibody (monoclonal) (M02) - Images



Antibody Reactive Against Recombinant Protein. Western Blot detection against Immunogen (37.95 KDa) .

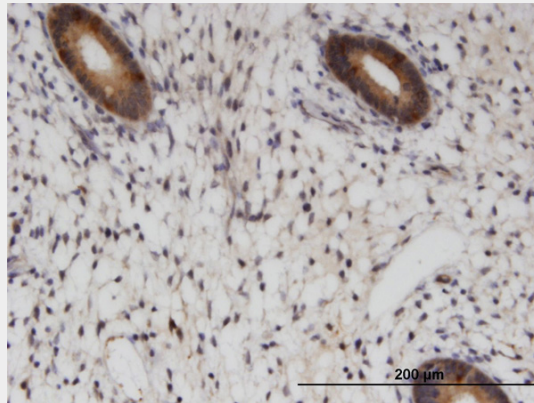


RAB1B monoclonal antibody (M02), clone 1B2. Western Blot analysis of RAB1B expression in A-431 ( (Cat # AT3514a )

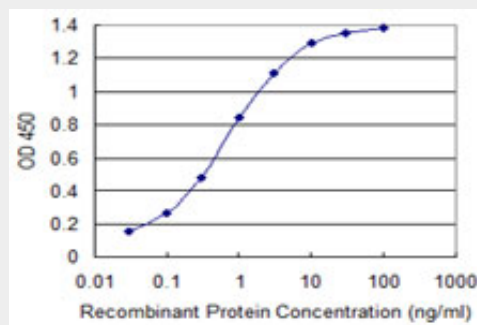


Western Blot analysis of RAB1B expression in transfected 293T cell line by RAB1B monoclonal antibody (M02), clone 1B2.

Lane 1: RAB1B transfected lysate(22.2 KDa).  
Lane 2: Non-transfected lysate.



Immunoperoxidase of monoclonal antibody to RAB1B on formalin-fixed paraffin-embedded human endometrium. [antibody concentration 3 µg/ml]



Detection limit for recombinant GST tagged RAB1B is 0.03 ng/ml as a capture antibody.

### **RAB1B Antibody (monoclonal) (M02) - Background**

Members of the RAB protein family, such as RAB1B, are low molecular mass monomeric GTPases localized on the cytoplasmic surfaces of distinct membrane-bound organelles. RAB1B functions in the early secretory pathway and is essential for vesicle transport between the endoplasmic reticulum (ER) and Golgi (Chen et al., 1997 [PubMed 9030196]; Alvarez et al., 2003 [PubMed 12802079]).

### **RAB1B Antibody (monoclonal) (M02) - References**

Role of the GTPase Rab1b in ebolavirus particle formation. Yamayoshi S, et al. J Virol, 2010 May. PMID 20164217. A bifunctional bacterial protein links GDI displacement to Rab1 activation. Machner MP, et al. Science, 2007 Nov 9. PMID 17947549. Systematic identification of SH3 domain-mediated human protein-protein interactions by peptide array target screening. Wu C, et al. Proteomics, 2007 Jun. PMID 17474147. Rab1b interacts with GBF1 and modulates both ARF1 dynamics and COPI association. Monetta P, et al. Mol Biol Cell, 2007 Jul. PMID 17429068. Large-scale mapping of human protein-protein interactions by mass spectrometry. Ewing RM, et al. Mol Syst Biol, 2007. PMID 17353931.