

PYCRL Antibody (monoclonal) (M01)

Mouse monoclonal antibody raised against a partial recombinant PYCRL.

Catalog # AT3505a

Specification

PYCRL Antibody (monoclonal) (M01) - Product Information

Application	IF, IP, WB, E
Primary Accession	Q53H96
Other Accession	NM_023078
Reactivity	Human
Host	mouse
Clonality	Monoclonal
Isotype	IgG2a Kappa
Calculated MW	28663

PYCRL Antibody (monoclonal) (M01) - Additional Information

Gene ID 65263

Other Names

Pyrroline-5-carboxylate reductase 3, P5C reductase 3, P5CR 3, Pyrroline-5-carboxylate reductase-like protein, PYCRL

Target/Specificity

PYCRL (NP_075566, 32 a.a. ~ 131 a.a) partial recombinant protein with GST tag. MW of the GST tag alone is 26 KDa.

Dilution

WB~~1:500~1000

Format

Clear, colorless solution in phosphate buffered saline, pH 7.2 .

Storage

Store at -20°C or lower. Aliquot to avoid repeated freezing and thawing.

Precautions

PYCRL Antibody (monoclonal) (M01) is for research use only and not for use in diagnostic or therapeutic procedures.

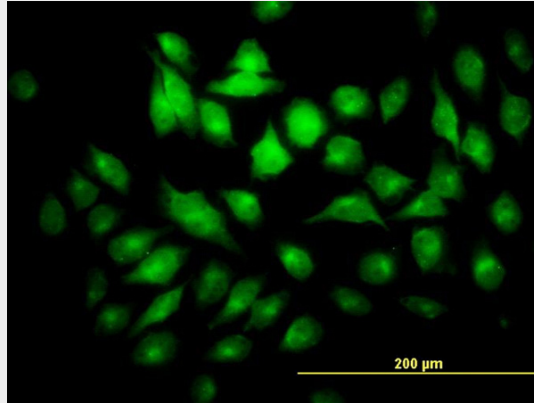
PYCRL Antibody (monoclonal) (M01) - Protocols

Provided below are standard protocols that you may find useful for product applications.

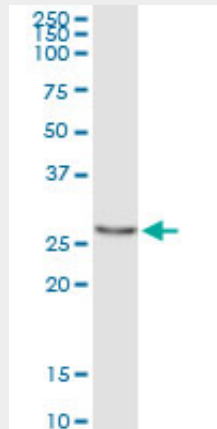
- [Western Blot](#)
- [Blocking Peptides](#)
- [Dot Blot](#)

- [Immunohistochemistry](#)
- [Immunofluorescence](#)
- [Immunoprecipitation](#)
- [Flow Cytometry](#)
- [Cell Culture](#)

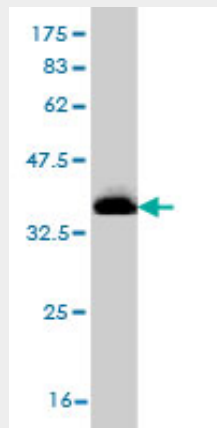
PYCRL Antibody (monoclonal) (M01) - Images



Immunofluorescence of monoclonal antibody to PYCRL on HeLa cell. [antibody concentration 10 ug/ml]

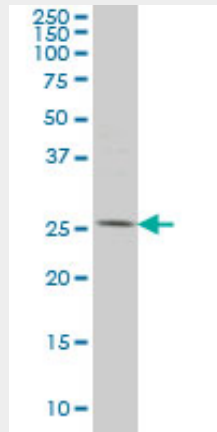


Immunoprecipitation of PYCRL transfected lysate using anti-PYCRL monoclonal antibody and Protein A Magnetic Bead ([U0007](#)), and immunoblotted with PYCRL monoclonal antibody.

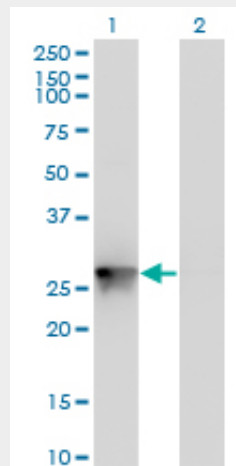


Antibody Reactive Against Recombinant Protein. Western Blot detection against Immunogen

(36.74 KDa) .

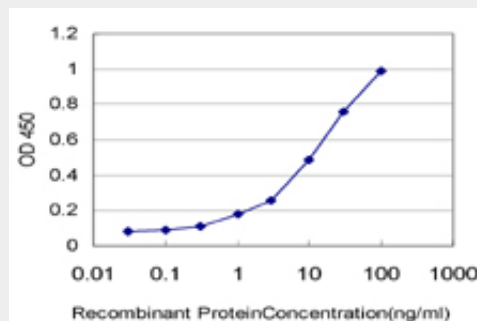


PYCRL monoclonal antibody (M01), clone 4F11 Western Blot analysis of PYCRL expression in HeLa (Cat # AT3505a)



Western Blot analysis of PYCRL expression in transfected 293T cell line by PYCRL monoclonal antibody (M01), clone 4F11.

Lane 1: PYCRL transfected lysate (Predicted MW: 28.6 KDa).
 Lane 2: Non-transfected lysate.



Detection limit for recombinant GST tagged PYCRL is approximately 0.3ng/ml as a capture antibody.

PYCRL Antibody (monoclonal) (M01) - References

1.Functional specialization in proline biosynthesis of melanoma.De Ingeniis J, Ratnikov B,

Richardson AD, Scott DA, Aza-Blanc P, De SK, Kazanov M, Pellecchia M, Ronai Z, Osterman AL, Smith JW. PLoS One. 2012;7(9):e45190. Epub 2012 Sep 14.