

PTX3 Antibody (monoclonal) (M02)

Mouse monoclonal antibody raised against a partial recombinant PTX3.

Catalog # AT3500a

Specification

PTX3 Antibody (monoclonal) (M02) - Product Information

Application	IF, WB, E
Primary Accession	P26022
Other Accession	NM_002852
Reactivity	Human
Host	mouse
Clonality	Monoclonal
Isotype	IgG2a Kappa
Calculated MW	41976

PTX3 Antibody (monoclonal) (M02) - Additional Information

Gene ID 5806

Other Names

Pentraxin-related protein PTX3, Pentaxin-related protein PTX3, Tumor necrosis factor alpha-induced protein 5, TNF alpha-induced protein 5, Tumor necrosis factor-inducible gene 14 protein, TSG-14, PTX3, TNFAIP5, TSG14

Target/Specificity

PTX3 (NP_002843, 282 a.a. ~ 380 a.a) partial recombinant protein with GST tag. MW of the GST tag alone is 26 KDa.

Dilution

WB~~1:500~1000

Format

Clear, colorless solution in phosphate buffered saline, pH 7.2 .

Storage

Store at -20°C or lower. Aliquot to avoid repeated freezing and thawing.

Precautions

PTX3 Antibody (monoclonal) (M02) is for research use only and not for use in diagnostic or therapeutic procedures.

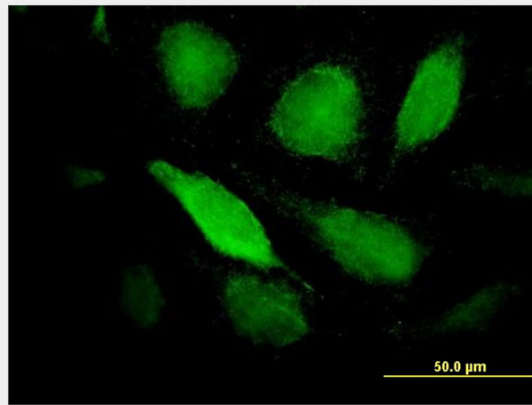
PTX3 Antibody (monoclonal) (M02) - Protocols

Provided below are standard protocols that you may find useful for product applications.

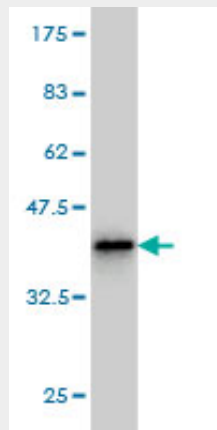
- [Western Blot](#)
- [Blocking Peptides](#)

- [Dot Blot](#)
- [Immunohistochemistry](#)
- [Immunofluorescence](#)
- [Immunoprecipitation](#)
- [Flow Cytometry](#)
- [Cell Culture](#)

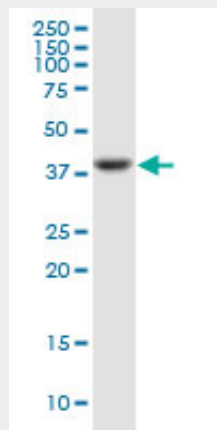
PTX3 Antibody (monoclonal) (M02) - Images



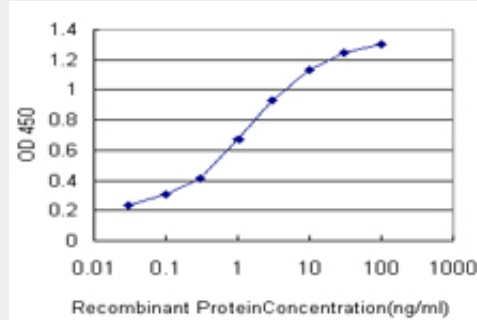
Immunofluorescence of monoclonal antibody to PTX3 on HeLa cell. [antibody concentration 10 ug/ml]



Antibody Reactive Against Recombinant Protein. Western Blot detection against Immunogen (36.63 KDa) .



PTX3 monoclonal antibody (M02), clone 2B10. Western Blot analysis of PTX3 expression in U-2 OS.



Detection limit for recombinant GST tagged PTX3 is approximately 0.03ng/ml as a capture antibody.

PTX3 Antibody (monoclonal) (M02) - References

1.Repetitive hyperthermia attenuates progression of left ventricular hypertrophy and increases telomerase activity in hypertensive rats.Oyama JI, Maeda T, Sasaki M, Higuchi Y, Node K, Makino N.Am J Physiol Heart Circ Physiol. 2012 Mar 16. [Epub ahead of print]