

PSMD5 Antibody (monoclonal) (M01)

Mouse monoclonal antibody raised against a partial recombinant PSMD5.

Catalog # AT3470a

Specification

PSMD5 Antibody (monoclonal) (M01) - Product Information

Application	WB, IHC, E
Primary Accession	O16401
Other Accession	BC014478
Reactivity	Human
Host	mouse
Clonality	Monoclonal
Isotype	IgG1 Kappa
Calculated MW	56196

PSMD5 Antibody (monoclonal) (M01) - Additional Information

Gene ID 5711

Other Names

26S proteasome non-ATPase regulatory subunit 5, 26S protease subunit S5 basic, 26S proteasome subunit S5B, PSMD5, KIAA0072

Target/Specificity

PSMD5 (AAH14478, 405 a.a. ~ 504 a.a) partial recombinant protein with GST tag. MW of the GST tag alone is 26 KDa.

Dilution

WB~~1:500~1000

Format

Clear, colorless solution in phosphate buffered saline, pH 7.2 .

Storage

Store at -20°C or lower. Aliquot to avoid repeated freezing and thawing.

Precautions

PSMD5 Antibody (monoclonal) (M01) is for research use only and not for use in diagnostic or therapeutic procedures.

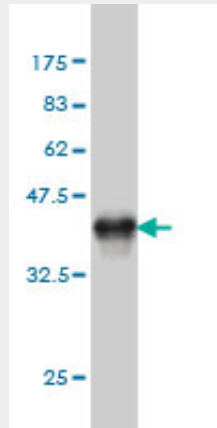
PSMD5 Antibody (monoclonal) (M01) - Protocols

Provided below are standard protocols that you may find useful for product applications.

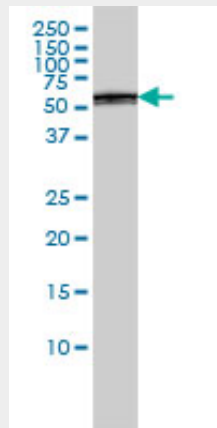
- [Western Blot](#)
- [Blocking Peptides](#)
- [Dot Blot](#)

- [Immunohistochemistry](#)
- [Immunofluorescence](#)
- [Immunoprecipitation](#)
- [Flow Cytometry](#)
- [Cell Culture](#)

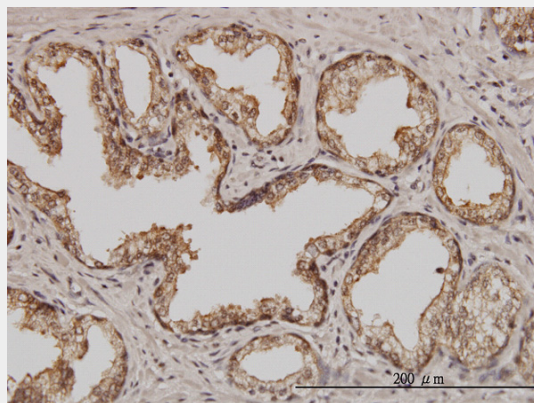
PSMD5 Antibody (monoclonal) (M01) - Images



Antibody Reactive Against Recombinant Protein. Western Blot detection against Immunogen (36.74 kDa) .

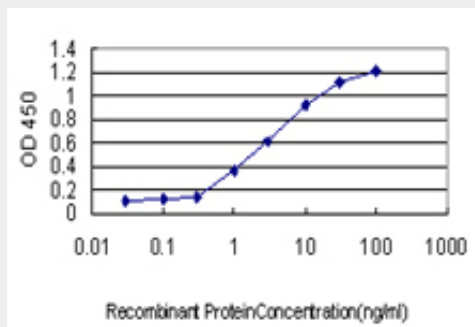


PSMD5 monoclonal antibody (M01), clone 3E2 Western Blot analysis of PSMD5 expression in A-431 ((Cat # AT3470a)



Immunoperoxidase of monoclonal antibody to PSMD5 on formalin-fixed paraffin-embedded

human prostate. [antibody concentration 3 ug/ml]



Detection limit for recombinant GST tagged PSMD5 is approximately 0.1ng/ml as a capture antibody.

PSMD5 Antibody (monoclonal) (M01) - Background

The 26S proteasome is a multicatalytic proteinase complex with a highly ordered structure composed of 2 complexes, a 20S core and a 19S regulator. The 20S core is composed of 4 rings of 28 non-identical subunits; 2 rings are composed of 7 alpha subunits and 2 rings are composed of 7 beta subunits. The 19S regulator is composed of a base, which contains 6 ATPase subunits and 2 non-ATPase subunits, and a lid, which contains up to 10 non-ATPase subunits. Proteasomes are distributed throughout eukaryotic cells at a high concentration and cleave peptides in an ATP/ubiquitin-dependent process in a non-lysosomal pathway. An essential function of a modified proteasome, the immunoproteasome, is the processing of class I MHC peptides. This gene encodes a non-ATPase subunit of the 19S regulator base.

PSMD5 Antibody (monoclonal) (M01) - References

Assembly pathway of the Mammalian proteasome base subcomplex is mediated by multiple specific chaperones. Kaneko T, et al. *Cell*, 2009 May 29. PMID 19490896. Chaperone-mediated pathway of proteasome regulatory particle assembly. Roelofs J, et al. *Nature*, 2009 Jun 11. PMID 19412159. Hsm3/S5b participates in the assembly pathway of the 19S regulatory particle of the proteasome. Le Tallec B, et al. *Mol Cell*, 2009 Feb 13. PMID 19217412. Toward a confocal subcellular atlas of the human proteome. Barbe L, et al. *Mol Cell Proteomics*, 2008 Mar. PMID 18029348. Characterization of the interactome of the human MutL homologues MLH1, PMS1, and PMS2. Cannavo E, et al. *J Biol Chem*, 2007 Feb 2. PMID 17148452.