

PRPS1L1 Antibody (monoclonal) (M01)

Mouse monoclonal antibody raised against a partial recombinant PRPS1L1.

Catalog # AT3443a

Specification

PRPS1L1 Antibody (monoclonal) (M01) - Product Information

Application	WB
Primary Accession	P21108
Other Accession	NM_175886
Reactivity	Human, Mouse, Rat
Host	mouse
Clonality	Monoclonal
Isotype	IgG3 Kappa
Calculated MW	34839

PRPS1L1 Antibody (monoclonal) (M01) - Additional Information

Gene ID 221823

Other Names

Ribose-phosphate pyrophosphokinase 3, Phosphoribosyl pyrophosphate synthase 1-like 1, PRPS1-like 1, Phosphoribosyl pyrophosphate synthase III, PRS-III, PRPS1L1, PRPS3, PRPSL

Target/Specificity

PRPS1L1 (NP_787082, 146 a.a. ~ 243 a.a) partial recombinant protein with GST tag. MW of the GST tag alone is 26 KDa.

Dilution

WB~~1:500~1000

Format

Clear, colorless solution in phosphate buffered saline, pH 7.2 .

Storage

Store at -20°C or lower. Aliquot to avoid repeated freezing and thawing.

Precautions

PRPS1L1 Antibody (monoclonal) (M01) is for research use only and not for use in diagnostic or therapeutic procedures.

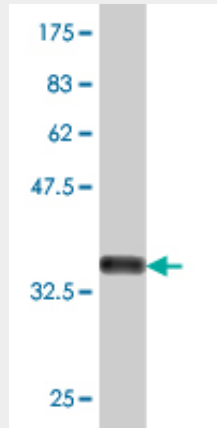
PRPS1L1 Antibody (monoclonal) (M01) - Protocols

Provided below are standard protocols that you may find useful for product applications.

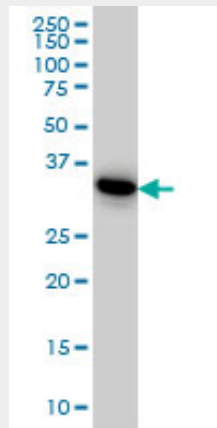
- [Western Blot](#)
- [Blocking Peptides](#)
- [Dot Blot](#)

- [Immunohistochemistry](#)
- [Immunofluorescence](#)
- [Immunoprecipitation](#)
- [Flow Cytometry](#)
- [Cell Culture](#)

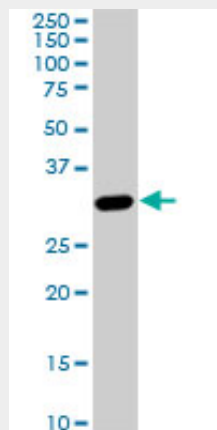
PRPS1L1 Antibody (monoclonal) (M01) - Images



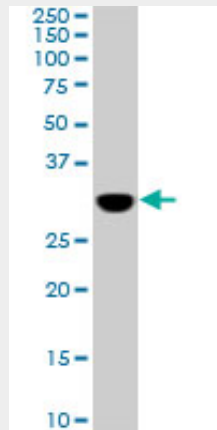
Antibody Reactive Against Recombinant Protein. Western Blot detection against Immunogen (36.52 KDa) .



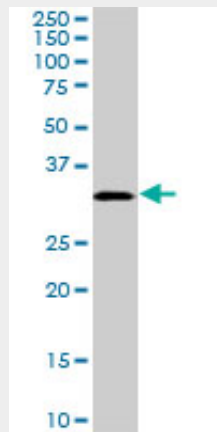
PRPS1L1 monoclonal antibody (M01), clone 5E10 Western Blot analysis of PRPS1L1 expression in HeLa ((Cat # AT3443a)



PRPS1L1 monoclonal antibody (M01), clone 5E10. Western Blot analysis of PRPS1L1 expression in PC-12 ((Cat # AT3443a)



PRPS1L1 monoclonal antibody (M01), clone 5E10. Western Blot analysis of PRPS1L1 expression in Raw 264.7 ((Cat # AT3443a)



PRPS1L1 monoclonal antibody (M01), clone 5E10. Western Blot analysis of PRPS1L1 expression in NIH/3T3 ((Cat # AT3443a)

PRPS1L1 Antibody (monoclonal) (M01) - Background

This intronless gene is specifically expressed in the testis, and encodes a protein that is highly homologous to the two subunits of phosphoribosylpyrophosphate synthetase encoded by human X-linked genes, PRPS1 and PRPS2. These enzymes convert pyrimidine, purine or pyridine bases to the corresponding ribonucleoside monophosphates. In vitro transcription/translation and site-directed mutagenesis studies indicate that translation of this mRNA initiates exclusively at a non-AUG (ACG) codon.

PRPS1L1 Antibody (monoclonal) (M01) - References

Generation and initial analysis of more than 15,000 full-length human and mouse cDNA sequences. Strausberg RL, et al. Proc Natl Acad Sci U S A, 2002 Dec 24. PMID 12477932. The sequence of the human genome. Venter JC, et al. Science, 2001 Feb 16. PMID 11181995. A human testis-specific mRNA for phosphoribosylpyrophosphate synthetase that initiates from a non-AUG codon. Taira M, et al. J Biol Chem, 1990 Sep 25. PMID 2168892. Promoter regions of the human X-linked housekeeping genes PRPS1 and PRPS2 encoding phosphoribosylpyrophosphate synthetase subunit I and II isoforms. Ishizuka T, et al. Biochim Biophys Acta, 1992 Mar 24. PMID 1314091.