

PROCR Antibody (monoclonal) (M03)

Mouse monoclonal antibody raised against a full length recombinant PROCR.

Catalog # AT3440a

Specification

PROCR Antibody (monoclonal) (M03) - Product Information

Application	IF, WB, IHC
Primary Accession	O9UNN8
Other Accession	BC014451
Reactivity	Human
Host	Mouse
Clonality	Monoclonal
Isotype	IgG1 Kappa
Calculated MW	26671

PROCR Antibody (monoclonal) (M03) - Additional Information

Gene ID 10544

Other Names

Endothelial protein C receptor, Activated protein C receptor, APC receptor, Endothelial cell protein C receptor, CD201, PROCR, EPCR

Target/Specificity

PROCR (AAH14451.1, 1 a.a. ~ 238 a.a) full-length recombinant protein with GST tag. MW of the GST tag alone is 26 KDa.

Dilution

WB~~1:500~1000

Format

Clear, colorless solution in phosphate buffered saline, pH 7.2 .

Storage

Store at -20°C or lower. Aliquot to avoid repeated freezing and thawing.

Precautions

PROCR Antibody (monoclonal) (M03) is for research use only and not for use in diagnostic or therapeutic procedures.

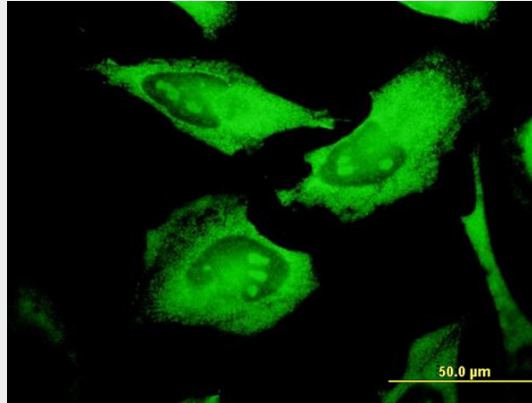
PROCR Antibody (monoclonal) (M03) - Protocols

Provided below are standard protocols that you may find useful for product applications.

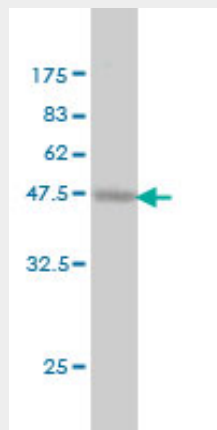
- [Western Blot](#)
- [Blocking Peptides](#)
- [Dot Blot](#)

- [Immunohistochemistry](#)
- [Immunofluorescence](#)
- [Immunoprecipitation](#)
- [Flow Cytometry](#)
- [Cell Culture](#)

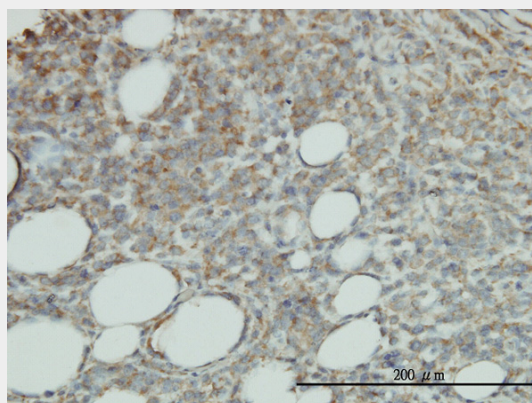
PROCR Antibody (monoclonal) (M03) - Images



Immunofluorescence of monoclonal antibody to PROCR on HeLa cell. [antibody concentration 10 ug/ml]



Antibody Reactive Against Recombinant Protein. Western Blot detection against Immunogen (51.92 KDa) .



Immunoperoxidase of monoclonal antibody to PROCR on formalin-fixed paraffin-embedded human malignant lymphoma, diffuse large B tissue. [antibody concentration 3 ug/ml]

PROCR Antibody (monoclonal) (M03) - Background

The protein encoded by this gene is a receptor for activated protein C, a serine protease activated by and involved in the blood coagulation pathway. The encoded protein is an N-glycosylated type I membrane protein that enhances the activation of protein C. Mutations in this gene have been associated with venous thromboembolism and myocardial infarction, as well as with late fetal loss during pregnancy.

PROCR Antibody (monoclonal) (M03) - References

1. Inhibitory effects of epi-sesamin on endothelial protein C receptor shedding in vitro and in vivo. Ku SK, Lee W, Yoo H, Han CK, Bae JS *Inflamm Res*. 2013 Jul 25. 2. Rosmarinic acid down-regulates endothelial protein C receptor shedding in vitro and in vivo. Ku SK, Yang EJ, Song KS, Bae JS *Food Chem Toxicol*. 2013 Jun 14;59C:311-315. doi: 10.1016/j.fct.2013.06.003. 3. Down-regulation of endothelial protein C receptor shedding by persicarin and isorhamnetin-3-O-galactoside. Ku SK, Han MS, Bae JS *Thromb Res*. 2013 May 30. pii: S0049-3848(13)00196-5. doi: 10.1016/j.thromres.2013.05.004. 4. Emodin-6-O-β-D-glucoside down-regulates endothelial protein C receptor shedding. Lee W, Ku SK, Bae JS *Arch Pharm Res*. 2013 Apr 16.