

## **PROCR Antibody (monoclonal) (M01)**

Mouse monoclonal antibody raised against a full length recombinant PROCR.

Catalog # AT3439a

### **Specification**

---

#### **PROCR Antibody (monoclonal) (M01) - Product Information**

|                   |                          |
|-------------------|--------------------------|
| Application       | E                        |
| Primary Accession | <a href="#">O9UNN8</a>   |
| Other Accession   | <a href="#">BC014451</a> |
| Reactivity        | Human                    |
| Host              | mouse                    |
| Clonality         | Monoclonal               |
| Isotype           | IgG1 kappa               |
| Calculated MW     | 26671                    |

#### **PROCR Antibody (monoclonal) (M01) - Additional Information**

**Gene ID** 10544

##### **Other Names**

Endothelial protein C receptor, Activated protein C receptor, APC receptor, Endothelial cell protein C receptor, CD201, PROCR, EPCR

##### **Target/Specificity**

PROCR (AAH14451.1, 1 a.a. ~ 238 a.a) full-length recombinant protein with GST tag. MW of the GST tag alone is 26 KDa.

##### **Format**

Clear, colorless solution in phosphate buffered saline, pH 7.2 .

##### **Storage**

Store at -20°C or lower. Aliquot to avoid repeated freezing and thawing.

##### **Precautions**

PROCR Antibody (monoclonal) (M01) is for research use only and not for use in diagnostic or therapeutic procedures.

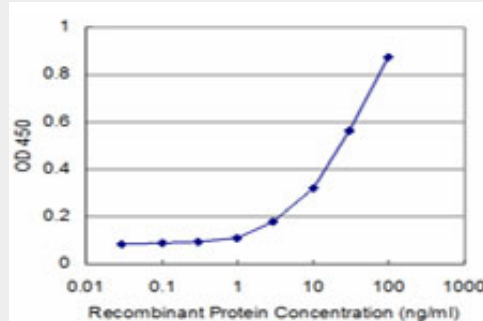
#### **PROCR Antibody (monoclonal) (M01) - Protocols**

Provided below are standard protocols that you may find useful for product applications.

- [Western Blot](#)
- [Blocking Peptides](#)
- [Dot Blot](#)
- [Immunohistochemistry](#)
- [Immunofluorescence](#)
- [Immunoprecipitation](#)

- [Flow Cytometry](#)
- [Cell Culture](#)

### **PROCR Antibody (monoclonal) (M01) - Images**



Detection limit for recombinant GST tagged PROCR is approximately 3ng/ml as a capture antibody.

### **PROCR Antibody (monoclonal) (M01) - Background**

The protein encoded by this gene is a receptor for activated protein C, a serine protease activated by and involved in the blood coagulation pathway. The encoded protein is an N-glycosylated type I membrane protein that enhances the activation of protein C. Mutations in this gene have been associated with venous thromboembolism and myocardial infarction, as well as with late fetal loss during pregnancy.

### **PROCR Antibody (monoclonal) (M01) - References**

Variation at the NFATC2 Locus Increases the Risk of Thiazolinedione-Induced Edema in the Diabetes REduction Assessment with ramipril and rosiglitazone Medication (DREAM) Study. Bailey SD, et al. Diabetes Care, 2010 Jul 13. PMID 20628086. Thrombin down-regulates the TGF-beta-mediated synthesis of collagen and fibronectin by human proximal tubule epithelial cells through the EPCR-dependent activation of PAR-1. Bae JS, et al. J Cell Physiol, 2010 Oct. PMID 20506163. New genetic associations detected in a host response study to hepatitis B vaccine. Davila S, et al. Genes Immun, 2010 Apr. PMID 20237496. Novel associations of multiple genetic loci with plasma levels of factor VII, factor VIII, and von Willebrand factor: The CHARGE (Cohorts for Heart and Aging Research in Genome Epidemiology) Consortium. Smith NL, et al. Circulation, 2010 Mar 30. PMID 20231535. Paternal endothelial protein C receptor 219Gly variant as a mild and limited risk factor for deep vein thrombosis during pregnancy. Galanaud JP, et al. J Thromb Haemost, 2010 Apr. PMID 20141580.