

PRL Antibody (monoclonal) (M04)

Mouse monoclonal antibody raised against a full length recombinant PRL.

Catalog # AT3438a

Specification

PRL Antibody (monoclonal) (M04) - Product Information

| | |
|-------------------|--------------------------|
| Application | WB, E |
| Primary Accession | P01236 |
| Other Accession | BC015850 |
| Reactivity | Human |
| Host | mouse |
| Clonality | Monoclonal |
| Isotype | IgG2a Kappa |
| Calculated MW | 25876 |

PRL Antibody (monoclonal) (M04) - Additional Information**Gene ID** 5617**Other Names**

Prolactin, PRL, PRL

Target/Specificity

PRL (AAH15850, 29 a.a. ~ 227 a.a) full-length recombinant protein with GST tag. MW of the GST tag alone is 26 KDa.

Dilution

WB~~1:500~1000

Format

Clear, colorless solution in phosphate buffered saline, pH 7.2 .

Storage

Store at -20°C or lower. Aliquot to avoid repeated freezing and thawing.

Precautions

PRL Antibody (monoclonal) (M04) is for research use only and not for use in diagnostic or therapeutic procedures.

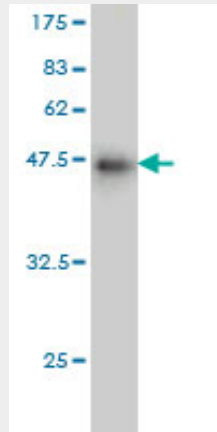
PRL Antibody (monoclonal) (M04) - Protocols

Provided below are standard protocols that you may find useful for product applications.

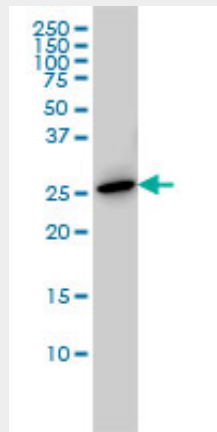
- [Western Blot](#)
- [Blocking Peptides](#)
- [Dot Blot](#)
- [Immunohistochemistry](#)

- [Immunofluorescence](#)
- [Immunoprecipitation](#)
- [Flow Cytometry](#)
- [Cell Culture](#)

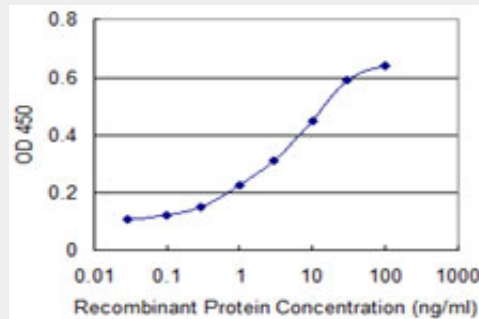
PRL Antibody (monoclonal) (M04) - Images



Antibody Reactive Against Recombinant Protein. Western Blot detection against Immunogen (47.63 KDa) .



PRL monoclonal antibody (M04), clone 1A8 Western Blot analysis of PRL expression in Hela S3 NE ((Cat # AT3438a)



Detection limit for recombinant GST tagged PRL is approximately 0.3ng/ml as a capture antibody.

PRL Antibody (monoclonal) (M04) - References

Examination of genetic polymorphisms in newborns for signatures of sex-specific prenatal

selection. Ucisik-Akkaya E, et al. Mol Hum Reprod, 2010 Oct. PMID 20587610.No association between oxytocin or prolactin gene variants and childhood-onset mood disorders. Strauss JS, et al. Psychoneuroendocrinology, 2010 Oct. PMID 20547007.Obligate ordered binding of human lactogenic cytokines. Voorhees JL, et al. J Biol Chem, 2010 Jun 25. PMID 20427283.L-type voltage-dependent calcium channel alpha subunit 1C is a novel candidate gene associated with secondary hyperparathyroidism: an application of haplotype-based analysis for multiple linked single nucleotide polymorphisms. Yokoyama K, et al. Nephron Clin Pract, 2010. PMID 20424473.HLA class II, MICA and PRL gene polymorphisms: the common contribution to the systemic lupus erythematosus development in Czech population. Fojt?kov? M, et al. Rheumatol Int, 2010 Mar 30. PMID 20352225.