

PRKCD Antibody (monoclonal) (M06)

Mouse monoclonal antibody raised against a partial recombinant PRKCD.

Catalog # AT3434a

Specification

PRKCD Antibody (monoclonal) (M06) - Product Information

| | |
|-------------------|---------------------------|
| Application | IF, WB, E |
| Primary Accession | Q05655 |
| Other Accession | NM_006254 |
| Reactivity | Human |
| Host | mouse |
| Clonality | Monoclonal |
| Isotype | IgG2a Kappa |
| Calculated MW | 77505 |

PRKCD Antibody (monoclonal) (M06) - Additional Information

Gene ID 5580

Other Names

Protein kinase C delta type, Tyrosine-protein kinase PRKCD, nPKC-delta, Protein kinase C delta type regulatory subunit, Protein kinase C delta type catalytic subunit, Sphingosine-dependent protein kinase-1, SDK1, PRKCD

Target/Specificity

PRKCD (NP_006245, 577 a.a. ~ 676 a.a) partial recombinant protein with GST tag. MW of the GST tag alone is 26 KDa.

Dilution

WB~~1:500~1000

Format

Clear, colorless solution in phosphate buffered saline, pH 7.2 .

Storage

Store at -20°C or lower. Aliquot to avoid repeated freezing and thawing.

Precautions

PRKCD Antibody (monoclonal) (M06) is for research use only and not for use in diagnostic or therapeutic procedures.

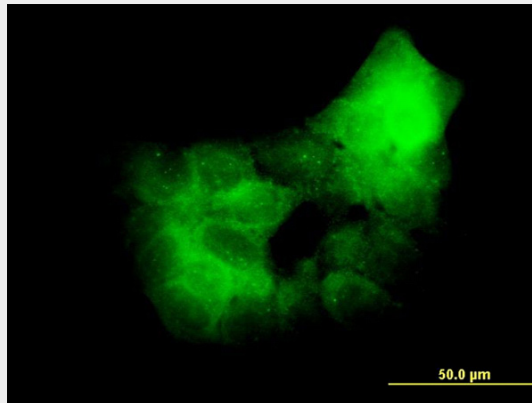
PRKCD Antibody (monoclonal) (M06) - Protocols

Provided below are standard protocols that you may find useful for product applications.

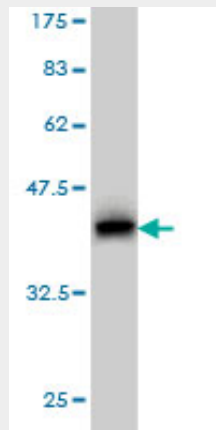
- [Western Blot](#)
- [Blocking Peptides](#)

- [Dot Blot](#)
- [Immunohistochemistry](#)
- [Immunofluorescence](#)
- [Immunoprecipitation](#)
- [Flow Cytometry](#)
- [Cell Culture](#)

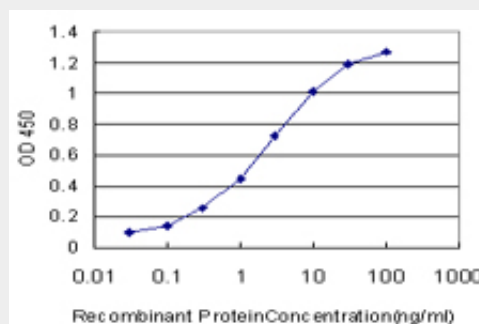
PRKCD Antibody (monoclonal) (M06) - Images



Immunofluorescence of monoclonal antibody to PRKCD on A-431 cell. [antibody concentration 10 ug/ml]



Antibody Reactive Against Recombinant Protein. Western Blot detection against Immunogen (36.74 KDa) .



Detection limit for recombinant GST tagged PRKCD is approximately 0.1ng/ml as a capture antibody.

PRKCD Antibody (monoclonal) (M06) - Background

Protein kinase C (PKC) is a family of serine- and threonine-specific protein kinases that can be activated by calcium and the second messenger diacylglycerol. PKC family members phosphorylate a wide variety of protein targets and are known to be involved in diverse cellular signaling pathways. PKC family members also serve as major receptors for phorbol esters, a class of tumor promoters. Each member of the PKC family has a specific expression profile and is believed to play distinct roles in cells. The protein encoded by this gene is one of the PKC family members. Studies both in human and mice demonstrate that this kinase is involved in B cell signaling and in the regulation of growth, apoptosis, and differentiation of a variety of cell types. Alternatively spliced transcript variants encoding the same protein have been observed.

PRKCD Antibody (monoclonal) (M06) - References

1.Role of calpain-9 and PKC-delta in the apoptotic mechanism of lumen formation in CEACAM1 transfected breast epithelial cells.Chen CJ, Nguyen T, Shively JE.Exp Cell Res. 2009 Nov 10. [Epub ahead of print]