

POU6F2 Antibody (monoclonal) (M08)

Mouse monoclonal antibody raised against a partial recombinant POU6F2.

Catalog # AT3389a

Specification

POU6F2 Antibody (monoclonal) (M08) - Product Information

Application	WB
Primary Accession	P78424
Other Accession	NM_007252
Reactivity	Human
Host	mouse
Clonality	Monoclonal
Isotype	IgG2a Kappa
Calculated MW	73265

POU6F2 Antibody (monoclonal) (M08) - Additional Information

Gene ID 11281

Other Names

POU domain, class 6, transcription factor 2, Retina-derived POU domain factor 1, RPF-1, POU6F2, RPF1

Target/Specificity

POU6F2 (NP_009183, 2 a.a. ~ 87 a.a) partial recombinant protein with GST tag. MW of the GST tag alone is 26 kDa.

Dilution

WB ~ 1:500 ~ 1000

Format

Clear, colorless solution in phosphate buffered saline, pH 7.2 .

Storage

Store at -20°C or lower. Aliquot to avoid repeated freezing and thawing.

Precautions

POU6F2 Antibody (monoclonal) (M08) is for research use only and not for use in diagnostic or therapeutic procedures.

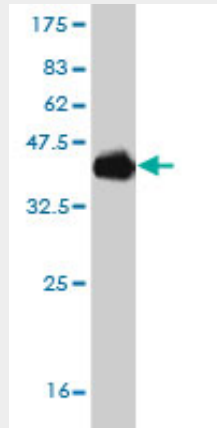
POU6F2 Antibody (monoclonal) (M08) - Protocols

Provided below are standard protocols that you may find useful for product applications.

- [Western Blot](#)
- [Blocking Peptides](#)
- [Dot Blot](#)

- [Immunohistochemistry](#)
- [Immunofluorescence](#)
- [Immunoprecipitation](#)
- [Flow Cytometry](#)
- [Cell Culture](#)

POU6F2 Antibody (monoclonal) (M08) - Images



Antibody Reactive Against Recombinant Protein. Western Blot detection against Immunogen (35.2 kDa).

POU6F2 Antibody (monoclonal) (M08) - Background

This gene encodes a member of the POU protein family characterized by the presence of a bipartite DNA binding domain, consisting of a POU-specific domain and a homeodomain, separated by a variable polylinker. The DNA binding domain may bind to DNA as monomers or as homo- and/or heterodimers, in a sequence-specific manner. The POU family members are transcriptional regulators, many of which are known to control cell type-specific differentiation pathways. This gene is a tumor suppressor involved in Wilms tumor (WT) predisposition. Alternatively spliced transcript variants encoding distinct isoforms have been found for this gene.

POU6F2 Antibody (monoclonal) (M08) - References

A genome-wide scan for common alleles affecting risk for autism. Anney R, et al. Hum Mol Genet, 2010 Aug 16. PMID 20663923. Personalized smoking cessation: interactions between nicotine dose, dependence and quit-success genotype score. Rose JE, et al. Mol Med, 2010 Jul-Aug. PMID 20379614. Human variation in alcohol response is influenced by variation in neuronal signaling genes. Joslyn G, et al. Alcohol Clin Exp Res, 2010 May. PMID 20201926. Toward a confocal subcellular atlas of the human proteome. Barbe L, et al. Mol Cell Proteomics, 2008 Mar. PMID 18029348. The murine Pou6f2 gene is temporally and spatially regulated during kidney embryogenesis and its human homolog is overexpressed in a subset of Wilms tumors. Di Renzo F, et al. J Pediatr Hematol Oncol, 2006 Dec. PMID 17164647.