

**POLR2H Antibody (monoclonal) (M01)**

Mouse monoclonal antibody raised against a full length recombinant POLR2H.

Catalog # AT3376a

**Specification**

---

**POLR2H Antibody (monoclonal) (M01) - Product Information**

Application	WB, E
Primary Accession	<a href="#">P52434</a>
Other Accession	<a href="#">BC000739</a>
Reactivity	Human
Host	mouse
Clonality	Monoclonal
Isotype	IgG1 Kappa
Calculated MW	17143

**POLR2H Antibody (monoclonal) (M01) - Additional Information**

Gene ID 5437

**Other Names**

DNA-directed RNA polymerases I, II, and III subunit RPABC3, RNA polymerases I, II, and III subunit ABC3, DNA-directed RNA polymerase II subunit H, DNA-directed RNA polymerases I, II, and III 171 kDa polypeptide, RPB17, RPB8 homolog, hRPB8, POLR2H

**Target/Specificity**

POLR2H (AAH00739, 1 a.a. ~ 150 a.a) full-length recombinant protein with GST tag. MW of the GST tag alone is 26 KDa.

**Dilution**

WB~~1:500~1000

**Format**

Clear, colorless solution in phosphate buffered saline, pH 7.2 .

**Storage**

Store at -20°C or lower. Aliquot to avoid repeated freezing and thawing.

**Precautions**

POLR2H Antibody (monoclonal) (M01) is for research use only and not for use in diagnostic or therapeutic procedures.

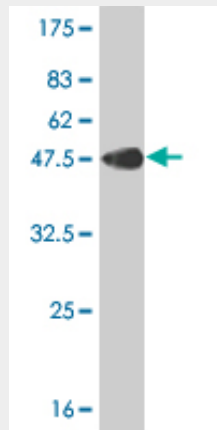
**POLR2H Antibody (monoclonal) (M01) - Protocols**

Provided below are standard protocols that you may find useful for product applications.

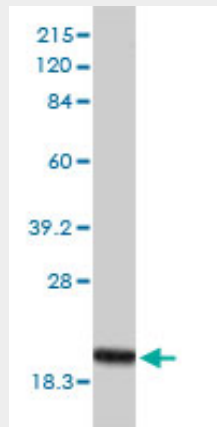
- [Western Blot](#)
- [Blocking Peptides](#)

- [Dot Blot](#)
- [Immunohistochemistry](#)
- [Immunofluorescence](#)
- [Immunoprecipitation](#)
- [Flow Cytometry](#)
- [Cell Culture](#)

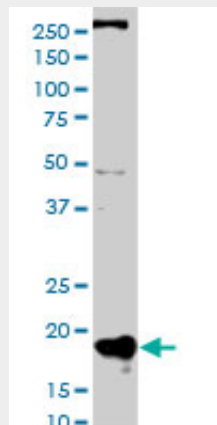
### **POLR2H Antibody (monoclonal) (M01) - Images**



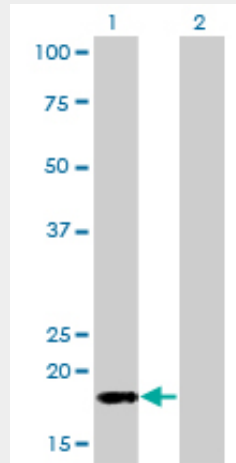
Antibody Reactive Against Recombinant Protein. Western Blot detection against Immunogen (42.24 KDa) .



POLR2H monoclonal antibody (M01), clone 3G6-1A4 Western Blot analysis of POLR2H expression in HeLa ( (Cat # AT3376a )

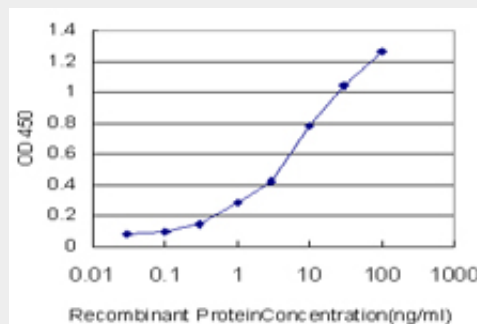


POLR2H monoclonal antibody (M01), clone 3G6-1A4. Western Blot analysis of POLR2H expression in HepG2 (Cat # AT3376a)



Western Blot analysis of POLR2H expression in transfected 293T cell line by POLR2H monoclonal antibody (M01), clone 3G6-1A4.

Lane 1: POLR2H transfected lysate(17.1 KDa).  
 Lane 2: Non-transfected lysate.



Detection limit for recombinant GST tagged POLR2H is approximately 0.3ng/ml as a capture antibody.

### **POLR2H Antibody (monoclonal) (M01) - Background**

This gene encodes one of the essential subunits of RNA polymerase II that is shared by the other two eukaryotic DNA-directed RNA polymerases, I and III.

### **POLR2H Antibody (monoclonal) (M01) - References**

1.Examining the Complexity of Human RNA Polymerase Complexes using HaloTag Technology Coupled to Label Free Quantitative Proteomics. Daniels DL, Mendez J, Mosley AL, Ramisetty SR, Murphy N, Benink H, Wood KV, Urh M, Washburn MP.J Proteome Res. 2012 Jan 3.