

PLTP Antibody (monoclonal) (M01)

Mouse monoclonal antibody raised against a full length recombinant PLTP.

Catalog # AT3351a

Specification

PLTP Antibody (monoclonal) (M01) - Product Information

Application	WB, IHC
Primary Accession	P55058
Other Accession	BC005045
Reactivity	Human
Host	mouse
Clonality	Monoclonal
Isotype	IgG1 kappa
Calculated MW	54739

PLTP Antibody (monoclonal) (M01) - Additional Information

Gene ID 5360

Other Names

Phospholipid transfer protein, Lipid transfer protein II, PLTP

Target/Specificity

PLTP (AAH05045, 19 a.a. ~ 441 a.a) full-length recombinant protein with GST tag. MW of the GST tag alone is 26 KDa.

Dilution

WB~~1:500~1000

Format

Clear, colorless solution in phosphate buffered saline, pH 7.2 .

Storage

Store at -20°C or lower. Aliquot to avoid repeated freezing and thawing.

Precautions

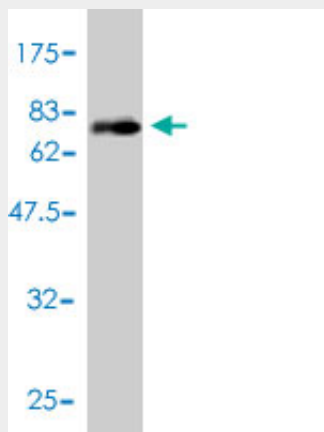
PLTP Antibody (monoclonal) (M01) is for research use only and not for use in diagnostic or therapeutic procedures.

PLTP Antibody (monoclonal) (M01) - Protocols

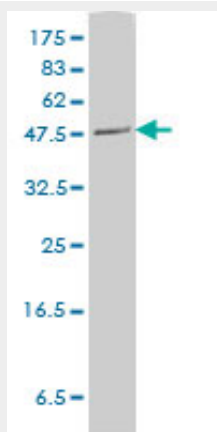
Provided below are standard protocols that you may find useful for product applications.

- [Western Blot](#)
- [Blocking Peptides](#)
- [Dot Blot](#)
- [Immunohistochemistry](#)

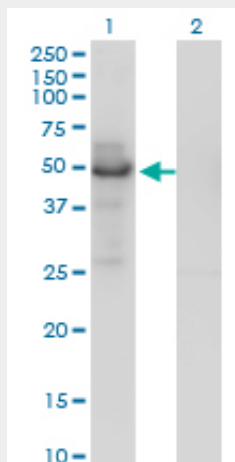
- [Immunofluorescence](#)
- [Immunoprecipitation](#)
- [Flow Cytometry](#)
- [Cell Culture](#)

PLTP Antibody (monoclonal) (M01) - Images

Antibody Reactive Against Recombinant Protein. Western Blot detection against Immunogen (72.05 KDa) .

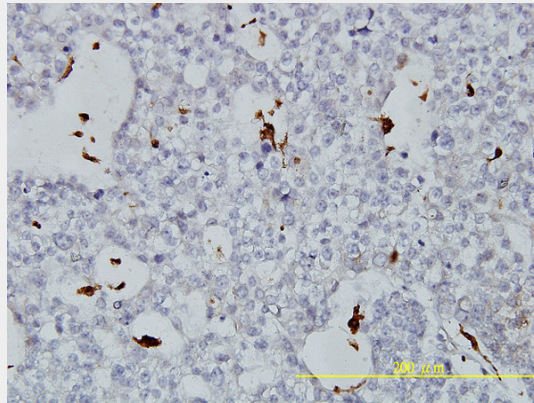


PLTP monoclonal antibody (M01), clone 2F3-G4 Western Blot analysis of PLTP expression in HeLa S3 NE ((Cat # AT3351a)



Western Blot analysis of PLTP expression in transfected 293T cell line by PLTP monoclonal antibody (M01), clone 2F3-G4.

Lane 1: PLTP transfected lysate(54.7 KDa).
Lane 2: Non-transfected lysate.



Immunoperoxidase of monoclonal antibody to PLTP on formalin-fixed paraffin-embedded human ovary, clear cell carcinoma tissue. [antibody concentration 5 ug/ml]

PLTP Antibody (monoclonal) (M01) - Background

The protein encoded by this gene is one of at least two lipid transfer proteins found in human plasma. The encoded protein transfers phospholipids from triglyceride-rich lipoproteins to high density lipoprotein (HDL). In addition to regulating the size of HDL particles, this protein may be involved in cholesterol metabolism. At least two transcript variants encoding different isoforms have been found for this gene.

PLTP Antibody (monoclonal) (M01) - References

1.Increased Biglycan in Aortic Valve Stenosis Leads to the Overexpression of Phospholipid Transfer Protein via Toll-Like Receptor 2.Derbali H, Bosse Y, Cote N, Pibarot P, Audet A, Pepin A, Arsenault B, Couture C, Despres JP, Mathieu P.Am J Pathol. 2010 Jun;176(6):2638-45. Epub 2010 Apr 9.