

PLK1 Antibody (monoclonal) (M01)

Mouse monoclonal antibody raised against a full length recombinant PLK1.

Catalog # AT3344a

Specification

PLK1 Antibody (monoclonal) (M01) - Product Information

Application	IF, IP, WB, E
Primary Accession	P53350
Other Accession	BC002369
Reactivity	Human
Host	mouse
Clonality	Monoclonal
Isotype	IgG1 kappa
Calculated MW	68255

PLK1 Antibody (monoclonal) (M01) - Additional Information

Gene ID 5347

Other Names

Serine/threonine-protein kinase PLK1, Polo-like kinase 1, PLK-1, Serine/threonine-protein kinase 13, STPK13, PLK1, PLK

Target/Specificity

PLK1 (AAH02369, 1 a.a. ~ 603 a.a) full-length recombinant protein with GST tag. MW of the GST tag alone is 26 KDa.

Dilution

WB~~1:500~1000

Format

Clear, colorless solution in phosphate buffered saline, pH 7.2 .

Storage

Store at -20°C or lower. Aliquot to avoid repeated freezing and thawing.

Precautions

PLK1 Antibody (monoclonal) (M01) is for research use only and not for use in diagnostic or therapeutic procedures.

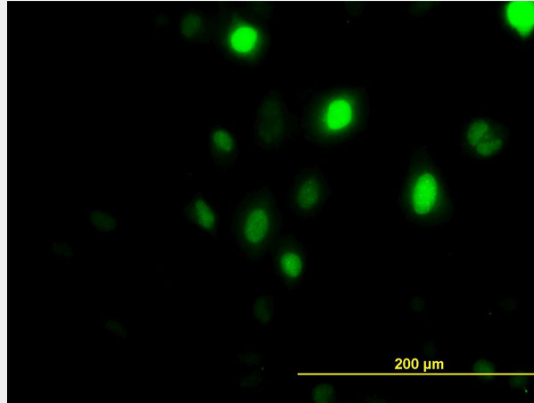
PLK1 Antibody (monoclonal) (M01) - Protocols

Provided below are standard protocols that you may find useful for product applications.

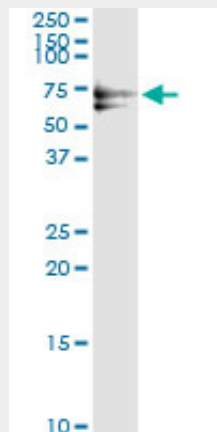
- [Western Blot](#)
- [Blocking Peptides](#)
- [Dot Blot](#)

- [Immunohistochemistry](#)
- [Immunofluorescence](#)
- [Immunoprecipitation](#)
- [Flow Cytometry](#)
- [Cell Culture](#)

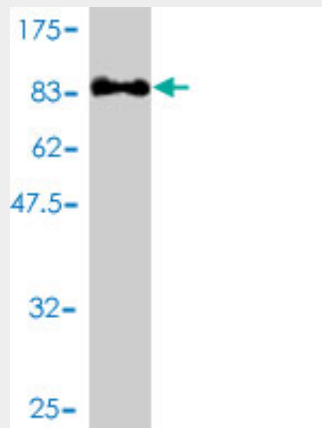
PLK1 Antibody (monoclonal) (M01) - Images



Immunofluorescence of monoclonal antibody to PLK1 on HeLa cell. [antibody concentration 10 ug/ml]

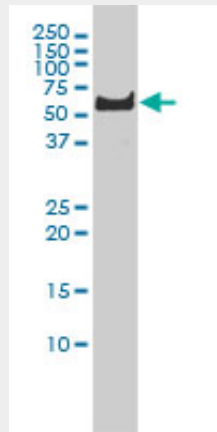


Immunoprecipitation of PLK1 transfected lysate using anti-PLK1 monoclonal antibody and Protein A Magnetic Bead ([U0007](#)), and immunoblotted with PLK1 MaxPab rabbit polyclonal antibody.

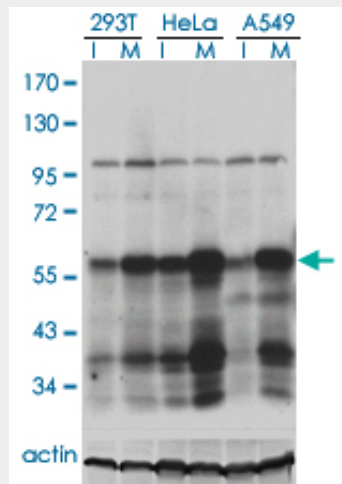


Antibody Reactive Against Recombinant Protein. Western Blot detection against Immunogen

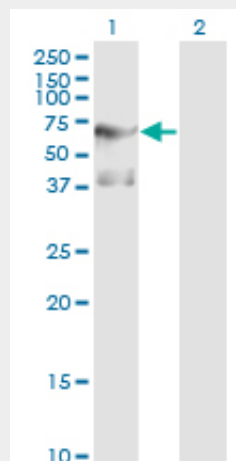
(91.85 KDa) .



PLK1 monoclonal antibody (M01), clone 2G12 Western Blot analysis of PLK1 expression in HeLa S3 NE ((Cat # AT3344a)

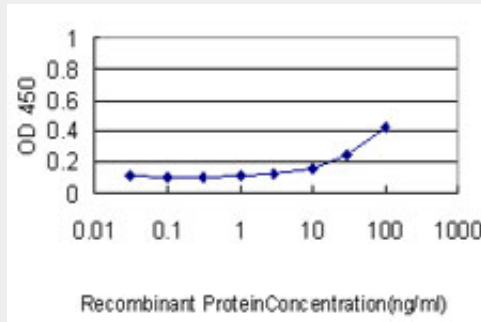


Western blot analysis of PLK1 in extracts from 293T, HeLa and A549 cell using anti-PLK1 monoclonal antibody.



Western Blot analysis of PLK1 expression in transfected 293T cell line by PLK1 monoclonal antibody (M01), clone 2G12.

Lane 1: PLK1 transfected lysate(68.3 KDa).
 Lane 2: Non-transfected lysate.



Detection limit for recombinant GST tagged PLK1 is approximately 1ng/ml as a capture antibody.

PLK1 Antibody (monoclonal) (M01) - References

Polo-like kinase 1 is involved in hepatitis C virus replication by hyperphosphorylating NS5A. Chen YC, et al. J Virol, 2010 Aug. PMID 20534861. Centrobilin/NIP2 is a microtubule stabilizer whose activity is enhanced by PLK1 phosphorylation during mitosis. Lee J, et al. J Biol Chem, 2010 Aug 13. PMID 20511645. Centrosome-related genes, genetic variation, and risk of breast cancer. Olson JE, et al. Breast Cancer Res Treat, 2010 May 28. PMID 20508983. Liaisons between survivin and Plk1 during cell division and cell death. Colnaghi R, et al. J Biol Chem, 2010 Jul 16. PMID 20427271. A functional link between polo-like kinase 1 and the mammalian target-of-rapamycin pathway? Renner AG, et al. Cell Cycle, 2010 May. PMID 20404504.