

PLA2G7 Antibody (monoclonal) (M02)

Mouse monoclonal antibody raised against a full length recombinant PLA2G7.

Catalog # AT3332a

Specification

PLA2G7 Antibody (monoclonal) (M02) - Product Information

Application	E
Primary Accession	O13093
Other Accession	BC038452
Reactivity	Human
Host	mouse
Clonality	Monoclonal
Isotype	IgG3 Kappa
Calculated MW	50077

PLA2G7 Antibody (monoclonal) (M02) - Additional Information

Gene ID 7941

Other Names

Platelet-activating factor acetylhydrolase, PAF acetylhydrolase, 1-alkyl-2-acetyl-glycerophosphocholine esterase, 2-acetyl-1-alkyl-glycerophosphocholine esterase, Group-VIIA phospholipase A2, gVIIA-PLA2, LDL-associated phospholipase A2, LDL-PLA(2), PAF 2-acylhydrolase, PLA2G7, PAFAH

Target/Specificity

PLA2G7 (AAH38452.1, 22 a.a. ~ 441 a.a) full-length recombinant protein with GST tag. MW of the GST tag alone is 26 KDa.

Format

Clear, colorless solution in phosphate buffered saline, pH 7.2 .

Storage

Store at -20°C or lower. Aliquot to avoid repeated freezing and thawing.

Precautions

PLA2G7 Antibody (monoclonal) (M02) is for research use only and not for use in diagnostic or therapeutic procedures.

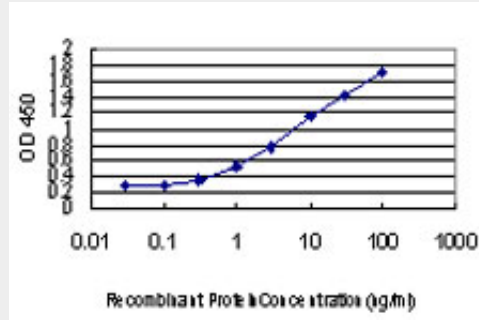
PLA2G7 Antibody (monoclonal) (M02) - Protocols

Provided below are standard protocols that you may find useful for product applications.

- [Western Blot](#)
- [Blocking Peptides](#)
- [Dot Blot](#)
- [Immunohistochemistry](#)

- [Immunofluorescence](#)
- [Immunoprecipitation](#)
- [Flow Cytometry](#)
- [Cell Culture](#)

PLA2G7 Antibody (monoclonal) (M02) - Images



Detection limit for recombinant GST tagged PLA2G7 is approximately 0.3ng/ml as a capture antibody.

PLA2G7 Antibody (monoclonal) (M02) - Background

The protein encoded by this gene is a secreted enzyme that catalyzes the degradation of platelet-activating factor to biologically inactive products. Defects in this gene are a cause of platelet-activating factor acetylhydrolase deficiency. Two transcript variants encoding the same protein have been found for this gene.

PLA2G7 Antibody (monoclonal) (M02) - References

1. EXTRACELLULAR AND MEMBRANE-ASSOCIATED PROSTATE CANCER MARKERS Klee, George G.; Vasmatzis, George; Kosari, Farhad; Klee, Eric W. FreshPatents.com