

PITX1 Antibody (monoclonal) (M02)

Mouse monoclonal antibody raised against a partial recombinant PITX1.

Catalog # AT3320a

Specification

PITX1 Antibody (monoclonal) (M02) - Product Information

Application	WB, E
Primary Accession	P78337
Other Accession	NM_002653
Reactivity	Human
Host	mouse
Clonality	Monoclonal
Isotype	IgG2a Kappa
Calculated MW	34128

PITX1 Antibody (monoclonal) (M02) - Additional Information

Gene ID 5307

Other Names

Pituitary homeobox 1, Hindlimb-expressed homeobox protein backfoot, Homeobox protein PITX1, Paired-like homeodomain transcription factor 1, PITX1, BFT, PTX1

Target/Specificity

PITX1 (NP_002644, 225 a.a. ~ 313 a.a) partial recombinant protein with GST tag. MW of the GST tag alone is 26 KDa.

Dilution

WB~~1:500~1000

Format

Clear, colorless solution in phosphate buffered saline, pH 7.2 .

Storage

Store at -20°C or lower. Aliquot to avoid repeated freezing and thawing.

Precautions

PITX1 Antibody (monoclonal) (M02) is for research use only and not for use in diagnostic or therapeutic procedures.

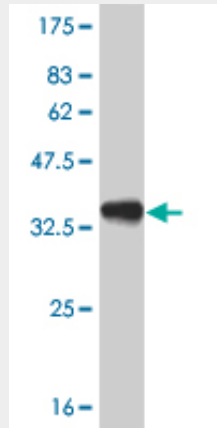
PITX1 Antibody (monoclonal) (M02) - Protocols

Provided below are standard protocols that you may find useful for product applications.

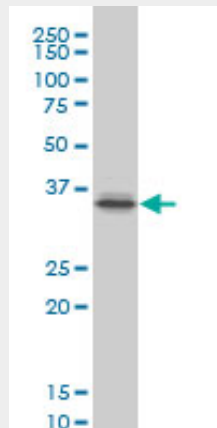
- [Western Blot](#)
- [Blocking Peptides](#)
- [Dot Blot](#)

- [Immunohistochemistry](#)
- [Immunofluorescence](#)
- [Immunoprecipitation](#)
- [Flow Cytometry](#)
- [Cell Culture](#)

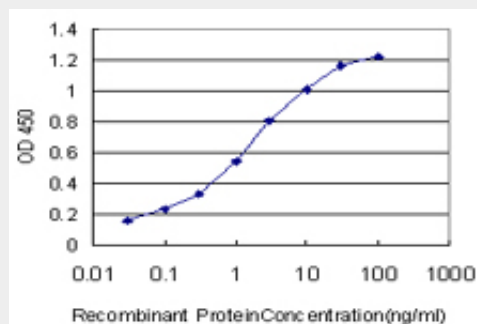
PITX1 Antibody (monoclonal) (M02) - Images



Antibody Reactive Against Recombinant Protein. Western Blot detection against Immunogen (35.53 KDa) .



PITX1 monoclonal antibody (M02), clone 6D4 Western Blot analysis of PITX1 expression in A-431 (Cat # AT3320a)



Detection limit for recombinant GST tagged PITX1 is approximately 0.03ng/ml as a capture antibody.

PITX1 Antibody (monoclonal) (M02) - Background

This gene encodes a member of the RIEG/PITX homeobox family, which is in the bicoid class of homeodomain proteins. Members of this family are involved in organ development and left-right asymmetry. This protein acts as a transcriptional regulator involved in basal and hormone-regulated activity of prolactin.

PITX1 Antibody (monoclonal) (M02) - References

1. The c-Abl tyrosine kinase stabilizes Pitx1 in the apoptotic response to DNA damage. Yamaguchi T, Miki Y, Yoshida K. *Apoptosis*. 2010 Aug;15(8):927-35.