

PITX1 Antibody (monoclonal) (M01)

Mouse monoclonal antibody raised against a partial recombinant PITX1.

Catalog # AT3319a

Specification

PITX1 Antibody (monoclonal) (M01) - Product Information

| | |
|-------------------|---------------------------|
| Application | IP, WB, E |
| Primary Accession | P78337 |
| Other Accession | NM_002653 |
| Reactivity | Human |
| Host | Mouse |
| Clonality | Monoclonal |
| Isotype | IgG2a Kappa |
| Calculated MW | 34128 |

PITX1 Antibody (monoclonal) (M01) - Additional Information

Gene ID 5307

Other Names

Pituitary homeobox 1, Hindlimb-expressed homeobox protein backfoot, Homeobox protein PITX1, Paired-like homeodomain transcription factor 1, PITX1, BFT, PTX1

Target/Specificity

PITX1 (NP_002644, 225 a.a. ~ 313 a.a) partial recombinant protein with GST tag. MW of the GST tag alone is 26 KDa.

Dilution

WB~~1:500~1000

Format

Clear, colorless solution in phosphate buffered saline, pH 7.2 .

Storage

Store at -20°C or lower. Aliquot to avoid repeated freezing and thawing.

Precautions

PITX1 Antibody (monoclonal) (M01) is for research use only and not for use in diagnostic or therapeutic procedures.

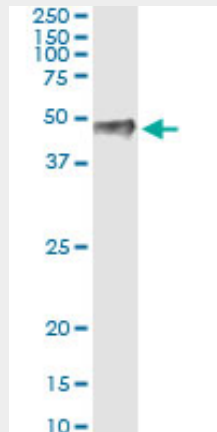
PITX1 Antibody (monoclonal) (M01) - Protocols

Provided below are standard protocols that you may find useful for product applications.

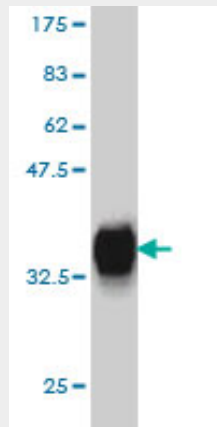
- [Western Blot](#)
- [Blocking Peptides](#)
- [Dot Blot](#)

- [Immunohistochemistry](#)
- [Immunofluorescence](#)
- [Immunoprecipitation](#)
- [Flow Cytometry](#)
- [Cell Culture](#)

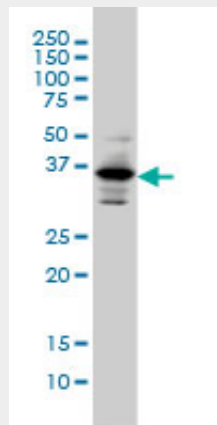
PITX1 Antibody (monoclonal) (M01) - Images



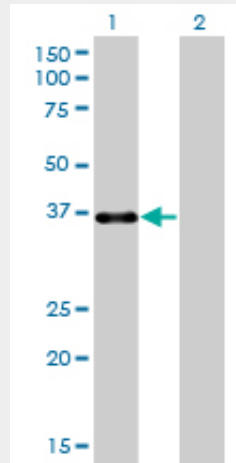
Immunoprecipitation of PITX1 transfected lysate using anti-PITX1 monoclonal antibody and Protein A Magnetic Bead ([U0007](#)), and immunoblotted with PITX1 MaxPab rabbit polyclonal antibody.



Antibody Reactive Against Recombinant Protein. Western Blot detection against Immunogen (35.53 KDa) .

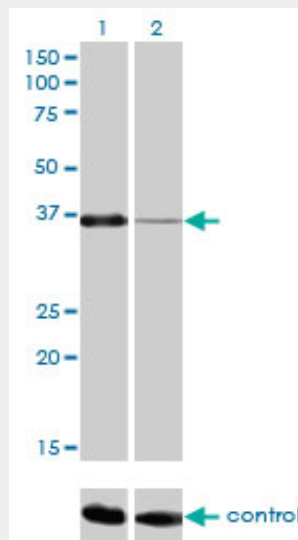


PITX1 monoclonal antibody (M01), clone 5G4 Western Blot analysis of PITX1 expression in Hela S3 NE ((Cat # AT3319a)

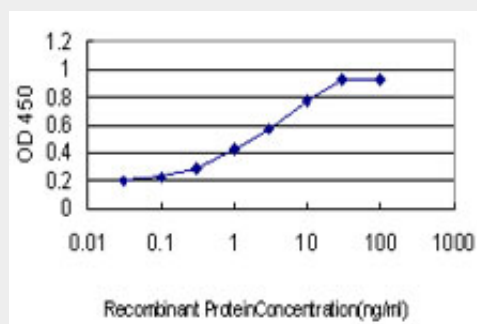


Western Blot analysis of PITX1 expression in transfected 293T cell line by PITX1 monoclonal antibody (M01), clone 5G4.

Lane 1: PITX1 transfected lysate(34.1 KDa).
 Lane 2: Non-transfected lysate.



Western blot analysis of PITX1 over-expressed 293 cell line, cotransfected with PITX1 Validated Chimera RNAi ((Cat # AT3319a)



Detection limit for recombinant GST tagged PITX1 is approximately 0.03ng/ml as a capture

antibody.

PITX1 Antibody (monoclonal) (M01) - Background

This gene encodes a member of the RIEG/PITX homeobox family, which is in the bicoid class of homeodomain proteins. Members of this family are involved in organ development and left-right asymmetry. This protein acts as a transcriptional regulator involved in basal and hormone-regulated activity of prolactin.

PITX1 Antibody (monoclonal) (M01) - References

1.The c-Abl tyrosine kinase stabilizes Pitx1 in the apoptotic response to DNA damage.Yamaguchi T, Miki Y, Yoshida K.Apoptosis. 2010 Aug;15(8):927-35.2.Transcriptional activation of p53 by Pitx1.Liu DX, Lobie PE.Cell Death Differ. 2007 Nov;14(11):1893-907. Epub 2007 Aug 31.