

PITPNA Antibody (monoclonal) (M01)

Mouse monoclonal antibody raised against a partial recombinant PITPNA.

Catalog # AT3318a

Specification

PITPNA Antibody (monoclonal) (M01) - Product Information

Application	WB, E
Primary Accession	Q00169
Other Accession	NM_006224
Reactivity	Human, Mouse, Rat
Host	mouse
Clonality	Monoclonal
Isotype	IgG2a Kappa
Calculated MW	31806

PITPNA Antibody (monoclonal) (M01) - Additional Information

Gene ID 5306

Other Names

Phosphatidylinositol transfer protein alpha isoform, PI-TP-alpha, PtdIns transfer protein alpha, PtdInsTP alpha, PITPNA, PITPN

Target/Specificity

PITPNA (NP_006215.1, 171 a.a. ~ 270 a.a) partial recombinant protein with GST tag. MW of the GST tag alone is 26 KDa.

Dilution

WB~~1:500~1000

Format

Clear, colorless solution in phosphate buffered saline, pH 7.2 .

Storage

Store at -20°C or lower. Aliquot to avoid repeated freezing and thawing.

Precautions

PITPNA Antibody (monoclonal) (M01) is for research use only and not for use in diagnostic or therapeutic procedures.

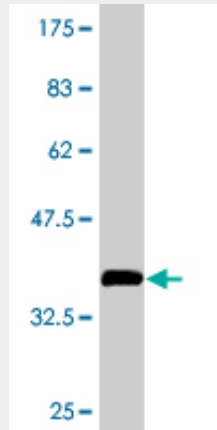
PITPNA Antibody (monoclonal) (M01) - Protocols

Provided below are standard protocols that you may find useful for product applications.

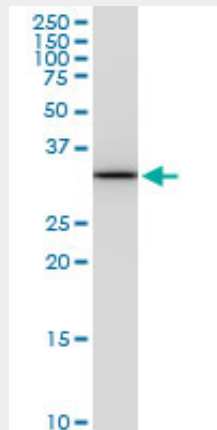
- [Western Blot](#)
- [Blocking Peptides](#)
- [Dot Blot](#)

- [Immunohistochemistry](#)
- [Immunofluorescence](#)
- [Immunoprecipitation](#)
- [Flow Cytometry](#)
- [Cell Culture](#)

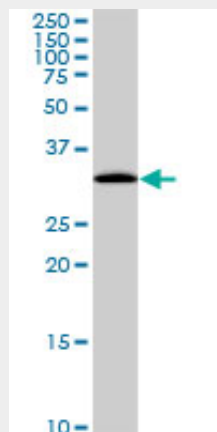
PITPNA Antibody (monoclonal) (M01) - Images



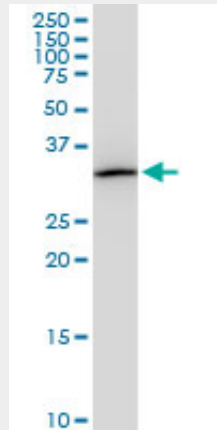
Antibody Reactive Against Recombinant Protein. Western Blot detection against Immunogen (36.74 KDa) .



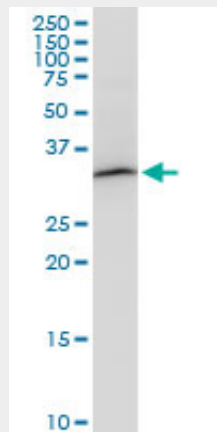
PITPNA monoclonal antibody (M01), clone 4G10. Western Blot analysis of PITPNA expression in PC-12 (Cat # AT3318a)



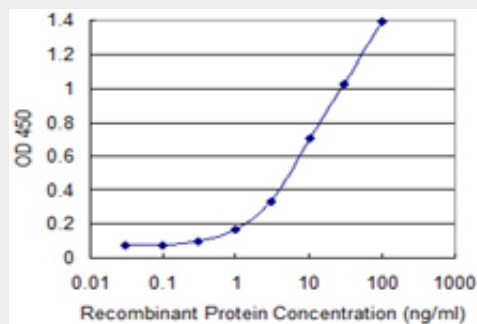
PITPNA monoclonal antibody (M01), clone 4G10. Western Blot analysis of PITPNA expression in HepG2 (Cat # AT3318a)



PITPNA monoclonal antibody (M01), clone 4G10. Western Blot analysis of PITPNA expression in Raw 264.7 (Cat # AT3318a)



PITPNA monoclonal antibody (M01), clone 4G10. Western Blot analysis of PITPNA expression in NIH/3T3 (Cat # AT3318a)



Detection limit for recombinant GST tagged PITPNA is 0.1 ng/ml as a capture antibody.

PITPNA Antibody (monoclonal) (M01) - Background

This gene encodes a member of a family of lipid-binding proteins that transfer molecules of phosphatidylinositol or phosphatidylcholine between membrane surfaces. The protein is implicated in phospholipase C signaling and in the production of phosphatidylinositol 3,4,5-trisphosphate (PIP3) by phosphoinositide-3-kinase.

PITPNA Antibody (monoclonal) (M01) - References

Proteome analysis of the thalamus and cerebrospinal fluid reveals glycolysis dysfunction and potential biomarkers candidates for schizophrenia. Martins-de-Souza D, et al. J Psychiatr Res, 2010 May 14. PMID 20471030. Toward a confocal subcellular atlas of the human proteome. Barbe L, et al. Mol Cell Proteomics, 2008 Mar. PMID 18029348. Violating the splicing rules: TG dinucleotides function as alternative 3' splice sites in U2-dependent introns. Szafranski K, et al. Genome Biol, 2007. PMID 17672918. Large-scale mapping of human protein-protein interactions by mass spectrometry. Ewing RM, et al. Mol Syst Biol, 2007. PMID 17353931. Phosphatidylinositol transfer protein-alpha in netrin-1-induced PLC signalling and neurite outgrowth. Xie Y, et al. Nat Cell Biol, 2005 Nov. PMID 16244667.