

## **PIN1 Antibody (monoclonal) (M02)**

Mouse monoclonal antibody raised against a partial recombinant PIN1.

Catalog # AT3313a

### **Specification**

---

#### **PIN1 Antibody (monoclonal) (M02) - Product Information**

Application	WB, E
Primary Accession	<a href="#">O13526</a>
Other Accession	<a href="#">BC002899</a>
Reactivity	Human
Host	mouse
Clonality	Monoclonal
Isotype	IgG1 kappa
Calculated MW	18243

#### **PIN1 Antibody (monoclonal) (M02) - Additional Information**

**Gene ID** 5300

#### **Other Names**

Peptidyl-prolyl cis-trans isomerase NIMA-interacting 1, Peptidyl-prolyl cis-trans isomerase Pin1, PPIase Pin1, Rotamase Pin1, PIN1

#### **Target/Specificity**

PIN1 (AAH02899, 64 a.a. ~ 163 a.a) partial recombinant protein with GST tag. MW of the GST tag alone is 26 KDa.

#### **Dilution**

WB~~1:500~1000

#### **Format**

Clear, colorless solution in phosphate buffered saline, pH 7.2 .

#### **Storage**

Store at -20°C or lower. Aliquot to avoid repeated freezing and thawing.

#### **Precautions**

PIN1 Antibody (monoclonal) (M02) is for research use only and not for use in diagnostic or therapeutic procedures.

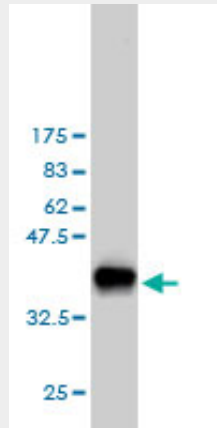
#### **PIN1 Antibody (monoclonal) (M02) - Protocols**

Provided below are standard protocols that you may find useful for product applications.

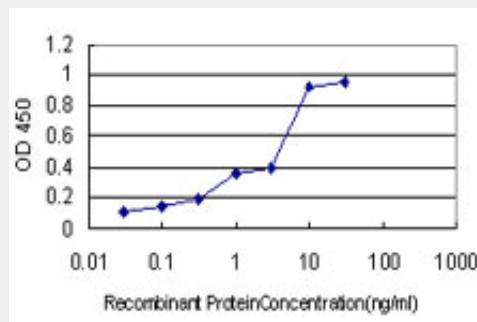
- [Western Blot](#)
- [Blocking Peptides](#)
- [Dot Blot](#)

- [Immunohistochemistry](#)
- [Immunofluorescence](#)
- [Immunoprecipitation](#)
- [Flow Cytometry](#)
- [Cell Culture](#)

### **PIN1 Antibody (monoclonal) (M02) - Images**



Antibody Reactive Against Recombinant Protein. Western Blot detection against Immunogen (36.63 KDa) .



Detection limit for recombinant GST tagged PIN1 is approximately 0.1ng/ml as a capture antibody.

### **PIN1 Antibody (monoclonal) (M02) - Background**

Peptidyl-prolyl cis/trans isomerases (PPIases; EC 5.2.1.8), such as PIN1, catalyze the cis/trans isomerization of peptidyl-prolyl peptide bonds. PIN1 is the only PPIase that specifically binds to phosphorylated ser/thr-pro motifs to catalytically regulate the post-phosphorylation conformation of its substrates. PIN1-catalyzed conformational regulation has a profound impact on key proteins involved in the regulation of cell growth, genotoxic and other stress responses, the immune response, germ cell development, neuronal differentiation, and survival (review by Lu and Zhou, 2007 [PubMed 17878917]).

### **PIN1 Antibody (monoclonal) (M02) - References**

A PIN1 polymorphism that prevents its suppression by AP4 associates with delayed onset of Alzheimer's disease. Ma SL, et al. *Neurobiol Aging*, 2010 Jun 24. PMID 20580132. Uncoating of human immunodeficiency virus type 1 requires prolyl isomerase Pin1. Misumi S, et al. *J Biol Chem*, 2010 Aug 13. PMID 20529865. The prolyl isomerase Pin1 induces LC-3 expression and mediates tamoxifen resistance in breast cancer. Namgoong GM, et al. *J Biol Chem*, 2010 Jul 30. PMID 20479004. Elevated PIN1 expression by C/EBPalpha-p30 blocks C/EBPalpha-induced granulocytic

differentiation through c-Jun in AML. Pulikkan JA, et al. Leukemia, 2010 May. PMID 20376080. Membrane permeable cyclic peptidyl inhibitors against human Peptidylprolyl Isomerase Pin1. Liu T, et al. J Med Chem, 2010 Mar 25. PMID 20180533.