

**PHOSPHO1 Antibody (monoclonal) (M10)**

Mouse monoclonal antibody raised against a partial recombinant PHOSPHO1.

Catalog # AT3302a

**Specification**

---

**PHOSPHO1 Antibody (monoclonal) (M10) - Product Information**

Application	WB
Primary Accession	<a href="#">Q8TCT1</a>
Other Accession	<a href="#">NM_178500</a>
Reactivity	Human, Rat
Host	mouse
Clonality	Monoclonal
Isotype	IgG1 Kappa
Calculated MW	29713

**PHOSPHO1 Antibody (monoclonal) (M10) - Additional Information**

Gene ID 162466

**Other Names**

Phosphoethanolamine/phosphocholine phosphatase, PHOSPHO1

**Target/Specificity**

PHOSPHO1 (NP\_848595, 168 a.a. ~ 266 a.a) partial recombinant protein with GST tag. MW of the GST tag alone is 26 KDa.

**Dilution**

WB~~1:500~1000

**Format**

Clear, colorless solution in phosphate buffered saline, pH 7.2 .

**Storage**

Store at -20°C or lower. Aliquot to avoid repeated freezing and thawing.

**Precautions**

PHOSPHO1 Antibody (monoclonal) (M10) is for research use only and not for use in diagnostic or therapeutic procedures.

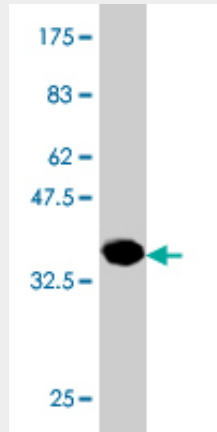
**PHOSPHO1 Antibody (monoclonal) (M10) - Protocols**

Provided below are standard protocols that you may find useful for product applications.

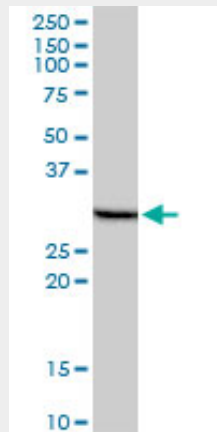
- [Western Blot](#)
- [Blocking Peptides](#)
- [Dot Blot](#)
- [Immunohistochemistry](#)

- [Immunofluorescence](#)
- [Immunoprecipitation](#)
- [Flow Cytometry](#)
- [Cell Culture](#)

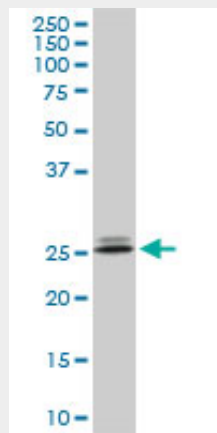
### PHOSPHO1 Antibody (monoclonal) (M10) - Images



Antibody Reactive Against Recombinant Protein. Western Blot detection against Immunogen (36.63 KDa) .

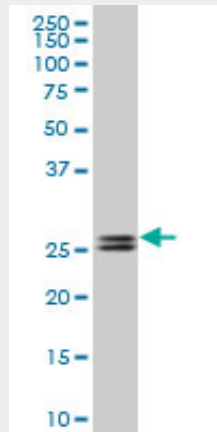


PHOSPHO1 monoclonal antibody (M10), clone 1A11. Western Blot analysis of PHOSPHO1 expression in human liver.



PHOSPHO1 monoclonal antibody (M10), clone 1A11. Western Blot analysis of PHOSPHO1

expression in PC-12 ( (Cat # AT3302a )



PHOSPHO1 monoclonal antibody (M10), clone 1A11. Western Blot analysis of PHOSPHO1 expression in Jurkat ( (Cat # AT3302a )

#### **PHOSPHO1 Antibody (monoclonal) (M10) - References**

High-density association study of 383 candidate genes for volumetric BMD at the femoral neck and lumbar spine among older men. Yerges LM, et al. J Bone Miner Res, 2009 Dec. PMID 19453261. Identification of a novel splice variant of the haloacid dehalogenase: PHOSPHO1. Roberts SJ, et al. Biochem Biophys Res Commun, 2008 Jul 11. PMID 18471996. Probing the substrate specificities of human PHOSPHO1 and PHOSPHO2. Roberts SJ, et al. Biochim Biophys Acta, 2005 Aug 31. PMID 16054448. The status, quality, and expansion of the NIH full-length cDNA project: the Mammalian Gene Collection (MGC). Gerhard DS, et al. Genome Res, 2004 Oct. PMID 15489334. Human PHOSPHO1 exhibits high specific phosphoethanolamine and phosphocholine phosphatase activities. Roberts SJ, et al. Biochem J, 2004 Aug 15. PMID 15175005.