

PHOSPHO1 Antibody (monoclonal) (M04)

Mouse monoclonal antibody raised against a partial recombinant PHOSPHO1.

Catalog # AT3301a

Specification

PHOSPHO1 Antibody (monoclonal) (M04) - Product Information

Application	WB, E
Primary Accession	Q8TCT1
Other Accession	NM_178500
Reactivity	Human, Rat
Host	mouse
Clonality	Monoclonal
Isotype	IgG1 Kappa
Calculated MW	29713

PHOSPHO1 Antibody (monoclonal) (M04) - Additional Information**Gene ID** 162466**Other Names**

Phosphoethanolamine/phosphocholine phosphatase, PHOSPHO1

Target/Specificity

PHOSPHO1 (NP_848595, 168 a.a. ~ 266 a.a) partial recombinant protein with GST tag. MW of the GST tag alone is 26 KDa.

Dilution

WB~~1:500~1000

Format

Clear, colorless solution in phosphate buffered saline, pH 7.2 .

Storage

Store at -20°C or lower. Aliquot to avoid repeated freezing and thawing.

Precautions

PHOSPHO1 Antibody (monoclonal) (M04) is for research use only and not for use in diagnostic or therapeutic procedures.

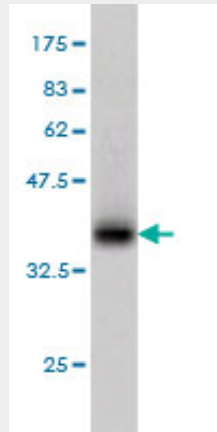
PHOSPHO1 Antibody (monoclonal) (M04) - Protocols

Provided below are standard protocols that you may find useful for product applications.

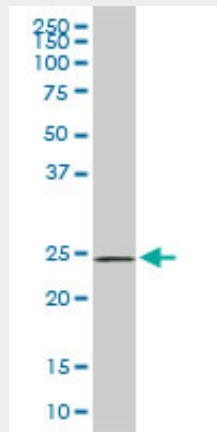
- [Western Blot](#)
- [Blocking Peptides](#)
- [Dot Blot](#)
- [Immunohistochemistry](#)

- [Immunofluorescence](#)
- [Immunoprecipitation](#)
- [Flow Cytometry](#)
- [Cell Culture](#)

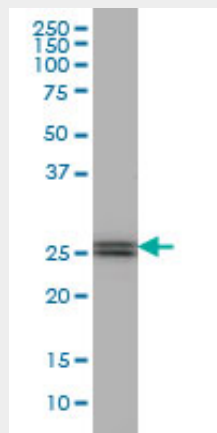
PHOSPHO1 Antibody (monoclonal) (M04) - Images



Antibody Reactive Against Recombinant Protein. Western Blot detection against Immunogen (36.63 KDa) .

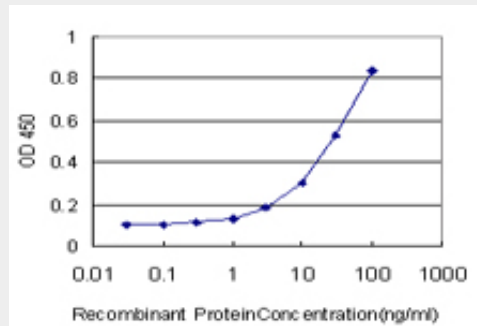


PHOSPHO1 monoclonal antibody (M04), clone 4B2. Western Blot analysis of PHOSPHO1 expression in PC-12 ((Cat # AT3301a)



PHOSPHO1 monoclonal antibody (M04), clone 4B2 Western Blot analysis of PHOSPHO1 expression

in Jurkat ((Cat # AT3301a)



Detection limit for recombinant GST tagged PHOSPHO1 is approximately 1ng/ml as a capture antibody.

PHOSPHO1 Antibody (monoclonal) (M04) - References

High-density association study of 383 candidate genes for volumetric BMD at the femoral neck and lumbar spine among older men. Yerges LM, et al. J Bone Miner Res, 2009 Dec. PMID 19453261. Identification of a novel splice variant of the haloacid dehalogenase: PHOSPHO1. Roberts SJ, et al. Biochem Biophys Res Commun, 2008 Jul 11. PMID 18471996. Probing the substrate specificities of human PHOSPHO1 and PHOSPHO2. Roberts SJ, et al. Biochim Biophys Acta, 2005 Aug 31. PMID 16054448. The status, quality, and expansion of the NIH full-length cDNA project: the Mammalian Gene Collection (MGC). Gerhard DS, et al. Genome Res, 2004 Oct. PMID 15489334. Human PHOSPHO1 exhibits high specific phosphoethanolamine and phosphocholine phosphatase activities. Roberts SJ, et al. Biochem J, 2004 Aug 15. PMID 15175005.