

**PGM1 Antibody (monoclonal) (M01)**

Mouse monoclonal antibody raised against a full length recombinant PGM1.

Catalog # AT3282a

**Specification**

---

**PGM1 Antibody (monoclonal) (M01) - Product Information**

Application	IF, IP, WB, E
Primary Accession	<a href="#">P36871</a>
Other Accession	<a href="#">BC019920</a>
Reactivity	Human
Host	mouse
Clonality	Monoclonal
Isotype	IgG1 kappa
Calculated MW	61449

**PGM1 Antibody (monoclonal) (M01) - Additional Information****Gene ID** 5236**Other Names**

Phosphoglucomutase-1, PGM 1, Glucose phosphomutase 1, PGM1

**Target/Specificity**

PGM1 (AAH19920, 1 a.a. ~ 562 a.a) full-length recombinant protein with GST tag. MW of the GST tag alone is 26 KDa.

**Dilution**

WB~~1:500~1000

**Format**

Clear, colorless solution in phosphate buffered saline, pH 7.2 .

**Storage**

Store at -20°C or lower. Aliquot to avoid repeated freezing and thawing.

**Precautions**

PGM1 Antibody (monoclonal) (M01) is for research use only and not for use in diagnostic or therapeutic procedures.

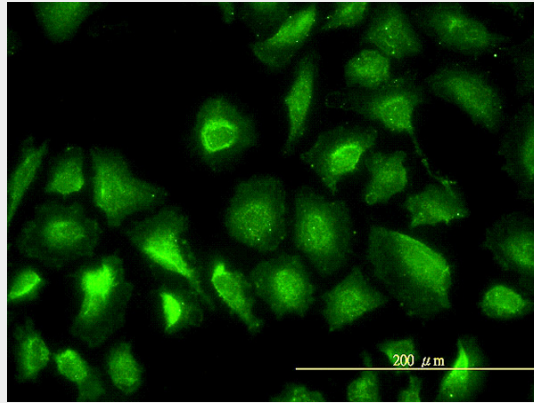
**PGM1 Antibody (monoclonal) (M01) - Protocols**

Provided below are standard protocols that you may find useful for product applications.

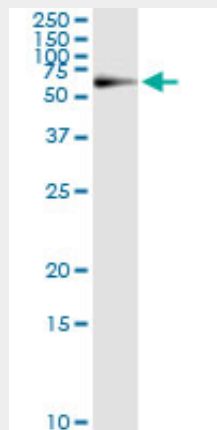
- [Western Blot](#)
- [Blocking Peptides](#)
- [Dot Blot](#)
- [Immunohistochemistry](#)

- [Immunofluorescence](#)
- [Immunoprecipitation](#)
- [Flow Cytometry](#)
- [Cell Culture](#)

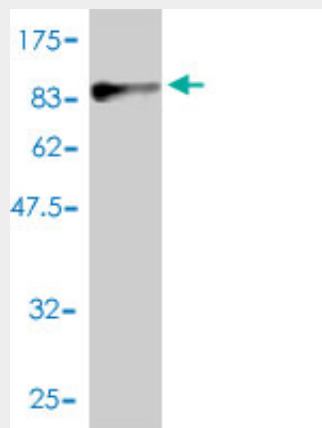
### PGM1 Antibody (monoclonal) (M01) - Images



Immunofluorescence of monoclonal antibody to PGM1 on HeLa cell. [antibody concentration 20 ug/ml]

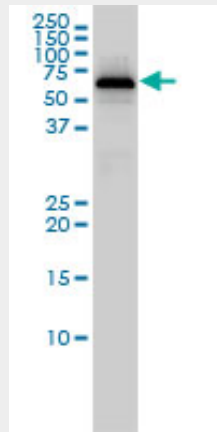


Immunoprecipitation of PGM1 transfected lysate using anti-PGM1 monoclonal antibody and Protein A Magnetic Bead ([U0007](#)), and immunoblotted with PGM1 MaxPab rabbit polyclonal antibody.

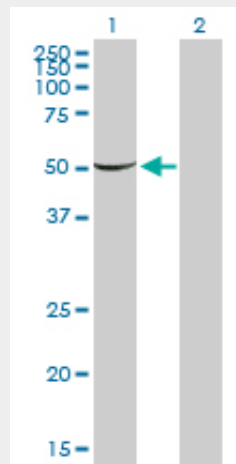


Antibody Reactive Against Recombinant Protein. Western Blot detection against Immunogen

(87.56 KDa) .



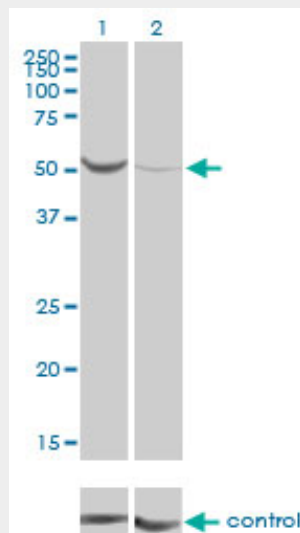
PGM1 monoclonal antibody (M01), clone 3B8-H4 Western Blot analysis of PGM1 expression in Jurkat ( (Cat # AT3282a )



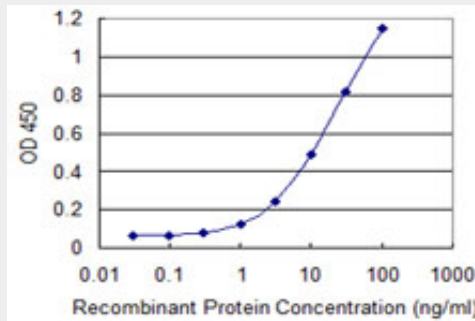
Western Blot analysis of PGM1 expression in transfected 293T cell line by PGM1 monoclonal antibody (M01), clone 3B8-H4.

Lane 1: PGM1 transfected lysate(61.4 KDa).

Lane 2: Non-transfected lysate.



Western blot analysis of PGM1 over-expressed 293 cell line, cotransfected with PGM1 Validated Chimera RNAi ( (Cat # AT3282a )



Detection limit for recombinant GST tagged PGM1 is 0.3 ng/ml as a capture antibody.

### **PGM1 Antibody (monoclonal) (M01) - Background**

The protein encoded by this gene is an isozyme of phosphoglucomutase (PGM) and belongs to the phosphohexose mutase family. There are several PGM isozymes, which are encoded by different genes and catalyze the transfer of phosphate between the 1 and 6 positions of glucose. In most cell types, this PGM isozyme is predominant, representing about 90% of total PGM activity. In red cells, PGM2 is a major isozyme. This gene is highly polymorphic. Mutations in this gene cause glycogen storage disease type 14. Alternativley spliced transcript variants encoding different isoforms have been identified in this gene.

### **PGM1 Antibody (monoclonal) (M01) - References**

1.Functional analysis of beef tenderness.Guillemin N, Bonnet M, Jurie C, Picard B.J Proteomics. 2011 Aug 9. [Epub ahead of print]