

PGEA1 Antibody (monoclonal) (M06)

Mouse monoclonal antibody raised against a partial recombinant CBY1.

Catalog # AT3280a

Specification

PGEA1 Antibody (monoclonal) (M06) - Product Information

Application	WB, E
Primary Accession	O9Y3M2
Other Accession	NM_015373
Reactivity	Human
Host	mouse
Clonality	Monoclonal
Isotype	IgG1 Kappa
Calculated MW	14470

PGEA1 Antibody (monoclonal) (M06) - Additional Information

Gene ID 25776

Other Names

Protein chibby homolog 1, ARPP-binding protein, Cytosolic leucine-rich protein, PIGEA-14, PKD2 interactor, Golgi and endoplasmic reticulum-associated 1, CBY1, ARB1, C22orf2, CBY, PGEA1

Target/Specificity

CBY1 (NP_056188, 18 a.a. ~ 126 a.a) partial recombinant protein with GST tag. MW of the GST tag alone is 26 KDa.

Dilution

WB~~1:500~1000

Format

Clear, colorless solution in phosphate buffered saline, pH 7.2 .

Storage

Store at -20°C or lower. Aliquot to avoid repeated freezing and thawing.

Precautions

PGEA1 Antibody (monoclonal) (M06) is for research use only and not for use in diagnostic or therapeutic procedures.

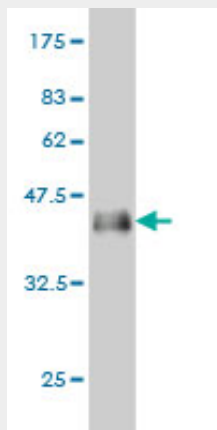
PGEA1 Antibody (monoclonal) (M06) - Protocols

Provided below are standard protocols that you may find useful for product applications.

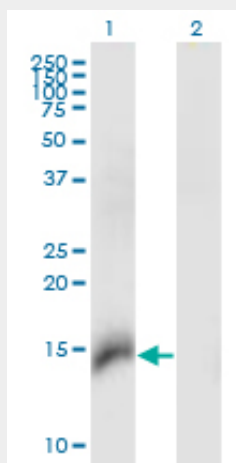
- [Western Blot](#)
- [Blocking Peptides](#)
- [Dot Blot](#)

- [Immunohistochemistry](#)
- [Immunofluorescence](#)
- [Immunoprecipitation](#)
- [Flow Cytometry](#)
- [Cell Culture](#)

PGEA1 Antibody (monoclonal) (M06) - Images



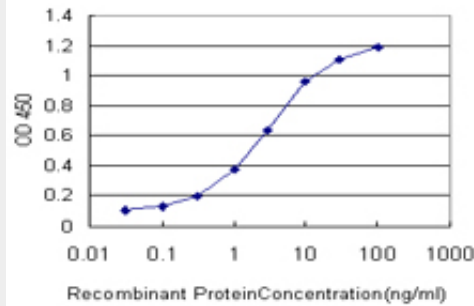
Antibody Reactive Against Recombinant Protein. Western Blot detection against Immunogen (37.73 KDa) .



Western Blot analysis of CBY1 expression in transfected 293T cell line by CBY1 monoclonal antibody (M06), clone 2F2.

Lane 1: CBY1 transfected lysate (Predicted MW: 14.5 KDa).

Lane 2: Non-transfected lysate.



Detection limit for recombinant GST tagged CBY1 is approximately 0.1ng/ml as a capture antibody.

PGEA1 Antibody (monoclonal) (M06) - Background

Beta-catenin is a transcriptional activator and oncoprotein involved in the development of several cancers. The protein encoded by this gene interacts directly with the C-terminal region of beta-catenin, inhibiting oncogenic beta-catenin-mediated transcriptional activation by competing with transcription factors for binding to beta-catenin. Two transcript variants encoding different isoforms have been found for this gene.

PGEA1 Antibody (monoclonal) (M06) - References

Chibby interacts with NBPF1 and clusterin, two candidate tumor suppressors linked to neuroblastoma. Vandepoele K, et al. *Exp Cell Res*, 2010 Apr 15. PMID 20096688. Nuclear-cytoplasmic shuttling of Chibby controls beta-catenin signaling. Li FQ, et al. *Mol Biol Cell*, 2010 Jan 15. PMID 19940019. Racial disparity in pathophysiologic pathways of preterm birth based on genetic variants. Menon R, et al. *Reprod Biol Endocrinol*, 2009 Jun 15. PMID 19527514. Chibby forms a homodimer through a heptad repeat of leucine residues in its C-terminal coiled-coil motif. Mofunanya A, et al. *BMC Mol Biol*, 2009 May 12. PMID 19435523. Spontaneous preterm birth in African Americans is associated with infection and inflammatory response gene variants. Velez DR, et al. *Am J Obstet Gynecol*, 2009 Feb. PMID 19019335.