

PDLIM1 Antibody (monoclonal) (M02)

Mouse monoclonal antibody raised against a partial recombinant PDLIM1.

Catalog # AT3262a

Specification

PDLIM1 Antibody (monoclonal) (M02) - Product Information

Application	WB, IHC, E
Primary Accession	O00151
Other Accession	NM_020992
Reactivity	Human
Host	mouse
Clonality	Monoclonal
Isotype	IgG2a Kappa
Calculated MW	36072

PDLIM1 Antibody (monoclonal) (M02) - Additional Information

Gene ID 9124

Other Names

PDZ and LIM domain protein 1, C-terminal LIM domain protein 1, Elfin, LIM domain protein CLP-36, PDLIM1, CLIM1, CLP36

Target/Specificity

PDLIM1 (NP_066272, 123 a.a. ~ 232 a.a) partial recombinant protein with GST tag. MW of the GST tag alone is 26 KDa.

Dilution

WB~~1:500~1000

Format

Clear, colorless solution in phosphate buffered saline, pH 7.2 .

Storage

Store at -20°C or lower. Aliquot to avoid repeated freezing and thawing.

Precautions

PDLIM1 Antibody (monoclonal) (M02) is for research use only and not for use in diagnostic or therapeutic procedures.

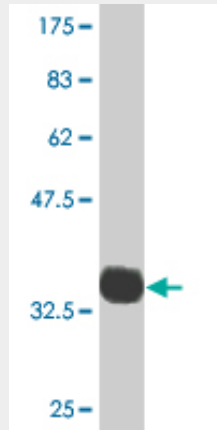
PDLIM1 Antibody (monoclonal) (M02) - Protocols

Provided below are standard protocols that you may find useful for product applications.

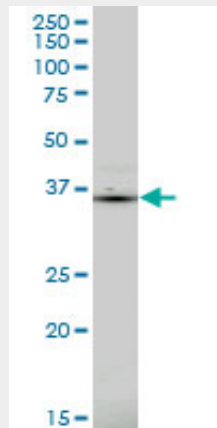
- [Western Blot](#)
- [Blocking Peptides](#)
- [Dot Blot](#)

- [Immunohistochemistry](#)
- [Immunofluorescence](#)
- [Immunoprecipitation](#)
- [Flow Cytometry](#)
- [Cell Culture](#)

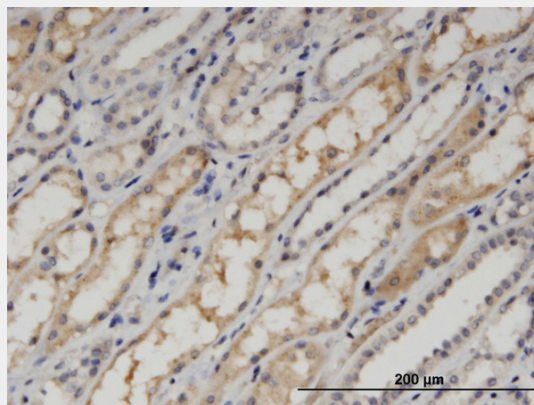
PDLIM1 Antibody (monoclonal) (M02) - Images



Antibody Reactive Against Recombinant Protein. Western Blot detection against Immunogen (37.84 kDa) .

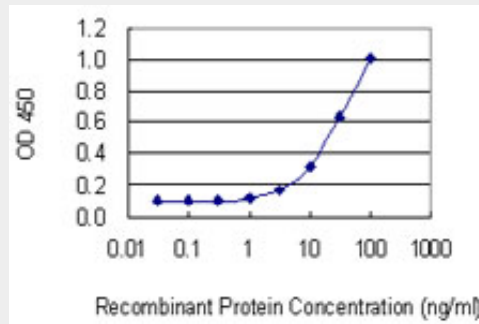


PDLIM1 monoclonal antibody (M02), clone 2D4. Western Blot analysis of PDLIM1 expression in Jurkat ((Cat # AT3262a)



Immunoperoxidase of monoclonal antibody to PDLIM1 on formalin-fixed paraffin-embedded

human kidney. [antibody concentration 5 ug/ml]



Detection limit for recombinant GST tagged PDLIM1 is 1 ng/ml as a capture antibody.

PDLIM1 Antibody (monoclonal) (M02) - References

Transcriptomic and genetic studies identify IL-33 as a candidate gene for Alzheimer's disease. Chapuis J, et al. Mol Psychiatry, 2009 Nov. PMID 19204726. Regulation of estrogen-dependent transcription by the LIM cofactors CLIM and RLIM in breast cancer. Johnsen SA, et al. Cancer Res, 2009 Jan 1. PMID 19117995. Refined genomic localization and ethnic differences observed for the IBD5 association with Crohn's disease. Silverberg MS, et al. Eur J Hum Genet, 2007 Mar. PMID 17213842. Expression of the actin stress fiber-associated protein CLP36 in the human placenta. Miede U, et al. Histochem Cell Biol, 2006 Oct. PMID 16609848. A scan of chromosome 10 identifies a novel locus showing strong association with late-onset Alzheimer disease. Grupe A, et al. Am J Hum Genet, 2006 Jan. PMID 16385451.