

**PCDHA12 Antibody (monoclonal) (M02)**

Mouse monoclonal antibody raised against a partial recombinant PCDHA12.

Catalog # AT3218a

**Specification**

---

**PCDHA12 Antibody (monoclonal) (M02) - Product Information**

Application	E
Primary Accession	<a href="#">O9UN75</a>
Other Accession	<a href="#">NM_018903</a>
Reactivity	Human
Host	mouse
Clonality	Monoclonal
Isotype	IgG2b Kappa
Calculated MW	101652

**PCDHA12 Antibody (monoclonal) (M02) - Additional Information**

Gene ID 56137

**Other Names**

Protocadherin alpha-12, PCDH-alpha-12, PCDHA12

**Target/Specificity**

PCDHA12 (NP\_061726, 222 a.a. ~ 327 a.a) partial recombinant protein with GST tag. MW of the GST tag alone is 26 KDa.

**Format**

Clear, colorless solution in phosphate buffered saline, pH 7.2 .

**Storage**

Store at -20°C or lower. Aliquot to avoid repeated freezing and thawing.

**Precautions**

PCDHA12 Antibody (monoclonal) (M02) is for research use only and not for use in diagnostic or therapeutic procedures.

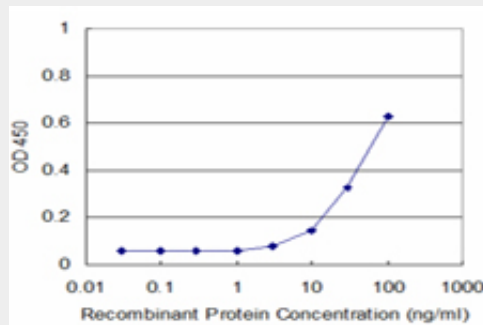
**PCDHA12 Antibody (monoclonal) (M02) - Protocols**

Provided below are standard protocols that you may find useful for product applications.

- [Western Blot](#)
- [Blocking Peptides](#)
- [Dot Blot](#)
- [Immunohistochemistry](#)
- [Immunofluorescence](#)
- [Immunoprecipitation](#)
- [Flow Cytometry](#)

- [Cell Culture](#)

### PCDHA12 Antibody (monoclonal) (M02) - Images



Detection limit for recombinant GST tagged PCDHA12 is approximately 3ng/ml as a capture antibody.

### PCDHA12 Antibody (monoclonal) (M02) - Background

This gene is a member of the protocadherin alpha gene cluster, one of three related gene clusters tandemly linked on chromosome five that demonstrate an unusual genomic organization similar to that of B-cell and T-cell receptor gene clusters. The alpha gene cluster is composed of 15 cadherin superfamily genes related to the mouse CNR genes and consists of 13 highly similar and 2 more distantly related coding sequences. The tandem array of 15 N-terminal exons, or variable exons, are followed by downstream C-terminal exons, or constant exons, which are shared by all genes in the cluster. The large, uninterrupted N-terminal exons each encode six cadherin ectodomains while the C-terminal exons encode the cytoplasmic domain. These neural cadherin-like cell adhesion proteins are integral plasma membrane proteins that most likely play a critical role in the establishment and function of specific cell-cell connections in the brain. Alternative splicing has been observed and additional variants have been suggested but their full-length nature has yet to be determined.

### PCDHA12 Antibody (monoclonal) (M02) - References

Systematic identification of SH3 domain-mediated human protein-protein interactions by peptide array target screening. Wu C, et al. *Proteomics*, 2007 Jun. PMID 17474147. Signal sequence and keyword trap in silico for selection of full-length human cDNAs encoding secretion or membrane proteins from oligo-capped cDNA libraries. Otsuki T, et al. *DNA Res*, 2005. PMID 16303743. The DNA sequence and comparative analysis of human chromosome 5. Schmutz J, et al. *Nature*, 2004 Sep 16. PMID 15372022. Generation and initial analysis of more than 15,000 full-length human and mouse cDNA sequences. Strausberg RL, et al. *Proc Natl Acad Sci U S A*, 2002 Dec 24. PMID 12477932. Comparative DNA sequence analysis of mouse and human protocadherin gene clusters. Wu Q, et al. *Genome Res*, 2001 Mar. PMID 11230163.