

## **PBX1 Antibody (monoclonal) (M01)**

Mouse monoclonal antibody raised against a partial recombinant PBX1.

Catalog # AT3200a

### **Specification**

---

#### **PBX1 Antibody (monoclonal) (M01) - Product Information**

Application	IF, WB, IHC, E
Primary Accession	<a href="#">P40424</a>
Other Accession	<a href="#">NM_002585</a>
Reactivity	Human
Host	mouse
Clonality	Monoclonal
Isotype	IgG2a Kappa
Calculated MW	46626

#### **PBX1 Antibody (monoclonal) (M01) - Additional Information**

**Gene ID** 5087

#### **Other Names**

Pre-B-cell leukemia transcription factor 1, Homeobox protein PBX1, Homeobox protein PRL, PBX1, PRL

#### **Target/Specificity**

PBX1 (NP\_002576, 213 a.a. ~ 321 a.a) partial recombinant protein with GST tag. MW of the GST tag alone is 26 KDa.

#### **Dilution**

WB~~1:500~1000

#### **Format**

Clear, colorless solution in phosphate buffered saline, pH 7.2 .

#### **Storage**

Store at -20°C or lower. Aliquot to avoid repeated freezing and thawing.

#### **Precautions**

PBX1 Antibody (monoclonal) (M01) is for research use only and not for use in diagnostic or therapeutic procedures.

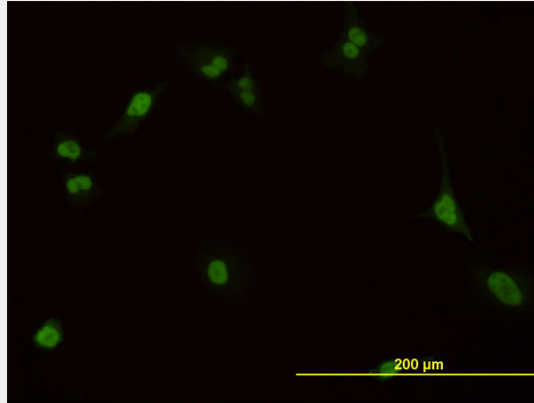
#### **PBX1 Antibody (monoclonal) (M01) - Protocols**

Provided below are standard protocols that you may find useful for product applications.

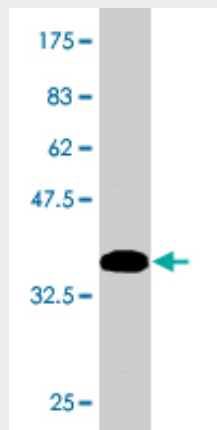
- [Western Blot](#)
- [Blocking Peptides](#)
- [Dot Blot](#)

- [Immunohistochemistry](#)
- [Immunofluorescence](#)
- [Immunoprecipitation](#)
- [Flow Cytometry](#)
- [Cell Culture](#)

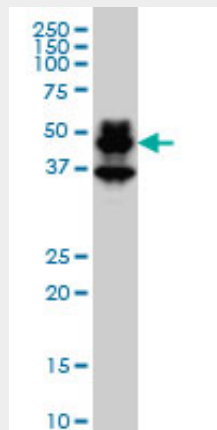
### PBX1 Antibody (monoclonal) (M01) - Images



Immunofluorescence of monoclonal antibody to PBX1 on HeLa cell. [antibody concentration 10 ug/ml]

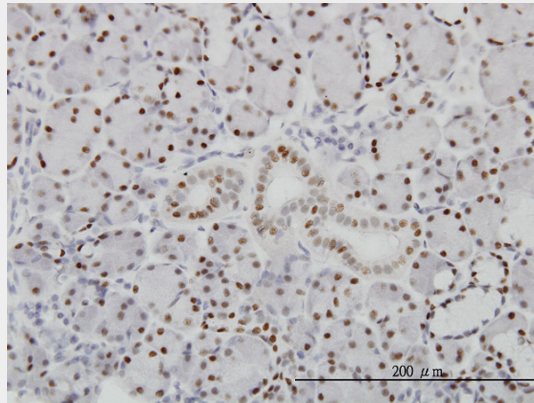


Antibody Reactive Against Recombinant Protein. Western Blot detection against Immunogen (37.73 KDa) .

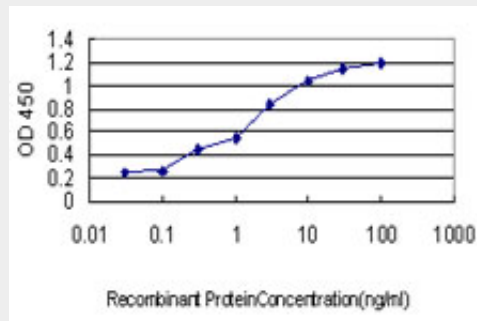


PBX1 monoclonal antibody (M01), clone 4A2 Western Blot analysis of PBX1 expression in HeLa S3

NE ( (Cat # AT3200a )



Immunoperoxidase of monoclonal antibody to PBX1 on formalin-fixed paraffin-embedded human salivary gland. [antibody concentration 3 ug/ml]



Detection limit for recombinant GST tagged PBX1 is approximately 0.03ng/ml as a capture antibody.

**PBX1 Antibody (monoclonal) (M01) - References**

1.PBX1 Genomic Pioneer Function Drives ER alpha Signaling Underlying Progression in Breast Cancer.Magnani L, Ballantyne EB, Zhang X, Lupien M.PLoS Genet. 2011 Nov;7(11):e1002368. Epub 2011 Nov 17.2.Cooperative transcriptional activation by klf4, meis2, and pbx1.Bjerke GA, Hyman-Walsh C, Wotton D.Mol Cell Biol. 2011 Sep;31(18):3723-33. Epub 2011 Jul 11.3.Pre-B-cell leukemia homeobox 1 (PBX1) shows functional and possible genetic association with bone mineral density variation.Cheung CL, Chan BY, Chan V, Ikegawa S, Kou I, Ngai H, Smith D, Luk KD, Huang QY, Mori S, Sham PC, Kung AW.Hum Mol Genet. 2009 Feb 15;18(4):679-87. Epub 2008 Dec 8.