

## **PAX7 Antibody (monoclonal) (M07)**

Mouse monoclonal antibody raised against a partial recombinant PAX7.

Catalog # AT3192a

### **Specification**

---

#### **PAX7 Antibody (monoclonal) (M07) - Product Information**

|                   |                           |
|-------------------|---------------------------|
| Application       | IF, WB, E                 |
| Primary Accession | <a href="#">P23759</a>    |
| Other Accession   | <a href="#">NM_002584</a> |
| Reactivity        | Human                     |
| Host              | mouse                     |
| Clonality         | Monoclonal                |
| Isotype           | IgG2b Kappa               |
| Calculated MW     | 55119                     |

#### **PAX7 Antibody (monoclonal) (M07) - Additional Information**

**Gene ID** 5081

##### **Other Names**

Paired box protein Pax-7, HuP1, PAX7, HUP1

##### **Target/Specificity**

PAX7 (NP\_002575.1, 411 a.a. ~ 520 a.a) partial recombinant protein with GST tag. MW of the GST tag alone is 26 KDa.

##### **Dilution**

WB~~1:500~1000

##### **Format**

Clear, colorless solution in phosphate buffered saline, pH 7.2 .

##### **Storage**

Store at -20°C or lower. Aliquot to avoid repeated freezing and thawing.

##### **Precautions**

PAX7 Antibody (monoclonal) (M07) is for research use only and not for use in diagnostic or therapeutic procedures.

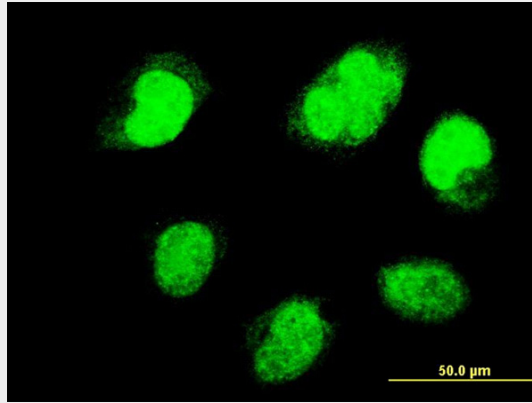
#### **PAX7 Antibody (monoclonal) (M07) - Protocols**

Provided below are standard protocols that you may find useful for product applications.

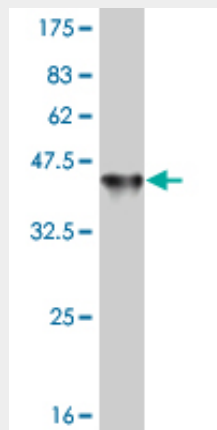
- [Western Blot](#)
- [Blocking Peptides](#)
- [Dot Blot](#)
- [Immunohistochemistry](#)

- [Immunofluorescence](#)
- [Immunoprecipitation](#)
- [Flow Cytometry](#)
- [Cell Culture](#)

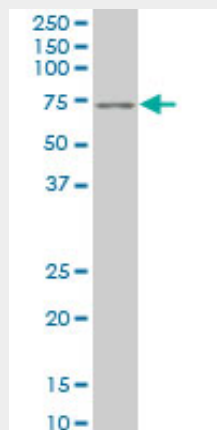
### PAX7 Antibody (monoclonal) (M07) - Images



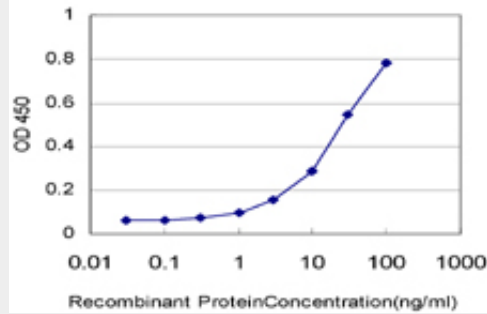
Immunofluorescence of monoclonal antibody to PAX7 on HeLa cell. [antibody concentration 10 ug/ml]



Antibody Reactive Against Recombinant Protein. Western Blot detection against Immunogen (37.84 KDa) .



PAX7 monoclonal antibody (M07), clone 1G11 Western Blot analysis of PAX7 expression in HeLa S3 NE ( (Cat # AT3192a )



Detection limit for recombinant GST tagged PAX7 is approximately 1ng/ml as a capture antibody.

### **PAX7 Antibody (monoclonal) (M07) - Background**

This gene is a member of the paired box (PAX) family of transcription factors. Members of this gene family typically contain a paired box domain, an octapeptide, and a paired-type homeodomain. These genes play critical roles during fetal development and cancer growth. The specific function of the paired box 7 gene is unknown but speculated to involve tumor suppression since fusion of this gene with a forkhead domain family member has been associated with alveolar rhabdomyosarcoma. Three transcript variants encoding different isoforms have been found for this gene.

### **PAX7 Antibody (monoclonal) (M07) - References**

An approach based on a genome-wide association study reveals candidate loci for narcolepsy. Shimada M, et al. Hum Genet, 2010 Oct. PMID 20677014. Fusion gene-negative alveolar rhabdomyosarcoma is clinically and molecularly indistinguishable from embryonal rhabdomyosarcoma. Williamson D, et al. J Clin Oncol, 2010 May 1. PMID 20351326. Genome-wide association study confirms SNPs in SNCA and the MAPT region as common risk factors for Parkinson disease. Edwards TL, et al. Ann Hum Genet, 2010 Mar. PMID 20070850. High-density association study of 383 candidate genes for volumetric BMD at the femoral neck and lumbar spine among older men. Yerges LM, et al. J Bone Miner Res, 2009 Dec. PMID 19453261. Maternal transmission effects of the PAX genes among cleft case-parent trios from four populations. Sull JW, et al. Eur J Hum Genet, 2009 Jun. PMID 19142206.