

PAI-RBP1 Antibody (monoclonal) (M01)

Mouse monoclonal antibody raised against a full length recombinant PAI-RBP1.

Catalog # AT3172a

Specification

PAI-RBP1 Antibody (monoclonal) (M01) - Product Information

Application	IF, WB
Primary Accession	O8NC51
Other Accession	BC002488
Reactivity	Human
Host	Mouse
Clonality	Monoclonal
Isotype	IgG1 kappa
Calculated MW	44965

PAI-RBP1 Antibody (monoclonal) (M01) - Additional Information

Gene ID 26135

Other Names

Plasminogen activator inhibitor 1 RNA-binding protein, PAI1 RNA-binding protein 1, PAI-RBP1, SERPINE1 mRNA-binding protein 1, SERBP1, PAIRBP1

Target/Specificity

PAI-RBP1 (AAH02488, 1 a.a. ~ 402 a.a) full-length recombinant protein with GST tag. MW of the GST tag alone is 26 KDa.

Dilution

WB~~1:500~1000

Format

Clear, colorless solution in phosphate buffered saline, pH 7.2 .

Storage

Store at -20°C or lower. Aliquot to avoid repeated freezing and thawing.

Precautions

PAI-RBP1 Antibody (monoclonal) (M01) is for research use only and not for use in diagnostic or therapeutic procedures.

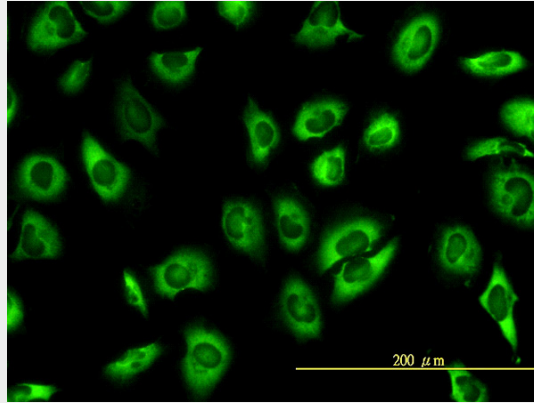
PAI-RBP1 Antibody (monoclonal) (M01) - Protocols

Provided below are standard protocols that you may find useful for product applications.

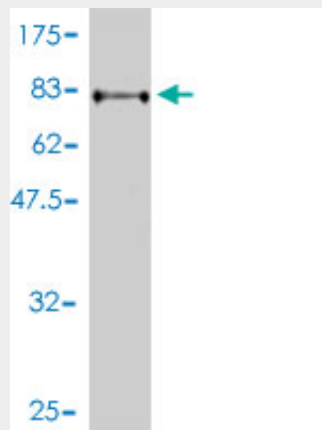
- [Western Blot](#)
- [Blocking Peptides](#)
- [Dot Blot](#)

- [Immunohistochemistry](#)
- [Immunofluorescence](#)
- [Immunoprecipitation](#)
- [Flow Cytometry](#)
- [Cell Culture](#)

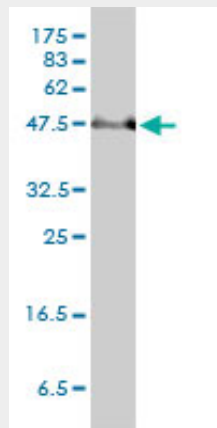
PAI-RBP1 Antibody (monoclonal) (M01) - Images



Immunofluorescence of monoclonal antibody to PAI-RBP1 on HeLa cell. [antibody concentration 10 ug/ml]

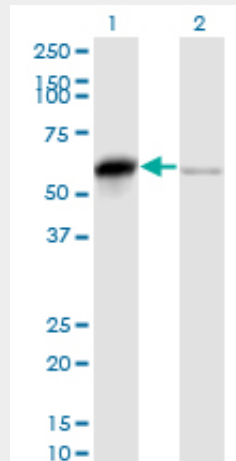


Antibody Reactive Against Recombinant Protein. Western Blot detection against Immunogen (69.96 KDa) .



PAI-RBP1 monoclonal antibody (M01), clone 1D2-2E9 Western Blot analysis of PAI-RBP1

expression in HeLa ((Cat # AT3172a)



Western Blot analysis of SERBP1 expression in transfected 293T cell line by PAI-RBP1 monoclonal antibody (M01), clone 1D2-2E9.

Lane 1: SERBP1 transfected lysate(45 KDa).

Lane 2: Non-transfected lysate.

PAI-RBP1 Antibody (monoclonal) (M01) - References

1. Localization of SERBP1 in stress granules and nucleoli. Lee YJ, Wei HM, Chen LY, Li CF. *FEBS J.* 2013 Nov 8. doi: 10.1111/febs.12606.
2. Protein arginine methylation of SERBP1 by protein arginine methyltransferase 1 affects cytoplasmic/nuclear distribution. Lee YJ, Hsieh WY, Chen LY, Li C. *J Cell Biochem.* 2012 Mar 22. doi: 10.1002/jcb.24151. [Epub ahead of print]
3. Serologic Markers of Effective Tumor Immunity against Chronic Lymphocytic Leukemia Include Nonmutated B-Cell Antigens. Marina O, Hainz U, Biernacki MA, Zhang W, Cai A, Duke-Cohan JS, Liu F, Brusica V, Neuberg D, Kutok JL, Alyea EP, Canning CM, Soiffer RJ, Ritz J, Wu CJ. *Cancer Res.* 2010 Feb 15;70(4):1344-55. Epub 2010 Feb 2.
4. An integrated approach of differential mass spectrometry and gene ontology analysis identified novel proteins regulating neuronal differentiation and survival. Kobayashi D, Kumagai J, Morikawa T, Wilson-Morifuji M, Wilson A, Irie A, Araki N. *Mol Cell Proteomics.* 2009 Oct;8(10):2350-67. Epub 2009 Jun 13.
5. Rapid Changes of mRNA-binding Protein Levels following Glucose and 3-Isobutyl-1-methylxanthine Stimulation of Insulinoma INS-1 Cells. Sus C, Czupalla C, Winter C, Pursche T, Knoch KP, Schroeder M, Hoflack B, Solimena M. *Mol Cell Proteomics.* 2009 Mar;8(3):393-408. Epub 2008 Oct 14.