

## **ORM1 Antibody (monoclonal) (M01)**

Mouse monoclonal antibody raised against a full length recombinant ORM1.

Catalog # AT3156a

### **Specification**

---

#### **ORM1 Antibody (monoclonal) (M01) - Product Information**

Application	IP, WB, IHC, E
Primary Accession	<a href="#">P02763</a>
Other Accession	<a href="#">BC026238</a>
Reactivity	Human
Host	Mouse
Clonality	Monoclonal
Isotype	IgG1 kappa
Calculated MW	23540

#### **ORM1 Antibody (monoclonal) (M01) - Additional Information**

**Gene ID** 5004

##### **Other Names**

Alpha-1-acid glycoprotein 1, AGP 1, Orosomuroid-1, OMD 1, ORM1, AGP1

##### **Target/Specificity**

ORM1 (AAH26238, 18 a.a. ~ 201 a.a) full-length recombinant protein with GST tag. MW of the GST tag alone is 26 KDa.

##### **Dilution**

WB~~1:500~1000

##### **Format**

Clear, colorless solution in phosphate buffered saline, pH 7.2 .

##### **Storage**

Store at -20°C or lower. Aliquot to avoid repeated freezing and thawing.

##### **Precautions**

ORM1 Antibody (monoclonal) (M01) is for research use only and not for use in diagnostic or therapeutic procedures.

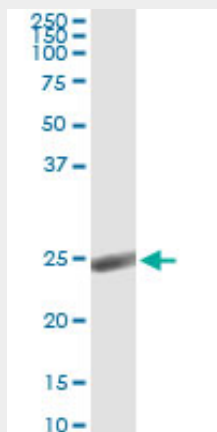
#### **ORM1 Antibody (monoclonal) (M01) - Protocols**

Provided below are standard protocols that you may find useful for product applications.

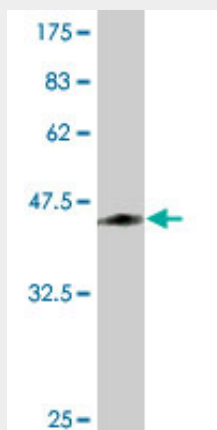
- [Western Blot](#)
- [Blocking Peptides](#)
- [Dot Blot](#)
- [Immunohistochemistry](#)

- [Immunofluorescence](#)
- [Immunoprecipitation](#)
- [Flow Cytometry](#)
- [Cell Culture](#)

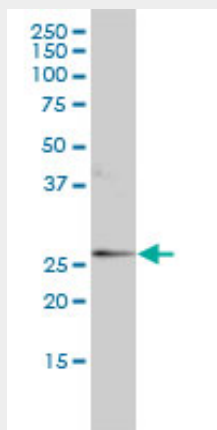
### ORM1 Antibody (monoclonal) (M01) - Images



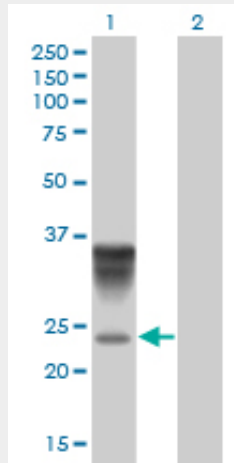
Immunoprecipitation of ORM1 transfected lysate using anti-ORM1 monoclonal antibody and Protein A Magnetic Bead ([U0007](#)), and immunoblotted with ORM1 MaxPab rabbit polyclonal antibody.



Antibody Reactive Against Recombinant Protein. Western Blot detection against Immunogen (45.98 KDa) .

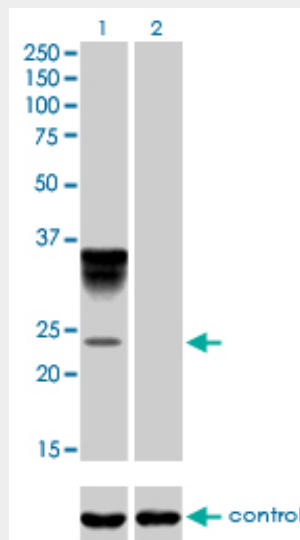


ORM1 monoclonal antibody (M01), clone 2F9-1F10 Western Blot analysis of ORM1 expression in MCF-7 ( (Cat # AT3156a )

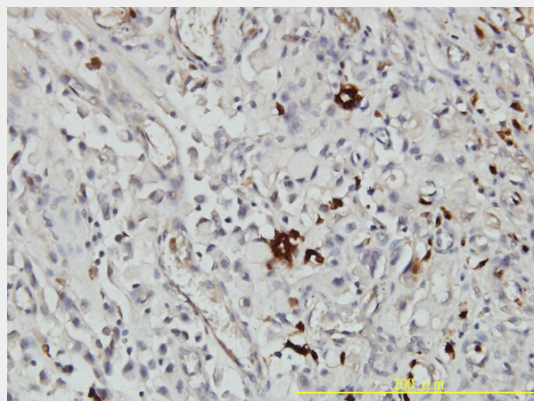


Western Blot analysis of ORM1 expression in transfected 293T cell line by ORM1 monoclonal antibody (M01), clone 2F9-1F10.

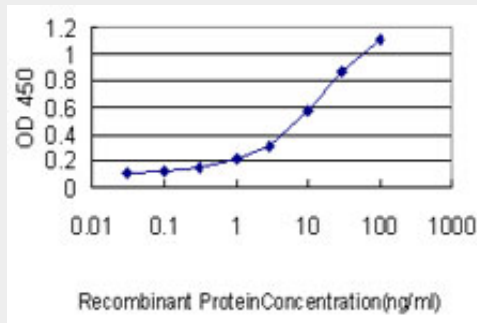
Lane 1: ORM1 transfected lysate(23.5 KDa).  
Lane 2: Non-transfected lysate.



Western blot analysis of ORM1 over-expressed 293 cell line, cotransfected with ORM1 Validated Chimera RNAi ( (Cat # AT3156a )



Immunoperoxidase of monoclonal antibody to ORM1 on formalin-fixed paraffin-embedded human stomach carcinoma tissue. [antibody concentration 1 ug/ml]



Detection limit for recombinant GST tagged ORM1 is approximately 0.1ng/ml as a capture antibody.

### **ORM1 Antibody (monoclonal) (M01) - Background**

This gene encodes a key acute phase plasma protein. Because of its increase due to acute inflammation, this protein is classified as an acute-phase reactant. The specific function of this protein has not yet been determined; however, it may be involved in aspects of immunosuppression.

### **ORM1 Antibody (monoclonal) (M01) - References**

1. A serum protein profile predictive of the resistance to neoadjuvant chemotherapy in advanced breast cancers. Hyung SW, Lee MY, Yu JH, Shin B, Jung HJ, Park JM, Han W, Lee KM, Moon HG, Zhang H, Abersold R, Hwang D, Lee SW, Yu MH, Noh DY. *Mol Cell Proteomics*. 2011 Jul 28. [Epub ahead of print]