

OBFC1 Antibody (monoclonal) (M01)

Mouse monoclonal antibody raised against a full length recombinant OBFC1.

Catalog # AT3142a

Specification

OBFC1 Antibody (monoclonal) (M01) - Product Information

Application	WB
Primary Accession	O9H668
Other Accession	BC017400
Reactivity	Human
Host	mouse
Clonality	Monoclonal
Isotype	IgG2a kappa
Calculated MW	42119

OBFC1 Antibody (monoclonal) (M01) - Additional Information

Gene ID 79991

Other Names

CST complex subunit STN1, Oligonucleotide/oligosaccharide-binding fold-containing protein 1, Suppressor of cdc thirteen homolog, OBFC1, STN1

Target/Specificity

OBFC1 (AAH17400, 1 a.a. ~ 368 a.a) full-length recombinant protein with GST tag. MW of the GST tag alone is 26 KDa.

Dilution

WB~~1:500~1000

Format

Clear, colorless solution in phosphate buffered saline, pH 7.2 .

Storage

Store at -20°C or lower. Aliquot to avoid repeated freezing and thawing.

Precautions

OBFC1 Antibody (monoclonal) (M01) is for research use only and not for use in diagnostic or therapeutic procedures.

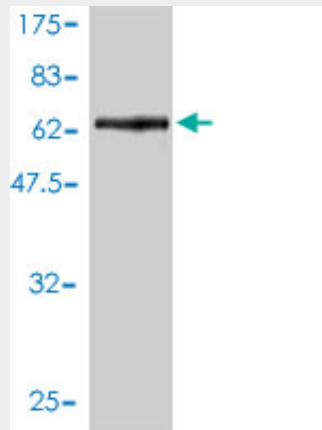
OBFC1 Antibody (monoclonal) (M01) - Protocols

Provided below are standard protocols that you may find useful for product applications.

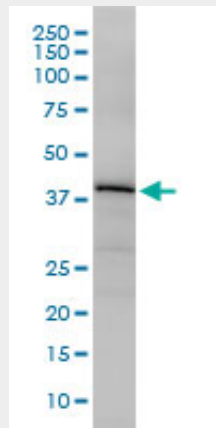
- [Western Blot](#)
- [Blocking Peptides](#)
- [Dot Blot](#)

- [Immunohistochemistry](#)
- [Immunofluorescence](#)
- [Immunoprecipitation](#)
- [Flow Cytometry](#)
- [Cell Culture](#)

OBFC1 Antibody (monoclonal) (M01) - Images



Antibody Reactive Against Recombinant Protein. Western Blot detection against Immunogen (66.22 KDa) .



OBFC1 monoclonal antibody (M01), clone 3G12-1B7 Western Blot analysis of OBFC1 expression in Jurkat (Cat # AT3142a)

OBFC1 Antibody (monoclonal) (M01) - Background

OBFC1 and C17ORF68 (MIM 613129) are subunits of an alpha accessory factor (AAF) that stimulates the activity of DNA polymerase-alpha-primase (see MIM 176636), the enzyme that initiates DNA replication (Casteel et al., 2009 [PubMed 19119139]). OBFC1 also appears to function in a telomere-associated complex with C17ORF68 and TEN1 (C17ORF106; MIM 613130) (Miyake et al., 2009 [PubMed 19854130]).

OBFC1 Antibody (monoclonal) (M01) - References

1. OB Fold-containing Protein 1 (OBFC1), a Human Homolog of Yeast Stn1, Associates with TPP1 and Is Implicated in Telomere Length Regulation. Wan M, Qin J, Songyang Z, Liu D. J Biol Chem. 2009 Sep 25;284(39):26725-31. Epub 2009 Aug 1.