

## **NUP62 Antibody (monoclonal) (M01)**

Mouse monoclonal antibody raised against a full length recombinant NUP62.

Catalog # AT3137a

### **Specification**

---

#### **NUP62 Antibody (monoclonal) (M01) - Product Information**

Application	WB, E
Primary Accession	<a href="#">P37198</a>
Other Accession	<a href="#">BC050717</a>
Reactivity	Human
Host	mouse
Clonality	Monoclonal
Isotype	IgG1 kappa
Calculated MW	53255

#### **NUP62 Antibody (monoclonal) (M01) - Additional Information**

**Gene ID** 23636

##### **Other Names**

Nuclear pore glycoprotein p62, 62 kDa nucleoporin, Nucleoporin Nup62, NUP62

##### **Target/Specificity**

NUP62 (AAH50717, 1 a.a. ~ 522 a.a) full-length recombinant protein with GST tag. MW of the GST tag alone is 26 KDa.

##### **Dilution**

WB ~ ~ 1:500 ~ 1000

##### **Format**

Clear, colorless solution in phosphate buffered saline, pH 7.2 .

##### **Storage**

Store at -20°C or lower. Aliquot to avoid repeated freezing and thawing.

##### **Precautions**

NUP62 Antibody (monoclonal) (M01) is for research use only and not for use in diagnostic or therapeutic procedures.

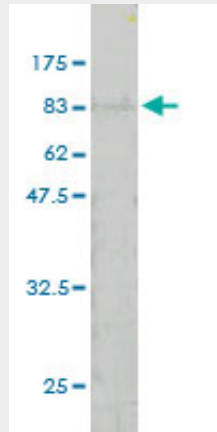
#### **NUP62 Antibody (monoclonal) (M01) - Protocols**

Provided below are standard protocols that you may find useful for product applications.

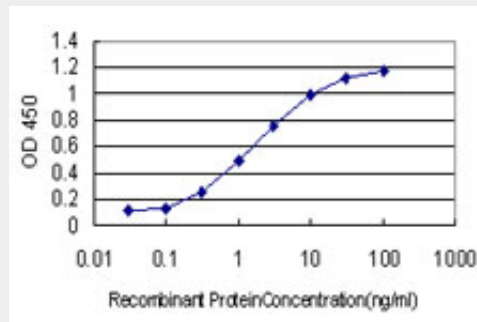
- [Western Blot](#)
- [Blocking Peptides](#)
- [Dot Blot](#)
- [Immunohistochemistry](#)

- [Immunofluorescence](#)
- [Immunoprecipitation](#)
- [Flow Cytometry](#)
- [Cell Culture](#)

### **NUP62 Antibody (monoclonal) (M01) - Images**



Antibody Reactive Against Recombinant Protein. Western Blot detection against Immunogen (82.94 KDa) .



Detection limit for recombinant GST tagged NUP62 is approximately 0.1ng/ml as a capture antibody.

### **NUP62 Antibody (monoclonal) (M01) - Background**

The nuclear pore complex is a massive structure that extends across the nuclear envelope, forming a gateway that regulates the flow of macromolecules between the nucleus and the cytoplasm. Nucleoporins are the main components of the nuclear pore complex in eukaryotic cells. The protein encoded by this gene is a member of the FG-repeat containing nucleoporins and is localized to the nuclear pore central plug. This protein associates with the importin alpha/beta complex which is involved in the import of proteins containing nuclear localization signals. Multiple transcript variants of this gene encode a single protein isoform.

### **NUP62 Antibody (monoclonal) (M01) - References**

Oxidative stress inhibits nuclear protein export by multiple mechanisms that target FG nucleoporins and Crm1. Crampton N, et al. *Mol Biol Cell*, 2009 Dec. PMID 19828735. Defining the human deubiquitinating enzyme interaction landscape. Sowa ME, et al. *Cell*, 2009 Jul 23. PMID 19615732. Mengovirus-induced rearrangement of the nuclear pore complex: hijacking cellular phosphorylation machinery. Bardina MV, et al. *J Virol*, 2009 Apr. PMID 19144712. Nucleophosmin serves as a rate-limiting nuclear export chaperone for the Mammalian ribosome. Maggi LB Jr, et al. *Mol Cell Biol*, 2008 Dec. PMID 18809582. Toward a confocal subcellular atlas of the human

proteome. Barbe L, et al. Mol Cell Proteomics, 2008 Mar. PMID 18029348.